



PRE-KINDERGARTEN KIDDIES came in all sizes at the Saturday Easter Egg Hunt at the high school football field. In

the foreground one large and eager participant has a less anxious little sister in tow. At the signal they were off and running.



THIRTY SECONDS LATER the field was stripped bare of its store of brightly colored eggs. While some of the youngsters looked relieved that the fray was over, others were dissatisfied

with the haul and kept scouring the green for a hint of colored shell.

## WEATHER

	Max.	Min.	Precip.
Wednesday, April 18	59	63	Trace
Thursday, April 19	59	78	Trace
Friday, April 20	53	78	Trace
Saturday, April 21	61	75	0.00
Sunday, April 22	63	69	0.02
Monday, April 23	58	65	0.00
Tuesday, April 24	58	57	0.00

By H.K.L.

# The Chelsea Standard

ONE HUNDRED-THIRD YEAR—No. 45

14 Pages This Week

CHELSEA, MICHIGAN, THURSDAY, APRIL 26, 1973

15c per copy

SUBSCRIPTION: \$4.00 PER YEAR

## 'Trashathon' Planned By Youth Group

The Junior High Fellowship of St. Paul United Church of Christ will be doing its part in the crusade against litter this Saturday by sponsoring a "Trash-a-Thon." They hope to be joined by all the youth of the community as they further the cause of ecology while beautifying the village and its outskirts.

For the past two weeks the junior high-aged youngsters have been canvassing the community seeking sponsors to back them. They are asking to be paid per pound of litter they pick up along the roads. All the money thus collected will go to a children's charity such as Spaulding for Children or UNICEF.

From 10 a.m. until 4 p.m. each youth will collect as much trash as he can with the assistance of an adult and a pick-up truck. The collectors will return periodically to the upper parking lot at St. Paul's where their booty will be weighed and credited to their account.

At 4 p.m. the participants will take certified statements of the total weight they collected to their sponsors to collect their due.

Lunch will be served for all workers outside in the church parking lot. If it rains, the meal will be served inside the church but the collection of trash will go on.

Interested adults who would like to assist with trucks, lunch, weighing or bookkeeping are invited to call John or Bev Yelsik at 475-2369 before Saturday, or helpers may just come to the church at 10 a.m. Saturday.

## Underground Phone Cable Being Installed

Those excavations seen along Chelsea-Dexter Rd. this week are preparations for the future. Michigan Bell is laying a new inter-office trunk cable in anticipation of expanded telephone traffic between Chelsea, Dexter and Ann Arbor in the years to come.

This new line will triple the communication capacity that now exists between those points.

The cable, like all Michigan Bell lines from here out, will be completely underground and will not affect the subscriber's cable that (Continued on page six)

## District Baseball Tournament Set for Chelsea

Dick Lapanowski, athletic director at the high school, reports that Chelsea will be the backdrop for some pretty fine baseball, come June, when the Districts are played on the high school field.

Of the 11 schools, Albion, Brooklyn Columbia Central, Chelsea, Dexter, Hillsdale, Jackson Lymen Christi, Jackson Northwest, Michigan Center, Parma Western, Pinckney, and Tecumseh, only four will make to the June 2 playoffs.

It will be quite some day for high school baseball fans.

## Varsity Tennis Competition Underway

Chelsea's second year of varsity tennis competition will get into full swing today and in the week to come with a schedule of four matches.

Today, (Thursday), the netters will face Stockbridge; next week the matches bounce from Howell on Monday, to Ann Arbor Huron Reserves on Tuesday, to Novi on Thursday. Because Chelsea High remains without an adequate number (Continued on page three)

## Rent-A-Kid Service Starts At Equinox

If the signs of spring, the unkempt garden, the dirty garage, make you dread the sunny days that demand spring chores be done, you can find solace at Chelsea's "Equinox."

The teen center is acting as a clearing house where those looking for odd-job help can find an able-bodied work force. The teens will do most anything from babysitting, to bike repairing, to being box boys. They are willing to run errands, clean that dirty garage or prepare that garden for summer's riches. Anything from housework to lawn work is in their line. Tutoring and sales work would also suit them fine.

This service, called "Rent-A-Kid," is available now at Equinox, at 475-1580. You can make the spring and summer seasons productive for both yourself and the teens by hiring them.

## Bulldog Nine Romps Over Manchester

Varsity baseball coach Carl Genske watched a more relaxed and confident Bulldog ball club get on top of the game, Monday afternoon. The 8-5 victory over Manchester was a sight for sore eyes.

"We played much better ball," said the coach. "The errors we made (there were four) didn't hurt us as much as before. Still we've got to cut that out."

Doug Reed's improved pitching was a major factor in the team's rejuvenated style. "I knew he could do it if he got the chance," said Genske. Manchester got only eight hits off the Bulldog pitcher who remained on the mound for the entire game.

Three of the Flying Dutchmen runs came in the third inning, one more each in the fourth and the fifth. Manchester made one error. Chelsea started hot. After one ground out, the Bulldogs made contact for four straight hits, which were climaxed with Jeff Daniels' double.

The action started when John Houle hit a double which was followed by Mark Nadeau's single. Another single by Craig Alter put him and Nadeau in position to score on Daniels' double. Houle had come in before on a single.

After a no-run second inning, Chelsea was again on target in the third. Houle started the build-up with a single. He stole second and then third. After Mike Nadeau walked and stole second, Craig Alter walked, too, loading the bases. Jeff Daniels' single brought Houle home. (Continued on page six)

## Errors Defeat Bulldog Nine At Dundee, 2-1

"We're beating ourselves," said a frustrated coach after Tuesday's 2-1 bomb at Dundee. "We had men in scoring positions, but mental errors did it. We're just not thinking."

Coach Carl Genske has no doubts about the ability of his men, but they are green. Only three are veterans. "Next year, we'll be great," he says wryly, noting that only two of his starters are seniors.

For the present, the coach is stressing that the team must learn (Continued on page eight)



BREEZING ON IN: Bruce Guster makes it look easy as he took first place in the 110 against Dexter. As Bruce snapped the tape, the clock registered a time of :52.5. His Dexter opponent was

at least 50 yards behind. This win, plus Guster's prodigious leap in the long jump (21'2 1/4"), contributed to Chelsea's 76-47 victory.



WITH GRACE AND POWER Craig Coltre drove for the finish, leaping far ahead of his Dexter rival, covering the 180-yards peppered with low

hurdles. Bill Tite, the third-place winner in the event during Monday's home meet, came in a second later with a time of :23.2.

## Track Team Rolls on Over Dexter, 76-47

Chelsea High school track team won its third straight conference dual meet, Monday, by downing Dexter, 76-47. Dexter had been undefeated until it ventured onto the Bulldog track.

Again the winning pack was led by double victories by Bruce Guster and Karl Gauss. Both Guster, winning the long jump and the 440-yard dash, and Gauss, taking the 100- and 220-yard dashes, ran the winning 800-yard relay team. Guster's leap of 21'2 1/4" in the long jump was the outstanding effort of the meet, according to Coach Bert Kruse.

The coach thought the meet went "close to form," although there were disappointments like losing the mile and 440 relays. "We have to improve in these areas before some of the big meets coming up," said Kruse.

Chelsea swept the shot put event for the first time this season. Ishmael Picklesimer, as usual, won the event with a 41'5 1/2" heave. Steve Worden was second with 37'6", and Rex Miles was third with 36'5 1/2".

First and seconds were taken by Chelsea in the long jump, the pole vault and the 880-yard run. Bruce Guster's amazing leap in the long jump was the most closely rivaled by teammate Craig Coltre's 19'1 1/2" try.

Tim Lancaster was over 12'6" before he was stopped in the pole vault. Second place was Don Pierson's 12 foot vault.

## Seven Qualify For Regionals In Forensics

A handful of Chelsea's forensics competitors performed their way through the Districts at Ypsilanti, April 17, and qualified for the Regional competition at the University of Michigan, May 2.

According to Coach William Coelius, Chelsea competes in an exception which little Chelsea must come up against the likes of Ann Arbor's Huron, Pioneer and Greenhills High schools. Saline, Lincoln, and Ypsilanti were also there to add to the competition.

Nevertheless, Chelsea swept the declamation category, taking first and second places with deliveries by Cindy Turcott and Brad Glazier. Cindy was the first-place winner.

Other contestants who will go to the Regionals are Michelle McClellan for her second in Women's Extemporaneous and four members of one of Chelsea's multiple groups, "Babes in a Video Tape Wood." They are John Mann, Jeff Daniels, Lee Ferguson, and Tom Skittenhelm.

Mike Nadeau's radio broadcast and Tim Johnson's humorous reading earned third place which rate only honorable mention. They will not be competing further. Dave Klemer was also in that group with a third in Men's Extemporaneous.

Last year only two Chelsea students got to the regional bout, but then they went all the way to the state competition. Says the coach, coming from such a strong region, Chelsea's contestants have reason to hope they can get all the way to the state level once again.

Jeff Van Riper with a time of 2:14.2 was just behind Jeff Marshall's first in the 880-yard run. Marshall's winning time was 2:11.5. Once again Chelsea's 880 relay team brought home the first with a time of 1:36.7. Running were Howard Salyer, Craig Coltre, Karl Gauss and Bruce Guster. That was the only relay the Bulldogs snatched from Dexter.

Rick Sweeney overcame all competition in the high jump with a 5'10 1/2" accomplishment. Bill Tite was third with a 5'8" jump. Tite was also seen taking the first-place award for a time of :17.1 in the 120-yard high hurdles. He took a third in the 180-yard low hurdles behind Craig Coltre who won the event with a time of :22.2.

In the long distances, Chelsea's John Beeman was second with 4:56.6 in the mile run, and John Storey was second with 11:08.7 in the two-mile stretch.

The Albion Relays which will be staged this Saturday, will provide ample test for Chelsea's winning streak.



## First Euriskon Service Slated Sunday Night

The first session of Euriskon, an evangelistic program the United Methodist church is staging this week, begins at 7:30 Sunday evening. The program will be led by the Rev. Robert Brubaker of Adrian who has been specially trained in Euriskon techniques.

The program, which will be held on five successive evenings, proposes to be both "Christ-oriented" and "reality oriented," as it focuses on trust, adaptability, responsibility, and the "centrality of Christ."

"No old-time pressure tactics" will be applied, according to a church spokesman, and everyone is free to attend whether or not they are church members.

The leader of the gatherings, the Rev. Robert C. Brubaker is currently pastor of the First United Methodist church of Adrian where he has served since 1969. His (Continued on page eight)

## Pre-Kindergarten Children Invited To Visit Classes

Children who will be five years old by Dec. 1, and who will be entering kindergarten in the Chelsea School District are invited to come to the Kindergarten Center at 400 Congdon St. between April 30 and May 18 for a brief peek at what they're getting into.

During the specified two and one-half weeks, visits will be allowed from 8:30 to 9:30 every morning, and between 12:30 and 1:30 every afternoon. Parents are requested to stay with their children since the teachers will be conducting their regular teaching programs.

For further information or for appointments with the kindergarten teachers, call 475-8774.

## FFA 'Slave Auction' Slated Next Tuesday

Although slave labor is considered anachronistic in some circles, it can come in handy occasionally. At least that is what the FFA is counting on.

FFA members will be auctioned off at the annual slave sale, May 1, at 8 p.m., in the agricultural room at the high school. Their bondage to the buyer is good for one eight-hour work day.

## Gordon J. Beeman Awarded Army Commendation Medal

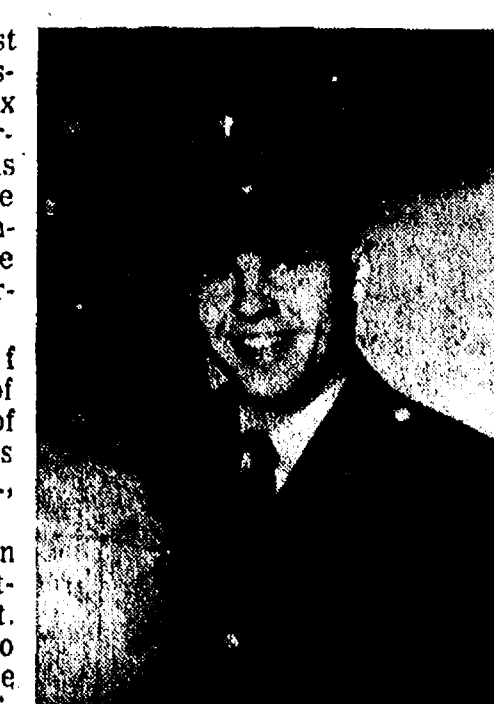
Gordon J. Beeman learned last week that although he was discharged from the army almost six months ago, the army had not forgotten his fine service. He was notified through the mail that he had been awarded the Army Commendation Medal for duty with the Army Armed Forces Courier Service.

Gordon, a life-long resident of the Chelsea area, is the son of Mr. and Mrs. Wilbur Beeman of Waterloo. He now resides with his wife, Becky, at 16891 Waterloo Rd., Chelsea.

Gordon entered the service in February 1970 and after completing basic and AIT training at Ft. Knox, he was one of five who qualified for assignment at the Pentagon in Washington, D. C. He remained there until his discharge from active duty this past November.

His duty assignment consisted of handling classified material which required a Top Secret security clearance. Gordon was also in charge of men who worked for him, and was called upon to travel extensively overseas and around the U. S.

The citation reads: "The secretary of the Army has awarded the Army Commendation Medal to (Continued on page eight)



GORDON J. BEEMAN

## Duane West Released From Hospital Friday

Duane West, the Chelsea youth who was severely injured in a hit-and-run accident last month, was released from St. Joseph Mercy Hospital, April 20. He is now recovering at home.

The search by sheriff's deputies for a purple van goes on.



EGGS OF A DIFFERENT COLOR were being dyed right and left, April 18, at North school. Here

fifth graders are creating Ukrainian Easter eggs by decorating colorful eggs with ornate designs.



# Uncle Lew from Lima Says:

DEAR MISTER EDITOR:

Zeke Grubb brought a book to the session at the country store Saturday night, and it set all the fellows thinking about the old days that weren't near as good back then as they look from here. It was "Dr. Case's New Recipe Book" that was put out in 1932. Zeke said his old lady found it recent when she was going through a trunk of odds and ends her Ma had given her 40 years ago.

Reading through the book, Zeke said, he came to understand why his old lady's Ma never could abide anything store bought. It wasn't grown or made at home, she figured, it weren't fit. What Dr. Case put out, allowed Zeke, was anything but a cookbook. His recipes was fer everthing from how to waterproof harness leather to how to treat kidney stones to how to make ginger beer. If you followed Dr. Case's advice, Zeke declared, you could turn out everthing offered in one of them big-city shopping centers.

Thinking about the book, Ed Doolittle said folks made their own soap and whitewash when he was coming along, and groceries was as cheap as a man could raise em. Ed said he, fer one, didn't want to go back to them days. But, there are some things, allowed Ed, that has got to modern, and answering services is one of em. He said he had to telephone the doctor the other day about getting a prescription refilled, but it was after 5 o'clock and all he got to talk to was a machine that told him, "leave. his message. Pretty soon, went on Ed, a person will be like a biddy in one of them big broad-

er houses. He can git born, live and die without ever having to speak to or touch another human being.

Actual, broke in Clem Webster, they ain't no way a feller can keep up with this dizzy world. Clem said he saw a piece of the other day where this doctor said looking at a patient's tongue is a complete waste of time. Use to, the doc could take your temperature and your pulse, thump your chest and check the color and coating on your tongue and find out all he needed to know about you. Now he hooks you up to a row of machines that makes marks across a paper and he's got to send them off to a specialist to find out if you're well, sick or dead.

Bug Hookum was agreed so much is going on we got to take one kind of news at a time. Bug had saw where a court in California has ruled that a youngun on roller skates is a vehicle, so he's looking fer wimmen in them bell-bottom hip hugger britches to be declared a traffic hazard.

It ain't no wonder, Bug allowed, that we can be convinced that dropping the dollar value 10 cent overseas, saving the Russians \$140 million on that wheat deal and raising the price of flour here is good fer the country.

Yours truly,  
Uncle Lew.

## Huron, Clinton Canoe Guides Available

The Huron-Clinton Metropolitan Authority offers two excellent maps for canoeists who enjoy canoeing the Huron or Clinton rivers throughout southeastern Michigan.

The "Huron River Canoe Map," covering the 101-mile stretch of the Huron River from Proud Lake in Oakland County to its mouth at Lake Erie in Wayne County, is divided into four sections: (1) Proud Lake State Recreation Area to Kinsington Metropark near Milford, (2) Kensington Metropark to the Village of Dexter, (3) Dexter to the City of Belleville, and (4) Belleville to Lake Erie. These maps show public canoe campsites, launching and parking areas, portages, canoe liveries, road crossings and other orientation points.

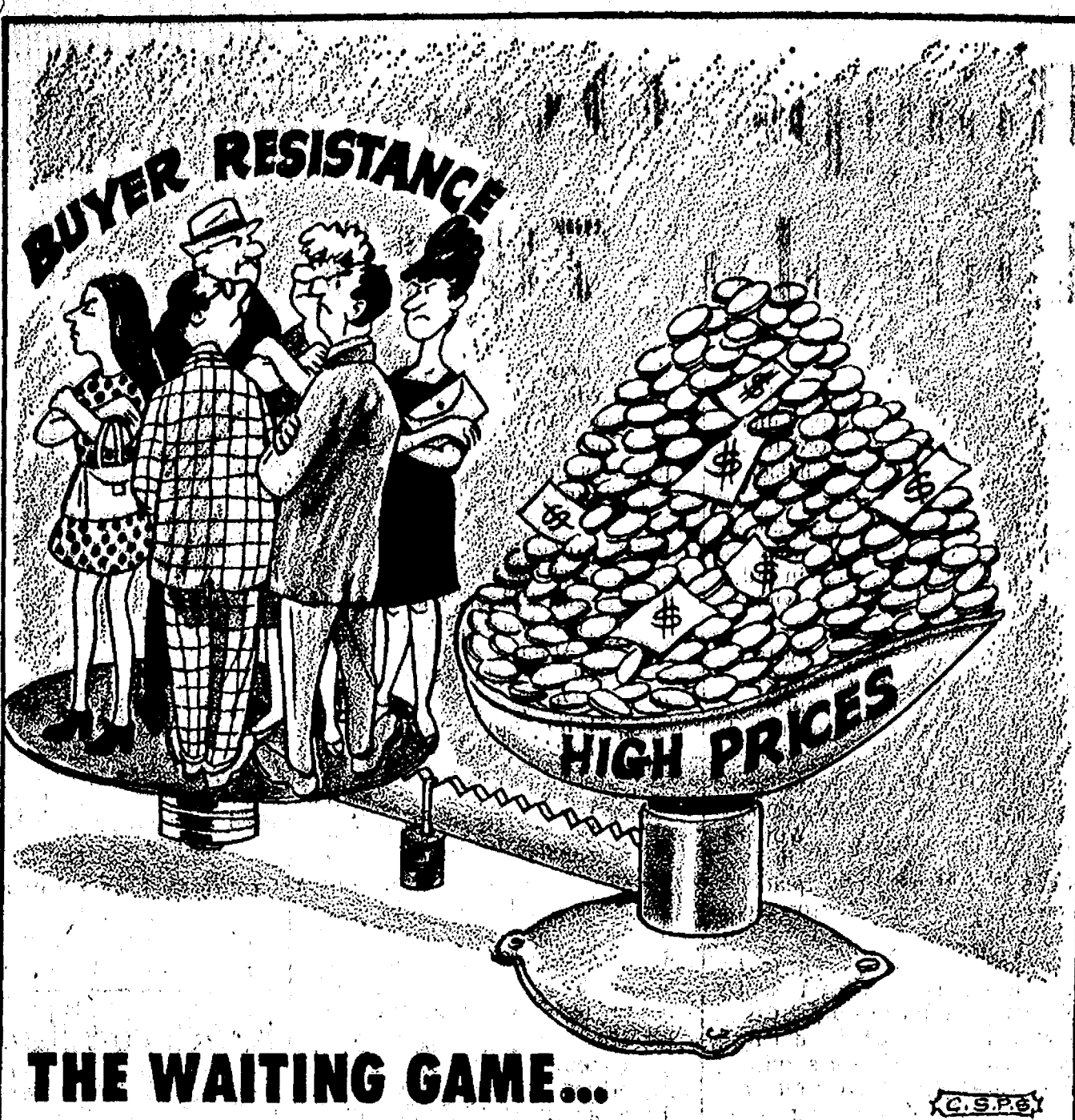
The "Clinton River Canoe Map," which has a black and gray cover, illustrates the most popular section of the Clinton River beginning in Oakland County from Degutindre and Avon Rds., near the Yates Cider Mill southeast of Rochester through Macomb county to Shady-side Park in Mt. Clemens. This course covers a 20-mile route. (Both maps were re-designed in 1977).

To obtain these maps write to: Huron River Canoe Map and - or Clinton River Canoe Map, in care of Huron-Clinton Metropolitan Authority, 600 Woodward Ave., Detroit 48226.

The Authority does not rent canoes, however, these maps are also available at Metropolitan Beach near Mt. Clemens, Stony Creek Metropark near Utica, Kensington Metropark near Milford, Hudson Mills Metropark near Ann Arbor and Lower Huron Metropark near Belleville.

### MODERN SUN WORSHIP

Monastir is Tunisia's beautiful seaside town to which sun lovers flock from all over western Europe. But to Moslems of 1,000 years ago Monastir was much more. To stand watch for only three days a top Monastir's fortifications guaranteed immediate entrance, upon death, into Paradise.



## MICHIGAN MIRROR

By Elmer E. White, Secretary, Michigan Press Association

### New Capitol Pushed

Rumblings are heard again in Lansing that Michigan needs a new Capitol building.

The proposed new Capitol has been talked about for years. The ground on which it would be built has been purchased, cleared of buildings and some preliminary work was done at a cost of \$3.5 million. At one point a few years ago all systems were go, plans had been approved, and the money was ready to be appropriated.

That was before 1970 with its recession and General Motors strike which put state government in a financial tailspin. The \$5 million included in that year's budget to continue work on the new Capitol was cancelled quickly as part of efforts to keep the state in the black.

Now, three years later, no further progress has been made, and some people who originally favored the idea aren't so sure it has that much merit any more. Gov. William G. Milliken declined to ask the legislature for any money for the building this time around and has made it clear it was not just an oversight on his part. He is one of those who decided the state needs a lot of things right now worse than it needs a new \$100 million building to house his staff and the legislature.

One of the reasons the new Capitol was pushed so hard a few years back was the lack of space in the current Capitol. The legislature kicked every state agency out of the building in its quest for space and then began making extra floors by dividing vertical space between each of the high-ceilinged floors. This provided two rooms where there used to be one. The result is a group of rooms with only a small window showing up a third of the way into the room in the overfloor sections.

Best estimate now is that the legislature has spent a total of \$8 million remodeling the building —

more than five times its original cost back in the 1890's.

Milliken and a number of others say there isn't much sense in spending that kind of money to replace it, even if the remodeling helps fireproof the building with the use of newer materials.

The current Capitol was opened in 1878. That makes it 95 years old at the present time. It was built after an architectural competition which was won by a Springfield, Ill., man named Elijah E. Mayers.

The first Michigan Capitol was in Detroit on a triangular plot at Griswold, State and Shelby streets. As the result of British aggressiveness in the War of 1812, state officials decided to move it to the interior of the state. In 1847 the town of Lansing, which then was just a cluster of cabins, was picked over the town of Marshall. Marshall is still not sure if this was a good or bad turn of events.

The first Capitol in Lansing was a frame, two-story building. There are now many state operated buildings near the Capitol. The entire block to its west consists of a complex of four buildings and a two-level underground parking lot which holds 2,000 cars. There is also talk of erecting a legislative office building to the south of the Capitol where the Plymouth Congregational church stood before it burned.

Latest speculation over the Capitol was spurred when the State Building Commission came out in early April in favor of beginning a new Capitol building "without delay." The Commission sent a special report to the governor saying \$5 million starting money should be provided for the project this year.

Milliken immediately threw cold water on the idea, pointing out all the remodeling which has been done in the present building.

The report of the commission said it would take eight years to complete a new Capitol if it were

started right away. By then, it said, there will be a real need for it.

"The structure is overcrowded and is being used beyond practical capacity," the report said. "The present Capitol has some potential for state government, particularly during the lengthy period of construction of a new state Capitol."

With talk of a tax cut this year and with other programs needing so much attention, it's doubtful the money will be appropriated right away. But the idea of a new Capitol has proven to be very resilient—one which continues to pop up and will not go away.

And with all that land sitting there vacant waiting for something, it's a good bet there'll be a lot more talk about a new Capitol in the future.

## Summer 4-H Club Projects Getting Underway

Youths in Dexter township are now enrolling in summer 4-H interest areas which will be as broad as the boys and girls interests indicate. At this time projects in flowers, gardening, crops, outdoor cooking, freezing, baking, rabbits, sheep, horses, beef, dairy and others are underway.

Leadership is provided by Mrs. Reuben Lindeman, Mrs. Joseph Ottman, Mrs. Dale Lindeman, Mrs. Norman Nickels, Mrs. Martin Ruhl, Jr., Mrs. Jay Hopkins, Mrs. Dale Lesser, Mrs. Albert Ruhl and Mrs. Neil Frank.

The next community meeting will be May 8, at Albert Ruhl's home at 1191 Colby Rd., at 9 p.m.

For information call Mrs. Hopkins, 475-7908 or Mr. Ruhl, 428-4912.

Telephone Your Club News To 475-1371.

## REAL ESTATE ONE

CALL US FIRST... BECAUSE WE ARE NEW LISTINGS!!!

73-0867 LOOKING FOR LAKE PROPERTY? We have a three bedroom year-round home on Buck Lake. The interior is knotty pine with a large living room area. It sits on a wooded lakefront lot and is close to good roads. \$29,500. Evenings call Don Slazinski at 971-5022.

75-YEAR-OLD FARM HOUSE on 8 acres. Solidly built large house with spacious rooms and plenty of light. 100 year old barn is also included. Perfectly suited for the larger family that wants to enjoy country life. \$49,500. Evenings call Ed Coy at 426-8285.

BUSINESS OPPORTUNITY in a small community. It's a beer and wine tavern which was remodelled five years ago, with a new small kitchen for light meals. Also includes a large apartment upstairs. Possibility of liquor in the future. \$68,500. If this interests you contact Bob Parker evenings at (517) 764-2015 or days at our office.

78-0817 JACKSON COUNTY. There are four enticing parcels just west of Jackson. It's heavily rolling land with a commanding view. 18 acres for \$17,500, 14 acres for \$14,000, and two 12 acre parcels for \$11,000 each. Come see it and let your imagination do the rest. Evenings call Gary Lillie at 769-1834.

IT WON'T LAST!!! 80 acres on an Interchange fifteen miles north of Muskegon. It would make an excellent camp site since it is near Lake Michigan and a recreation area with canoe fishing and hunting. Septic field and tank already in. Priced to sell at \$36,000, terms. Evenings call Bob Myrnel at 683-0122.

### WHY LIST WITH REAL ESTATE ONE?

1. WE FIND BUYERS—over 5,000 homes sold each year. (A city the size of Traverse City, Monroe, or Ypsilanti.)
2. BEST PRICE—COMPUTERIZED APPRAISAL TECHNIQUES help get top price.
3. OUT OF STATE BUYERS — We maintain a separate salaried department which specializes in contacting transferees and large and small corporations.
4. WE TAKE TRADES—over \$3,000,000 worth of property sold last year because of our Trade In Program.
5. WE HAVE 23 LOCAL OFFICES AND 13 OUT-STATE OFFICES TO SERVE YOU.
6. CLOSING EXPERTS—We maintain the most modern computerized closing department staffed by professionals.
7. BEST TRAINED—Our Sales Associates spent over 50,000 hours in technical instruction last year alone.
8. FULLY STAFFED — We have 350 full time professional sales associates.
9. WE SHOW HOMES — over 1200 prospective buyers are shown homes by REO Associates each week.
10. OUR EXCLUSIVE PHOTOGUIDE has a distribution of over 50,000 a year to prospective buyers, corporations, motels and retail stores.
11. WE ADVERTISE MORE THAN ANY OTHER COMPANY — over six full pages of newspaper advertising alone each week, plus radio and television.

## Real Estate One.

WEED REALTY, INC. ASSOCIATES

ANN ARBOR  
1300 S. MAIN  
761-8313

CHELSEA  
1196 M-52  
475-8693

MEMBER MULTIPLE LISTING SERVICE

## JUST REMINISCING

Items Taken from the Files of The Chelsea Standard

### 4 Years Ago...

Thursday, April 24, 1944—

"The Plum Street Warehouse" from Chelsea will be among 11 musical groups competing in the April 26 preliminary "Battle of the Bands" contest sponsored by Saline Jaycees. Drummer Larry Gorton, guitarist Ken Dove and organist John Michelson make up the Chelsea group.

Army Sergeant Thomas M. Steele, 22, son of Mr. and Mrs. John W. Steele, 13877 E. Old US-12, received the Silver Star, March 30, near Chu Lai, Vietnam. He received the award for gallantry in action while engaged in ground operations against a hostile force in Vietnam.

Dave Conklin and Dan Spaulding from Chelsea tied Naida from Milan for medalist honors at 38, and Ryan Smith and Mike McKelghan had 44 to give Chelsea a team score of 162 while defeating Saline and Milan in a triangular meet Thursday.

Five new teachers, increased salaries for school personnel, two new buses and over-all rising costs have increased the Chelsea schools operating budget by approximately \$235,000. Only \$195,000 of that amount represents increased taxation. State aid, estimated to be up \$40,000 over the 1968-69 school year, will account for the difference.

Mrs. Bruce Spencer received a Bachelor of Science degree and an elementary provisional teaching certificate during commencement exercises Saturday, April 19, in Read Fieldhouse on the Western Michigan University campus. Mrs. Spencer, the former Suzanne Liebeck, daughter of Mr. and Mrs. James P. Liebeck, is a 1965 Chelsea High school graduate and 1967 graduate of Jackson Community College.

Approximately 200 parents, students and school personnel attended the Monday night school board meeting where the Board of Education and the Chelsea High school administration were both criticized for their disciplinary policies.

### 24 Years Ago...

Thursday, April 28, 1940—

The resuscitator for this community has been ordered, according to members of the committee in charge of raising funds for its purchase. It should arrive this week, they say.

Mrs. William Weber, Chelsea chairman of the Washtenaw County chapter of the American Cancer Society, is completing arrangements for the annual Tag Day which climaxes the drive for funds during the month of April.

Behind the fine pitching of Dave Crocker, Chelsea's "rookie," the Bulldogs whipped Milan, 4-0, last Friday at Milan. "It was Crocker's first starting assignment in a high school game."

John Weber, 119 Madison St., has returned after spending several weeks in Germany with his parents, Mr. and Mrs. Andrew Weber, at Bayreuth, Bavaria. Weber traveled both ways by plane and visited Nuernberg, Frankfurt, Wurzburg, and other points.

Mr. and Mrs. Roger Hinderer, of Grand Rapids, spent the week-end here at the home of the former's parents, Mr. and Mrs. Otto Hinderer. Additional guests on Sunday were Mr. and Mrs. Garrett Averill and son, and Mrs. Ezra Averill, also of Grand Rapids.

### 34 Years Ago...

Thursday, April 27, 1936—

Mrs. Roscoe Lonsway was hostess to the Tachez Club on Monday evening. Four tables of 500 were in play and honors were awarded to Mrs. F. W. Merkel and Mrs. Norbert Merkel.

Mrs. Storm's chapter of the Congregational church was entertained at the home of Mrs. Ed Frymuth on Thursday afternoon. Mrs. W. S. Davidson was in charge of the devotionals. Readings were given by Mrs. O. H. Hinderer, Mrs. F. E. Storms and Mrs. J. N. Dancer. Refreshments were served by Mrs. L. D. Fox, Mrs. B. Crocker and Miss Nina Crowell.

The home of Mrs. O. C. Burkhardt was the scene of a pleasant family gathering on Sunday evening, when Mr. and Mrs. E. E. Winans entertained at supper honoring five members of the family who have birthdays in April. They are Mrs. O. C. Burkhardt, Mrs. A. E. Winans, Mr. and Mrs. John Osterle and David Winans.

Through the efforts of Fred B. Broesamle, Sylvan township supervisor, the County Road Commission is getting Cavanaugh Lake Rd. ready for blacktopping this summer. The road is being graded, low places are being filled and tiling is being done where necessary. The hard surface will start on the

## Crop Insurance Corp. Anticipating Record High Year

Jess Bishop, regional sales director, announced today that more Michigan farmers are insuring their crops than at any time since 1938 when Congress passed the Federal Crop Insurance Act.

Last year 827 corn farmers were insured for \$933,656, 326 soybean growers for \$363,373, dry bean farmers 1088 policies for \$2,150,394, sugar beet farmers 51 policies for \$192,318. Four hundred new policies—an estimated \$1,500,000—have been written for 1973. When enrollment ends Michigan will have a new record of Federal Crop Insurance participation.

Even though Michigan farmers produced a record crop in 1972, harvesting conditions were so bad that many acres were not harvested and have deteriorated to the extent that \$275,000 is being paid to Michigan policyholders.

Due to extremely wet fields, planting may be late. Many farmers have signed up for Crop Insurance which protects their crops from losses caused by any natural hazard such as excess rain, flood, drought, hail, plant disease or insect damage. This protection is financed with premiums paid by farmer policyholders.

In order to maintain a sound financial position, Federal Crop Insurance continues the practice of limited gradual expansion. Many counties are near their maximum participation for 1973. May 10 is the last day any new applications or reinstatements of existing policies can be accepted for corn and soybeans.

All farmers wishing service or information should contact the Federal Crop Insurance Office at Federal Crop Insurance Corporation, USDA, R. 5, West Chicago Rd., Coldwater, 49036, telephone 517-278-2068.

north side of the railroad crossing at the Methodist Home and will extend to the Jackson county line. On Thursday, April 20, Ed Weber sold his Princess Theatre to the Sylvan Theatre, management and possession was given Monday, April 24. Included was the full equipment.

## WICK HOMES

Tomorrow's Homes TODAY

## OPEN HOUSE

This Weekend  
SATURDAY, 1-5 p.m.  
SUNDAY, 1-5 p.m.

See tomorrow's home today from Wick Homes. It's the newest in professionally designed panelized homes — featuring new ideas, latest factory building techniques and lowest possible cost to you. Beautifully furnished.

DIRECTIONS:  
7900 Chelsea-Manchester Rd.  
1-94 Exit 159, South on M-52

**RAY McCLEERY**  
DEALER  
Phone 428-7404

'Come and see our Expansion Program underway'

## INVERNESS INN

Your Innkeepers: Matt and Marge  
13996 North Territorial Rd. - North Lake

YOUR FAVORITE MEALS  
SHRIMP, CHICKEN & FISH DINNERS

BEER - WINE - LIQUOR - PIZZAS  
LUNCHEON SPECIALS

Featuring "This, That & the Other Thing"  
Friday Evenings

Established 1871

## The Chelsea Standard

Telephone 475-1371

Excellence Award By Michigan Press Association  
1951-1952-1960-1964-1965-1966

Walter P. Leonard, Editor and Publisher

Published every Thursday morning at 800 North Main Street, Chelsea, Mich. 48118, and second class postage paid at Chelsea, Mich., under the Act of March 3, 1879.

Subscription Rates (Payable in Advance)

In Michigan:	Outside Michigan:
One Year \$4.00	One Year \$6.00
Six Months \$2.25	Six Months \$3.50
Single Copies \$ .15	Single Copies \$ .20

Service men or women, anywhere, 1 year \$4.00

MEMBER  
**NATIONAL NEWSPAPER**  
Association Founded 1898

National Advertising Representative:  
MICHIGAN NEWSPAPERS, INC.  
257 Michigan Ave.  
East Lansing, Mich. 48823

DON'T WASTE NATURAL GAS.

## Sandy Martin's Gas oven remembers—even if she forgets.

Sandy's new Gas range has a number of Gas-saving features, including one that automatically cooks food at a preselected time and temperature, and then turns down the heat and holds it at exactly the right temperature for serving. This feature saves Gas, and money too, because it uses the precise amount of heat needed and prevents overcooking.

Gas does so many things so well—so inexpensively—that we should make sure we don't waste it. You can help conserve Natural Gas if you will stop "oven peeking," prepare complete oven meals occasionally, and limit oven preheating to 10 minutes.

And if your range needs replacing, see the new, efficient, Gas-saving models at appliance dealers or Michigan Consolidated Gas Company business offices.

**MICHIGAN CONSOLIDATED GAS COMPANY**  
We care about your tomorrow.





**GUEST OF HONOR:** The Peter Rabbit was on hand at the annual Easter Egg Hunt Saturday, to congratulate the young participants. Some were shy and watched from afar (left) while others approached eagerly hoping to meet the important "personage."

## Track Team Romps Over Lincoln, 78-45

The Bulldogs track team broke into the winner's circle, last Thursday, when a win over Lincoln tipped its conference record to 2-1. The 78-45 victory gave Chelsea a season record of 3-1.

Karl Gauss was the only double winner for Chelsea as he won the 100- and 220-yard dashes in addition to running with the winning 880-yard relay team.

Lincoln, a relatively young team, ran better than expected but again Bulldog field event strength and team depth decided the contest in Chelsea's favor.

A highlight of the meet was Tim Lancaster's record-breaking pole vault of 12'9". Jim Wojcik set the old record at 12'3" in 1970. Chelsea also took second place in this event when Don Pierson cleared 12 feet.

Chelsea was again on top of the shot put competition with sophomore Ishmael Picklesimer, tossing the weight 42'2". Third in that event went to Rex Miles with a distance of 38'8". Both first and second places in the long jump were Chelsea's with Bruce Guster winning at 20 feet and Chris Coltre making over 19'2".

Rick Sweeney didn't top off the high jump competition until he had soared over the 5'10" mark. Bill Tite was also stopped at 5'10", but earlier, so he took third.

Howard Salyer, Craig Coltre, Karl Gauss and Bruce Guster were the winning combination in the 880 relay. Their time was 1:35.8, which is considerably less than Jeff Marshall's time, 2:09.9, in the 880-yard run. He earned a second in that event, and was followed by Jeff Van Riper at 2:14.3.

Bill Tite sailed over the high hurdles in the 120-yard event, clocking at time of 17.1 for a first place. Craig Coltre was next with 18.3.

John Beeman was the only Chelsea man to place in the mile run. His time of 5:03.7 took first. Karl Gauss's first in the 100-yard dash was followed by Ishmael Picklesimer's 11.3 effort. He took third.

Bruce Guster was second in the 40-yard dash with a time of 52.7 while Craig Coltre was first in the 180 low hurdles with a time of 21.7. Another of Gauss' firsts, in the 220, was followed by Curt Winans' 26.1 time. Curt was a third. John Story with 11:06.4 took second in the two-mile run.

The mile relay was won by Chelsea's team of Don Pierson, Dennis Bauer, Jeff Van Riper and Jeff Marshall. Their time was 3:50.1.

This week-end, when the team travels to Albion for the Albion relays, it will find itself in a new section, Section III, a promotion because of Chelsea's increased enrollment.

This means there will be rugged competition in store from such schools as Holly, Hillsdale, Albion, Mason and Jackson Lumen Christi.

The following week the team travels to Dundee, on Tuesday, May 1, and then meets league leader South Lyon on Thursday, May 3, at home. South Lyon, coming fast, recently knocked off Saline, the school that downed the Bulldogs in the conference. The coach promises a close and interesting meet.

### Concealed Weapons Charge Is Dismissed

Jack Lynne Williamson, who was arrested by Chelsea police March 1, on a charge of carrying a concealed weapon, was cleared of that charge, Monday, in 14th District Court. The case was dismissed.



**SPRING HAS COME** and with it those April showers that threatened to dampen the annual Easter Egg Hunt last Saturday. The heavens waited until all the kiddies and all the eggs were hustled off the football field before starting to 'sprinkle'.

Winners in the Jaycee-sponsored event were from left, in the back, Dale Petsch, Richard Slater, of course Mr. Bunny, Randy Sabo and Bill Merkel, and, in the front, Robby McDowell, John Wesley Poulter, Melissa Hamilton and Christine Akin.

## Annual May Fellowship Day Slated Next Friday

May Fellowship Day, a yearly observance for Church Women United across the county, will be celebrated in the Chelsea area, May 4, at North Lake United Methodist church with a 12:30 pot-luck dinner. This year's theme, "As Hand Touches Hand," will focus on the organization's volunteer services in the community.

The celebration will be a salute to the volunteers from local units of Church Women United who have initiated programs in health care, in education for children and adults, in services to the aging, and to the imprisoned.

In Chelsea, Jan Schairer will explain the literacy program, while Florence Steger of the volunteer program at the Chelsea Community Hospital speaks of good works there. Agnes Guinan will talk about work at the House by the Side of the Road and Ann Steinaway will talk about Home Meal

Service. Mary Jan O'Hare will represent the Equinox teen center. This program of speakers will begin at 1:30 after the pot-luck dinner. There will be a nursery and those bringing children, are asked to furnish a sandwich for them. Milk will be provided by the North Lake church.

The Fellowship Celebration will close with a worship service under the leadership of Mrs. James Stirling. Mrs. V. O. Johnson will speak at that time on her philosophy of volunteer service.

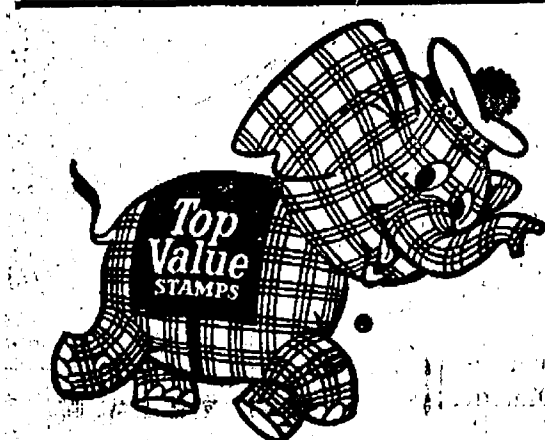
Also as part of the day's activities: a box social, to benefit the Equinox teen center, is being planned. Cans of unpopped corn, salad oil and box cakes would be appreciated.

Church Women United has been a major partner for the past eight years in Women in Community Service, a nation-wide coalition of women's groups dedicated to helping

young women from poverty backgrounds to achieve a fuller life. Volunteers have channeled more than 49,000 young women into the Job Corps and provided supportive services to 220,000 others.

Protestant, Roman Catholic, and Orthodox women from more than 2,000 local units of Church Women United will come together in their local communities on this first Friday in May. In their worship celebrations they will dedicate themselves to work in partnership with their neighbors.

The Commission on Geography and Afro-America, a national organization for upgrading geography instruction at predominantly black colleges, is headquartered at the University of Michigan. The Commission is sponsored by the Association of American Geographers and funded by the federal government.

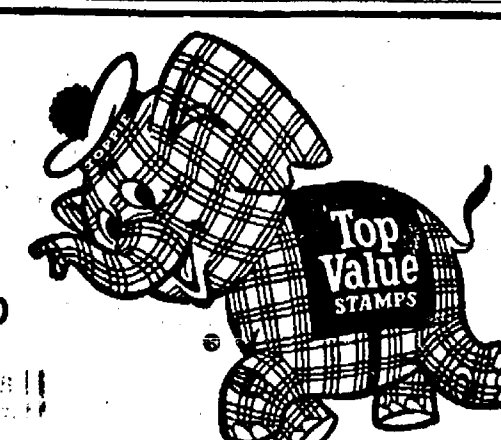


**Full Line Supermarket**  
BEER - WINE - LIQUOR  
LOTTERY TICKETS  
MARATHON GAS PUMPS  
2-CYCO GAS PUMPS  
AUTHORIZED  
FOOD STAMP STORE

# Jiffy market

Big Enough To Serve You . . . Small Enough To Know You!

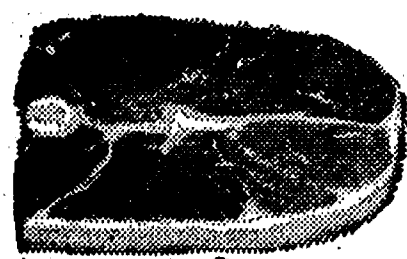
**Open 7 Days A Week**  
7 a.m. to 10 p.m.  
Corner Sibley & Werkner Rds.  
PHONE 475-1701



**TOP VALUE STAMPS - GUARANTEED SATISFACTION - COURTEOUS SERVICE**

### MEAT DEPT.

U.S.D.A. CHOICE BEEF



### ROUND STEAK

Full Cut \$1.29 lb.

TOP ROUND . . . . lb. \$1.39  
BONELESS ROUND, lb. \$1.39  
CUBE STEAKS . . . lb. \$1.49  
RUMP ROAST . . . lb. \$1.49

ECKRICH'S SMOKEES SAUSAGE . 1-lb. pkg. \$1.19  
HICKORY HOST WIENERS . . . 2-lb. pkg. \$1.49  
PESCHKE CHUNK BOLOGNA . . . lb. 69¢  
YOUNG TENDER BEEF LIVER, sliced . . . lb. 79¢  
OLD FASHIONED SMOKED CENTER HAM SLICES . . lb. \$1.19  
ARMOUR'S PURE LARD . . . 1-lb. pkg. 24¢

WAY BAKING CO.—The Bread That A Family Can Afford

## Kleen-Maid Bread 2 1/4-Lb. Loaves 49¢

CAMELOT  
SALTINES . . . . 1-lb. box 19¢  
LADY CAMELOT TOWELS . . . 180-ct. roll 19¢  
LADY CAMELOT FACIAL TISSUE, 200-ct. box 15¢  
15 1/2-OZ. CAN BROOKS CHILI HOT BEANS . . . 19¢  
4-OZ. CAN DURKEE'S BLACK PEPPER . . . . 39¢

1-LB., 8-OZ. CAN MORTON HOUSE BEEF STEW . . . . 59¢  
LARGE ASSORTMENT REG. 39¢  
COOKIES . . . . 3 pkgs. \$1  
2 FULL DISPLAYS GARDEN SEEDS . Price As Marked  
11-OZ. JAR BORDEN'S CREMORA . . . . 49¢  
1-LB. PKG. CAMELOT ELBOW MACARONI . . . 19¢

RISDON'S—The milk that lowered Chelsea's Milk Prices

## HOMOGENIZED MILK gal. 88¢

1-LB., 1-OZ. CAN GREEN GIANT GREEN BEANS 19¢  
1-LB., 1-OZ. CAN Green Giant Whole Kernel Corn 19¢  
1-LB., 1-OZ. CAN GREEN GIANT SWEET PEAS 19¢  
1-LB., 1-OZ. CAN Green Giant Cream Style Corn 19¢  
FANCY SUGARLOAF FRESH PINEAPPLE . . ea. 49¢

1-PT., 2-OZ. TOILET BOWL CLEANER SNO - BOL . . . . 29¢  
20-30 GAL. DECORATOR TRASH BAGS . . 10-ct. box 59¢  
1-LB., 12-OZ. CAN HUNT'S PORK & BEANS . . . 23¢  
HEFTY 10-CT. ECONOMY PACK LAWN CLEAN-UP BAGS . \$1.29  
YELLOW ONION SETS . lb. 49¢

YOUR CHOICE OF BRANDS & SIZES

## CIGARETTES . \$3.39 Carton

### FROZEN FOODS

#### CAMELOT FROZEN ORANGE JUICE

6-Oz. Can 19¢

#### MEADOWDALE FRENCH FRIES

2-Lb. Pkg. 29¢

#### NEW YORK GARLIC BREAD

14-Oz. Loaf 49¢

#### P.D.Q. ALL-BEEF HAMBURGERS

2-Lb. Patties \$1.99

#### SALUTO PARTY PIZZA

2-Lb., 1-Oz. \$1.99

### it's Baby Week

Smart Moms Get a pair of Gerber Baby Socks With Gerber Labels

Use order form on display in our baby foods department.

### Gerber BABY FOODS

CEREALS 8 oz. 19¢  
CEREALS W/BANANAS 8 oz. 3 for \$1  
HI-PRO W/PEACHES 8 oz. 3 for \$1  
HIGH MEAT DINNERS 4 1/2 oz. 19¢  
TODDLER MEALS 6 oz. 19¢

### KIMBIES DIAPERS

Newborn, 30-ct. \$1.39  
Daytime, 30-ct. \$1.49  
Overnight, 12-ct. 89¢

### BABY FORMULA CONCENTRATE

SIMILAC, 18-oz. Can  
ENFAMIL, 13-Oz. Cans  
Case of 24 Cans \$7.75

### JIFFY MARKET SERVES CHELSEA

Where Else Can You Be Served So Well?

OPEN DAILY - 7 a.m. to 10 p.m.

LIQUOR - BEER - WINE  
FRESH MEATS and PRODUCE

Everyday Low Cost on Gas, Bread, Milk.  
A Supermarket supply to meet your needs.

WEEKLY SALE BARGAINS EVERY DAY!  
SUPERMARKET PRICES & FREE TV STAMPS



We appreciate your business!

### JIFFY MARKET - MARATHON GAS

LOW PRICES PLUS FREE TOP VALUE STAMPS

REGULAR GAS

37.9 gal.

Price Includes All Taxes

PREMIUM GAS

39.9 gal.

Price Includes All Taxes

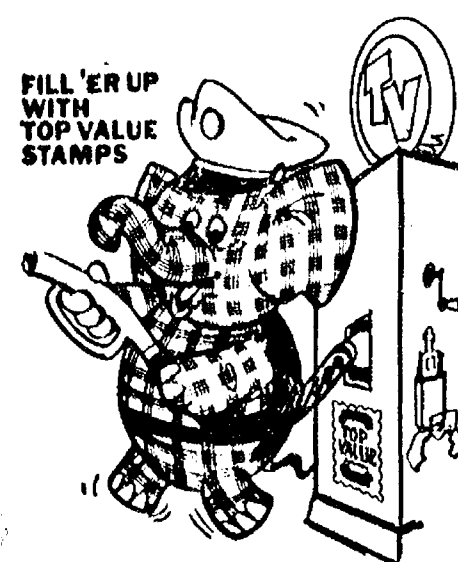
### HOT PRICES ON GAS PUMP SPECIALS

LARGE GAS CANS

\$2.99

WINDSHIELD WASHER

Gal. 49¢



Mich. State Lottery Tickets - Fresh Meats - Produce - Groceries - Beer - Wine - Liquor - Magazines - Frozen Foods - Fresh Bakery Goods - Health & Beauty Aids - Daily & Sunday Papers



Ads

Taken  
Till 1 p.m.  
Tuesday

# USE ACTION-PACKED WANT ADS

Just  
Phone  
475-1371

## WANT ADS

## The Chelsea Standard

## WANT AD RATES

PAID IN ADVANCE—All regular advertisements, 25 cents for 25 words or less, each insertion. Count each figure as a word. For more than 25 words add 3 cents per word for each insertion. "Blind" ads or box number ads, 50¢ extra per insertion. CHARGE RATES—Same as cash in advance, with 15¢ discount for cash payment if not paid before 1 p.m. Tuesday preceding publication. Pay in advance, send cash or stamps and save 25 cents. DISPLAY WANT ADS—Rate, \$1.40 per column inch, single column, width only, 3-point and 14-point light type only. No letters or boldface type. Minimum 10 lines. 10¢ per line. 10¢ per line. 10¢ per line. COPY DEADLINE—1 p.m. Tuesday week of publication.

## GAR - NETT'S

Flower & Gift Shop  
Your Friendly Florist  
112 E. Middle St., Chelsea  
PHONE 475-1400

Funeral Flowers  
Wedding Flowers  
Cut Flowers (arranged or boxed)  
Potted Flowering Plants  
Green Plants, Corsages  
WE DELIVER

Custom  
Kitchen Cabinets  
and  
Formica Tops  
Made to Order  
475-2857

Chelsea  
Associated Builders  
Custom Building and Remodeling  
Over 20 years experience.  
Call 475-8182.

PITTSBURGH  
Interior Paint Sale  
Still On

WALLHIDE FLAT LATEX  
\$6.49 gal.  
SATINHIDE LO LUSTRE  
LATEX ENAMEL  
\$9.47 gal. \$2.57 qt.

Chelsea Hardware

FOR SALE—Slingerland drum  
includes case, stand, practice pad  
and sticks. Used one year. Phone  
475-8116.

Big Selection  
Yard Goods  
Zippers  
Thread

DANCER'S  
BASEMENT

## WANT ADS

PROFESSIONAL CARPET cleaning  
service expanding to Wash-  
tenaw county. All sizes and types  
of carpets cleaned, day or night.  
Call (517) 522-4337 for free estimate.

## ALLSTATE INSURANCE

AUTO - BOAT - COMMERCIAL  
LIFE - HEALTH - HOME  
Phone Eves. or Week-ends for

N. H. MILES, Agent  
GR 5-8334

## Siding, Roofing and Gutters

Reasonably priced and licensed.

## Mills

Construction Co.  
Call 851-8857  
for free estimates.

## A-1 USED CARS

'72 PINTO Station Wagon.  
'71 THUNDERBOLT  
'71 MERCURY 4-dr.  
'70 MUSTANG 2-dr. hardtop.  
'70 LTD hardtop.  
'70 FALCON 2-dr. hardtop.  
'70 FALCON 2-dr.  
'69 GALAXIE 4-dr.  
'69 LTD 2-dr.  
'69 MERCURY wagon.  
'68 LTD 4-dr.  
'68 FAIRLANE 500 2-dr. hardtop.

## Check Our New Triangle Truck Lot

At intersection of M-52  
and Old Manchester Road

'72 FORD 1/2-ton.  
'71 FORD 1/2-ton.  
'70 FORD 1/2-ton.  
'68 CHEVROLET 1/2-ton.  
'65 FORD 3/4-ton utility.

## PALMER FORD

SINCE APRIL 1912  
Ask For:  
JOHN POPOVICH  
MATT WILLIAMS  
DON LAWHORN  
LYLE CHRISWELL

## ASSEMBLY

Reliance Electric Company is presently interviewing for openings in its assembly operation. High school graduates who have a minimum of one year electronics schooling or experience are preferred. Must have mechanical ability. Wage scales are commensurate with applicable experience.

Apply in person  
between 8 a.m. and 3 p.m.

## Reliance Electric Co.

750 North Maple Rd.  
Saline, Mich. 48176  
Phone 428-4951

An equal opportunity employer  
SEAMLESS ALUMINUM Eaves-  
troughs installed and guaran-  
teed. White and colors available.  
For free estimates, call Rick Klein-  
schmidt, R. D. Kleinschmidt Co.,  
428-8886.

## WANT ADS

## KNAPP SHOES

For Cushion Comfort  
Robert Robbins  
475-7282

## D&amp;G Allen Excavating

Septic Tanks and Drainsfields  
Back Hoe and Dozing  
Sand, Gravel and Topsoil Hauled  
Phone (517) 851-8386  
or (517) 851-8278

FOR SALE—4 h.p. riding mower.  
Call 475-7628.  
WEDDING INVITATIONS—Chel-  
sea Card & Gift Shop, 116 S.  
Main St. 475-7501.

FOR SALE—Indian cards, post-  
cards, books, foreign coins,  
Australian opals, and other arti-  
cles. Lawrence E. Guinan, 1571  
Sugar Loaf Lake. Call 475-2817.

## SHARPENING SERVICE

Mower blades, scissors and saws.

185 E. Middle, Chelsea  
Phone 475-1227

## Annual Spring Used Car Bonanza

All cars thoroughly reconditioned  
and specially priced.  
DON'T MISS THIS SALE!

## DEMO

'73 DODGE Polara Custom 2-dr.  
hardtop, 360, auto., p.s., p.b.,  
air cond., vinyl roof, rear  
speaker. Save

## Previously Owned Autos

'72 GOLD DUSTER, 225, auto., p.  
s., radio, 6,800 miles. \$2,495  
'71 FORD LTD Country Squire  
wagon, p.s., p.b., AM-FM, air  
cond. \$2,895  
'71 DUSTER 340 sport coupe, auto.,  
p.s., rallye wheels, vinyl roof,  
RW tires. \$2,195  
'70 CHALLENGER RT 2-dr. hard-  
top, 360, auto., rallye cluster  
and suspension. \$1,995  
'70 DUSTER, sport coupe, 225, 3-  
speed, radio, new white sidewall  
tires. \$1,295  
'70 PLYMOUTH Satellite 2-seat  
wagon, 318, auto., p.s., p.b., air  
cond., 27,000 miles. \$1,995  
'70 DODGE Super Bee 2-dr. hard-  
top, 360, auto., p.s., rallye  
wheels, black and sharp. \$1,895  
'69 PLYMOUTH Sport Satellite 2-  
dr. hardtop, 318, auto., p.s.,  
vinyl roof, buckets. \$1,395  
'69 CHRYSLER New Yorker 4-dr.,  
full power, air cond., vinyl  
roof. \$1,895  
'68 FORD Falcon station wagon,  
'67 DODGE Coronet 500 convert-  
ible, 360, auto., p.c., very  
clean. \$995  
'65 TEMPEST 4-dr. 6-cyl., auto.,  
good transportation. \$295  
'64 FORD 4-dr., V-8, auto., p.s.  
\$195

## TRUCKS

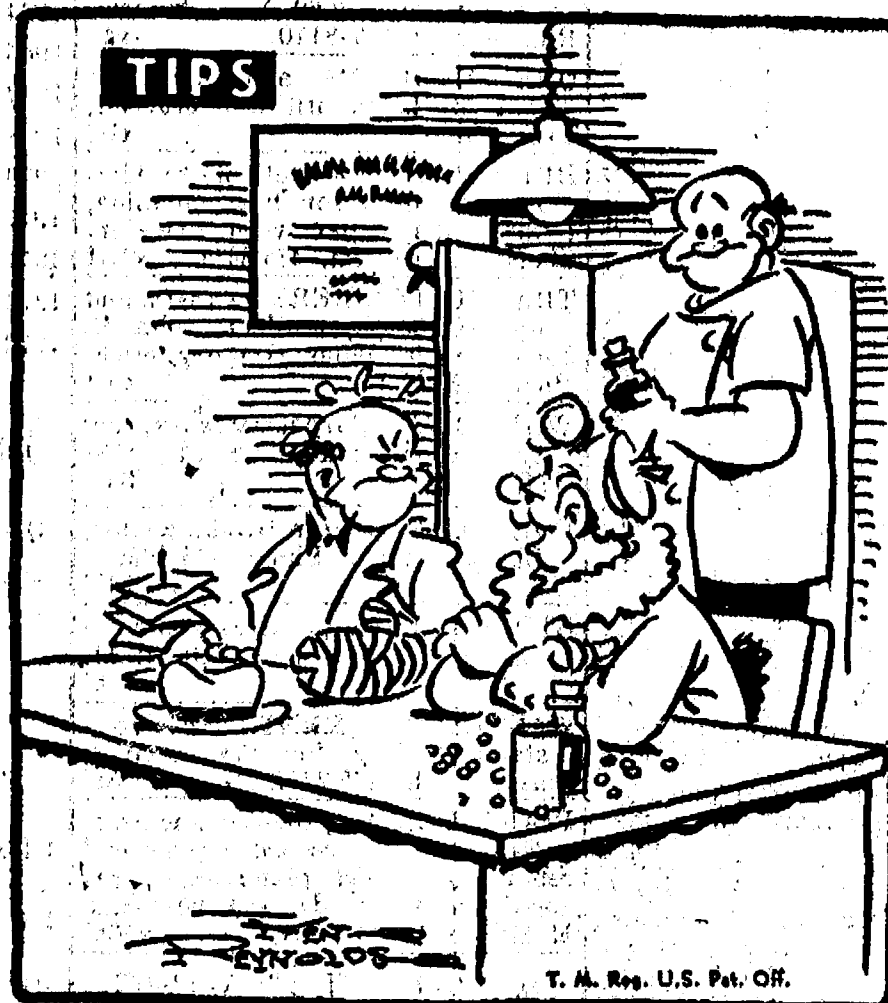
'71 DODGE D-100, 318, auto., step  
bumper, radio, junior WC in-  
stalls. \$1,995  
CHEVY 21-ft. Camper Van, 6 cyl.  
engine, 3-speed trans., banks,  
dinetto. \$395

## Village

## Motor Sales, Inc.

IMPERIAL - CHRYSLER  
DODGE - PLYMOUTH  
Phone 475-3681  
1185 Manchester Rd., Chelsea  
Hours: 8 a.m. to 6 p.m.  
Tues. thru Fri. Until 9 Monday.  
9 a.m. to 2 p.m. Saturday

ELECTROLUX  
VACUUM  
CLEANERS  
SALES and SERVICE  
JAMES COX  
Ph. 428-2931 or 428-8221  
Manchester



"Look at the bright side—it was the tools you got in the  
Standard Want Ads that taught you how to dance!"

## WANT ADS

BOWLING SNOW REMOVAL Serv-  
ice, residential and commercial,  
low rates. Prompt and dependable  
service. Call evenings on the week  
days and all day on the week-ends.  
475-2129.

Headquarters for  
RED WING  
WORK SHOES  
Foster's Men's Wear

CUSTOM  
BUILDING  
LICENSED & INSURED  
FREE ESTIMATES

TOTAL  
CONSTRUCTION  
SERVICES

—Residential, commercial and  
industrial  
—Garages  
—Remodeling + Additions  
—Aluminum Siding  
—Roofing  
—Trenching

SLOCUM  
CONTRACTORS  
& BUILDERS

Serving Washtenaw County  
For Over 20 years  
20700 OLD US-12  
Chelsea  
Phone 475-8821 or 475-7611

New and Remodeling  
Residential  
Carpenter Contractor

M. A. LAWRENCE  
Ph. 475-1106

WEDDING INVITATIONS—Chel-  
sea Card & Gift Shop, 116 S.  
Main St. 475-7501.

REAL ESTATE  
FOR QUICK SALE  
Call 475-8563

Or come to  
616 South Main St.  
Chelsea

Kern Real Estate  
BROKER  
Phone 475-8663

## Listen to that "all's-well" purr

Your car's engine will "purr"  
with contentment after our ex-  
perts change the oil and give it  
a good lubrication.

Sweet music to your ears is the purr  
of your engine, sure promise of pep,  
power and performance after our  
servicemen drain the sludge and fill  
the crankcase of your car with highest  
quality PURE oil.

UNION 76 PETROLEUM PRODUCTS

Jim's Union 76 Service  
Tires — Batteries — Tune-Ups — Brake Service — Wheel Alignment  
PHONE 475-2822

## WANT ADS

Signs Painted  
475-7391

WEDDING INVITATIONS—Chel-  
sea Card & Gift Shop, 116 S.  
Main St. 475-7501.

## THORNTON

475-8828

BRICK COLONIAL—Wooded lot,  
4 bedrooms, 2 1/2 baths, fenced  
dining room, lots of extras. A true  
country setting.  
EXCELLENT LOCATION—Older  
home in village, 3 bedrooms, barn  
type garage, in good location.  
COLONIAL B-LEVEL—near ele-  
mentary school, 3 bedrooms, 2  
baths, a lovely well maintained  
home.  
GOLF COURSE FRONTAGE—  
All brick ranch home, fully car-  
peted, 3 bedrooms, 2 baths and  
access to North Lake.

VILLAGE—Nicely renovated home  
close to village center, 4 bed-  
rooms, fully carpeted.  
7 ROOMS—With fireplace, 3 bed-  
rooms and a brand new com-  
plete kitchen. You must go thru  
this home.  
POOL ROOM—And 11 other rooms  
are in this lovely 100-year-old  
home situated on a wooded lot  
in the Village of Stockbridge.

JOSLIN LAKE—Excellent condi-  
tion, a well maintained year-  
around air conditioned home. Great  
spot for retirement.  
5 acres—\$4,500.  
10 acres—\$14,500.  
12 acres—With pond, \$17,500.  
10 acres—Wooded, \$15,000.

BUILDING SITES  
5 acres—\$4,500.  
10 acres—\$14,500.  
12 acres—With pond, \$17,500.  
10 acres—Wooded, \$15,000.

## THORNTON

323 S. Main Realtor Chelsea  
Eves:  
Helen Lancaster 475-1198  
Bob Riemenschneider 475-1469  
John Pierson 475-2064  
Bob Thornton 475-8867

NEEDED TO RENT: Working  
mother with one child needs 2-  
bedroom apartment or small house  
in Chelsea School District by end of  
May. Call 662-4696 weekdays, 9-5.

Sand Gravel

KLINK  
EXCAVATING

Buildozer - Backhoe  
Road Work - Basements  
Trucking - Crane Work  
Top Soil - Demolition  
Drainfield - Septic Tank  
Trenching, 8" up  
Industrial, Residential, Commercial  
CALL 475-7631

## WANT ADS

CALL NOW  
SAVE \$\$\$  
Greenwood

for  
Siding - Remodeling  
FREE ESTIMATES  
Call  
Chelsea 475-2400

HOUSE FOR SALE in Stockbridge  
area, 6-room house, on 2 1/2 acres.  
Full basement, gas heat in Stock-  
bridge area. Call 784-4867 after  
3:30 except on week-ends.

## SPECIAL OF WEEK

1970 Buick Riviera 2-dr. Hardtop  
20,000 miles. Showroom new  
\$3395

## Real Nice Used Cars

1972 Olds 98 4-dr. hardtop, air  
cond., vinyl top. Nice car. \$3895  
1972 BUICK LeSabre Custom 2-dr.  
hardtop, air cond. \$3495  
1972 Olds Cutlass Supreme 2-dr.  
hardtop, air cond. \$3395  
1972 PONTIAC Grandville 4-dr.  
hardtop, air cond. \$3695  
1972 Opel 4-dr. sedan, auto trans.  
Sharp. \$1995  
1971 BUICK Centurion 2-dr. hard-  
top, air cond. \$2895  
1971 Buick LeSabre 2-dr. hardtop,  
air cond., vinyl top. Sharp. \$2895  
1971 Olds Delta 88 2-dr. hardtop,  
air cond. \$2895  
1971 Chrysler 4-dr. sedan, air  
cond., vinyl top. Sharp. \$2495  
1970 Olds Toronado, air  
cond. \$2895  
1970 Olds Toronado, air  
cond. \$2895  
1970 Olds Vista Cruiser 3-seat  
air cond. \$2795  
1970 CHEVY Nova 2-dr. sedan,  
vinyl top, auto. trans., p.s. \$1895  
1970 PONTIAC LeMans 2-dr. hard-  
top, vinyl top. Sharp. \$1895  
1970 CHEV Nova 2-dr. sedan, 6-cyl.  
3-speed. \$1595  
1969 Lincoln 2-dr. hardtop, air  
cond. \$2295  
1969 Olds Delta 88 2-dr. hard-  
top. \$1595  
1969 Olds Luxury 4-dr. sedan,  
air cond. \$1995  
1969 Olds Delta 88 4-dr. \$1495  
1969 Chev Impala 2-dr. hardtop. \$1395  
1969 Ford XL 2-dr. hardtop \$1095  
1969 Ford LTD station wagon \$1295  
1968 Olds Toronado, air cond. \$1495  
1968 Olds Cutlass Supreme 2-dr.  
hardtop, air cond. Sharp. \$1495  
1968 Chev Impala 4-dr. sedan \$895  
1967 BUICK LeSabre 4-dr. hard-  
top, 38,000 miles. \$895  
1966 Buick LeSabre 4-dr. hardtop \$595  
1966 MERCURY 4-dr. sedan, air  
cond. \$395

## SPRAGUE

Buick-Olds-Opel, Inc.

Phone 475-8864  
1500 S. Main St., Chelsea

FOR SALE—Trombone, school re-  
quired brand. Call 475-7329.

## WANT ADS

ROBERT A. ALDER, licensed  
contractor. Residential building,  
remodeling. No job too small.  
18200 Boyce Rd., Gregory, Mich.  
48137. Phone 498-2539.

A fine selection of  
New and Used Cars

for immediate delivery

Harper Pontiac  
Sales & Service  
475-1306  
Evenings, 475-1608

FOR SALE—'63 Volkswagen in  
good running condition, 475-2766.

## USED CARS

and TRUCKS

BOUGHT and SOLD

KETO, INC.

8080 Grand  
DEXTER  
Phone 426-4535

## Sylvan Township

15-ACRE parcel and a 30-acre par-  
cel, Chelsea schools. Excellent  
building location.  
List your property with us for fast  
efficient service.

R. D. MILLER  
REAL ESTATE

Real Estate Broker  
475-7311  
15775 Cavanaugh Lake Rd.  
Chelsea, Mich.

REAL ESTATE  
FOR SALE

COUNTRY RANCH—Just 4 years  
old, 3 bedrooms, 1 1/2 baths,  
glassed and screened patio, large  
garage. Fishing and swimming  
privileges. \$37,500, terms.

3-BEDROOM RANCH—Cathedral  
ceiling in living room and dining  
room. Built-in range, dishwasher  
and disposal. 1 1/2 baths, full base-  
ment with finished rec. room,  
screened patio, attached garage.  
Priced at just \$38,000. Easy to fi-  
nance.

ONE ACRE building site. Wooded.  
Scenic view. Don't miss it. Also  
a smaller lot with swimming privi-  
leges.

CLARENCE WOOD  
BROKER

646 Flanders St.  
Phone 475-2033

CALL FRANK for all your carpet  
cleaning jobs, morning or week-  
end. Needs only 3 hours to dry.  
Only 10¢ per square foot. Phone  
now for free estimate, 761-4328.  
All work guaranteed.

## WANT ADS

REDWOOD DECKS by a deck ex-  
pert. We build fast, no mess, top  
quality, reasonable price, free es-  
timate. The unusual is no prob-  
lem to us. Quality craft, 426-8274,  
fully licensed.

## ANTIQUES

WANTED TO BUY

Single items or complete house-  
holds.

Let us help you clean out your  
attic, basement, or other stor-  
age areas.

We can also help you handle your  
estate. References will be pro-  
vided.

## House of Antiques

8081 Main St., Dexter  
426-8482 or 426-8888  
Call any time

## THE LITTLE

## FLOWER SHOP

3451 Waltrous Rd., Chelsea  
Phone GR 5-8508  
We Deliver and Wire  
Flowers, Corsages, Arrangements  
and Plants.  
Weddings and Funerals.

## G. G. HOPPER

Building Contractors  
Gregory 498-2148

## Pine Haven Saddlery

4534 Dexter Townhall Rd.  
Phone Dexter 426-4268  
Complete line of English and  
Western equipment. 10% discount  
to all 4-H Club members.  
Store Hours: Mon.-Sat., 9-9  
Sunday, 10-9

## SOLID VINYL SIDING

SOLID VINYL TRIM  
Aluminum Siding-Aluminum Trim  
Aluminum Gutter Systems-Roofing  
HOME OWNERS - BUILDERS  
ARCHITECTS

For free cost comparison estimate  
Call or Write

D. EDWARDS & SONS  
5450 Conway Rd.,  
Chelsea, Mich. 48118  
Ph. (313) 475-2014  
or (313) 592-8488  
Local Wholesale Contracting  
Licensed - Certified - Insured

REAL  
BARGAINS

and  
lots of them.

1/3 - 1/2 and more off

DANCER'S  
BARGAIN FLOOR

1973 DIAL and STITCH, \$47.75—  
Left in layaway. Sewers stretch  
material. Comes with a walnut sew  
table. Beautiful pastel color, full  
size head, all built-in to Zig-Zag  
buttonholes, overcast. Makes fancy  
stitches and winds the bobbin auto-  
matically. Only \$47.75 cash or terms  
arranged. Trade-ins accepted. Call  
Psalanti collect 482-8822 9 a.m. to  
9 p.m. Electro Grand.

# SCHNEIDER'S GROCERY

CHOICE MEATS - FINE FOODS

1-LB. CRTN. UNITED DAIRIES

Cottage Cheese . . 39c

10-LB. BAG MICHIGAN

Potatoes . . . . . 89c

12-OZ. CANS

Coke . . . 12 pac \$1.49

Keyko . . . . . 3 lbs. 95c

12-OZ. PKG. AMERICAN

Cheese Slices . . . 69c

CHOICE

Rib Steaks . . lb. \$1.29

ECKRICH

Smoked Sausage

. . . . . lb. \$1.09

1-LB. CARTON LAND-O-LAKES

Butter . . . . . 73c

Awrey's Quality

Baked Goods

PIES - CAKES - ROLLS  
DONUTS - COOKIES - BREADS

Phone  
475-7600

Your Store for  
Alexander & Hornung  
Smoked Meats

121 S. Main St.  
We Accept U.S.D.A.  
Food Coupons

## Friend in Need

We serve your  
best interests  
with  
our best efforts.



WANT ADS

**Automotive Rust Proofing Cars and Trucks**

**Village Motor Sales, Inc.**  
IMPERIAL - CHRYSLER  
DODGE - PLYMOUTH  
Phone 475-8861  
1185 Manchester Rd., Chelsea  
Hours: 8 a.m. to 6 p.m.  
Tues. thru Fri. Until 9 Monday.  
9 a.m. to 2 p.m. Saturday

**BARN PAINTING**

For the lowest prices around.

Call

**Trens Enterprises**  
761-0655

**WANTED** — People interested in second or third income, part time in their own home. Earnings from \$100 to \$1,000 per month. For appointment phone 475-8875 between 4 and 6 p.m.

**WE WANT** someone in this area who has mechanical ability for sales and service. Earning opportunity is quite high on this job regardless of part-time or full-time. No investment. For complete information write C. E. Woodard, 526 Second St., Ann Arbor, Mich. 48103. An Equal Opportunity Employer.

C—ustom Built Homes  
O—h! We Remodel too.  
U—can count on us  
N—o Job Too Small  
T—rim Inside & Out.  
R—ough-in Only If  
Y—ou Want to Finish

S—iding Aluminum, 5" Gutters  
I—mmediate Attention  
D—ALE COOK & CO.  
E—stimates, Free

**BUILDERS**

Please Call  
475-8863

**DALE COOK**

FRENCH HORN, cornet and trombone for sale. For information, call 475-1128 after 3 p.m.

**Men's Work Clothes**  
BASEMENT  
DANCER'S

**WANTED** — Couples interested in second or third income, part time in their own homes. Earning from \$75 to \$500 a month. Call 682-4401.

WANT ADS

**LEHMAN WAHL**  
Land Appraisal  
Residential  
and Farm  
1700 West Austin Rd.  
Manchester, Mich.  
Area Code 313  
423-8886

**FOR REAL DOLLAR SAVINGS**  
be sure and see us before you buy any new or used car. Palmer Motor Sales, Inc. Your Ford Dealer for over 50 years.

**REPAIR SERVICE** for household refrigerators, freezers and garbage disposers. Call Bill, 428-8314.

**HILLTOP, INC.**

Septic tanks: 600 gal. to 2,000 gal., and drain fields, installed to county code. Basements: road building, trenching, 12" and up. Buried oil tanks: 300, 500, and 1,000 gal. Trucking, stone, road gravel, and top soil. Estimates and reasonable rates. Licensed, bonded and insured.

1414 South Main  
Chelsea, Mich.  
475-2949

**SHOP FOR SPRING**  
The Selection  
Is Great  
DANCER'S

**GARDEN SUPPLIES**

**BULBS** —  
—Gladioli  
—Dahlias  
—Tuberous Begonia

**ROOT STOCK** —  
—Carnation  
—Cushion Mum  
—Fox Glove  
—Bleeding Heart

**PEAT POTS**  
PEAT STARTING BLOCKS  
PEAT MOSS  
MILORGANITE  
BONE MEAL  
ROSE FOOD  
ORCHARD SPRAY  
GARDEN FERTILIZER  
DRICONURE  
GARDENING TOOLS  
ORTHO INSECTICIDES

**Chelsea Hardware**

**LARGE FAMILY** desires 3-4 bedroom home. House must enjoy children. \$200-\$250 per month. Seady worker, with references. Write: 713 Henry, Ann Arbor 48104.

WANT ADS

**FORMAL WEAR**

**RENTAL SERVICE**  
—Weddings — Special Events  
6 different colors

**Foster's Men's Wear**

**NOW Full Time Complete Body Shop Service**  
Stop in For An Estimate

**PALMER FORD**  
222 S. Main St.  
475-1301

**FOR RENT** — Fair Service Center for meetings, parties, wedding receptions, etc. Weekdays or weekends. Contact John Wellnitz, phone 475-1518.

**HAMMOND ORGAN** teachers wanted to teach in their own homes. Call Grinnell Brothers, Ann Arbor, 662-5687.

**CLOGGED SEWER**  
**Reynolds Sewer Service**

We Clean Sewers Without Digging  
Drains Cleaned Electrically  
FREE ESTIMATES  
2-YEAR GUARANTEE  
Phone Ann Arbor NO 2-5277  
"Sewer Cleaning Is Our Business — Not a Side Line"

**CAR & TRUCK LEASING**. For details see Lyle Chriswell at Palmer Motor Sales, 475-1301.

**DIAMOND ROOFING**, reroofing and repainting. Roof louvers installed. Gutters cleaned. Licensed roofer. Call 475-1129.

**Fireplace Builder**  
Field stone mason, block and brick mason, tuck pointing.  
FREE ESTIMATES  
Call 475-8025 after 3 p.m.

**Patrick Grammatico**

**PATCHING AND PLASTERING**. Call 475-7489.

**CHELSEA**

**NORTH LAKE FRONT** — Beautiful year round 3-bedroom home. Ideal location, on the water, near golf course. Fireplace, family room, immaculate condition. Priced to sell.

**1 ACRE** — 3- or 4-bedroom home located in an area of 10 acre and 1 acre parcels, family room, fireplace, completely carpeted, 2-car garage, view of pond and trees. Chelsea schools, 15 minutes west of Ann Arbor. \$44,500.

**CAVANAUGH LAKE** — 160-ft. frontage, family room, fireplace. This year round home has a beautiful tree shaded lot and an excellent view of Cavanaugh Lake. Priced to sell at \$38,900.

**10 ACRES** — Quality 1-year-old 3-bedroom 2,200 sq. ft. brick ranch home, central vacuum, Anderson windows, 2 fireplaces, family room, dining room. Priced at \$59,900.

**SECLUDED PENINSULA** — Trees, wild life, birds, deer, geese, sand hill cranes. Beautiful natural fireplace, family room, 4 bedrooms on 10 acres located 20 minutes from Ann Arbor, Chelsea schools.

**VACANT PARCELS**  
IVEY RD. — 20 acres.  
NORTH TERRITORIAL — 38 acres.  
JERUSALEM RD. — 25 acres.  
WILLIAMSVILLE RD. — 10 and 15 acres.  
BETHEL CHURCH — 11 acres.  
DEXTER-CHELSEA — 218 acres.

**Frisinger Realtors**  
MULTI-LISTING  
Chelsea 475-3681

**Evenings:**  
Herman Koenn - 475-2618  
Toby Peterson - 475-2718  
Paul Frisinger - 475-3821  
Mary Ann Staebler - 475-1432  
Hope Bushnell - 475-7180  
Tina Cotton - 428-7143

**HELP WANTED**  
Sales Lady  
Downtown Dept. Store  
in Chelsea.  
Reply Box AP-20  
in care of Chelsea Standard

**O.E.S. RUMMAGE SALE** at Masonic Temple April 27, 9 a.m. to 8 p.m. April 28, 9 a.m. to 12 p.m. For pick up phone 475-1141 or 475-1808.

**GUITAR** and piano lessons. Openings available. Al Nait Music. Phone 475-7215.

WANT ADS

**ROBERT PATRICK** — Building and home improvements. Phone 475-1977.

**Gem Travel Trailers and Campers**  
PICK UP COVERS  
4" — \$100.00  
28" — \$179.00 and up

**Triangle Sales**  
Chelsea 475-4802

**BABYSITTING** in my country home. Cavanaugh Lake Rd. Ph. 475-8033.

**FENCE** — Chain link or redwood fence, all sizes. Material sold for your installation or we will install it. Call (517) 522-4387 for free estimate.

**WANTED** — People interested in 2nd or 3rd income in their own home. Earning from \$100 to \$1,000 a month. For appointment call 475-2555.

**HELP WANTED** — Factory workers. Female preferred. Employment office open 9 a.m. to 2 p.m. VESCO Corp., 738 State Circle, Ann Arbor.

**VACUUM CLEANERS** — Electrolux, authorized sales and service. James Cox, Manchester, Ph. 428-2981 or 428-8321.

**CAR RENTAL** by the day, week, end, week or month. Full insurance coverage, low rates. Call Lyle Chriswell at Palmer Motor Sales, 475-1301.

**Complete Body Repair Service**  
Bumping - Painting  
Windshield and Side Glass Replacement  
Free Pick-up & Delivery  
Open Monday Until 9  
CONTACT DON KNOLL  
FOR FREE ESTIMATE

**Village Motor Sales, Inc.**  
IMPERIAL - CHRYSLER  
DODGE - PLYMOUTH  
Phone 475-8861  
1185 Manchester Rd., Chelsea  
Hours: 8 a.m. to 6 p.m.  
Tues. thru Fri. Until 9 Monday.  
9 a.m. to 2 p.m. Saturday

**UPSTAIRS APARTMENT** for rent. Single or couples only. No pets. Call 475-8210.

**BEAUTIFUL** needed immediately at the Red Carpet Coiffures, corner of Baker and Hudson in Dexter. Clientele waiting. Apply in person.

**FOR SALE** — 70 Honda CB450. Ph. 475-2766.

**Quality Evergreens**

Spreading and Hicks yews, pyramidal and globe arbor vitae, Pfitzers, birch clumps, mountain ash. Flowering crab, Norway and crimson king maples. Dig your own. All State Inspected. Free Estimates.

**Faist's Evergreen Nursery**  
11362 Trist Rd., Grass Lake  
Phone (517) 522-4588

**HOUSE WANTED** to buy, in or near Chelsea. 3 or preferably 4 bedrooms. 1,500 to 2,000 sq. ft. Ph. 682-9802.

**FOR SALE** — Garden Mark riding lawn mower. Excellent condition. \$75. 475-8005.

**RESPONSIBLE SECRETARY** wishes to rent a 1-bedroom apt. 475-2650 after 5 p.m.

**WANTED** — Work for church youth group. We do almost anything. Call 475-2168.

**Now Is the Time: To Use Scotts**  
TURF BUILDER PLUS 2  
For Weed Control and Fertilizing Your Lawn  
HALT'S PLUS  
For Fertilizer and Crab Grass Control  
HALT'S PLUS  
WITH DANDELION CONTROL  
For Fertilizer, Crab Grass and Weed Control

**Chelsea Hardware**

**SALE**  
Quantity of  
BETTER DRESSES - JUMPERS  
BLOUSES - PANT SUITS  
1/3 OFF  
ALL SHOES  
Broken Sizes  
\$2.00 pr.  
KEDS  
Mostly small sizes.  
\$2.00 pr.

**Patty Ann Shoppe**  
Chelsea

**FOR SALE** — Chevy Biscayne '64, auto, 6 cyl., \$100. 475-7270.

**GUITAR** and piano lessons. Openings available. Al Nait Music. Phone 475-7215.

WANT ADS

**ELECTRICAL WIRING** of all types new and existing. Ph. 428-2241.

**EVINGER REAL ESTATE**, Alpine St., Dexter. Phone 428-5518.

**SEE US** for transit mixed concrete. Klump Bros. Gravel Co. Phone Chelsea 475-2530, 4920 Loveland Rd., Grass Lake, Mich. x404

**ROCKING M RANCH** Arabian and Morgan studs service. Young stock for sale. 8060 N. Territorial Rd., Dexter. 428-8110.

**ONE BEDROOM** apartment for rent, includes utilities. 605-4481, days only.

**HELP WANTED** — Reliable middle-aged woman for housecleaning, 2 days per week. Dexter. Chelsea area. Ph. 475-5670.

**TRAVEL TRAILERS** — 18-ft. and up; 1015 20' trailers. John R. Jones Trail Sales, Gregory, Mich. Phone 498-2655.

**WANTED** — Carpentry work, any type. Charles Romine. Ph. 475-7474.

**FOR SALE** — 1 acre building sites, Chelsea area. Phone 475-2823.

**STOCKBRIDGE**, 18 acres, commercial, on M-52, (517) 851-8144.

**WANTED TO RENT** of a guy standing hay for the coming season. Ph. 475-2771.

**PIANO TUNING**, Chelsea and area. Facilities for reconditioning and rebuilding. Used piano sales; reconditioned grands and verticals. E. Ecklund, 428-4429.

**ASPHALT PAVING**  
Driveways - Parking Areas  
Landscaping - Site Work  
PREVO EXCAVATING CO.  
(517) 851-8808 or (313) 453-1027

**BABY-SITTER** wanted in my home beginning May 15 for 2 a.m. to 4 p.m. five days a week. \$50 per week. 428-4997.

**CAKE DECORATING** can be fun. Learn at The Cake Shop School of Cake Decorating, Tecumseh. Class beginning May 1. Call 423-7738 for registration or information.

**WANTED TO BUY** — Old toy Lionel trains, any condition. Phone 426-4738.

**CHELSEA SCHOOLS** — By owner, 2,900 square ft. ranch. Included attached apartment or professional office, 6 acres, pond, trees, new barn. Mid 80's. Call 475-2543.

**SHOES FOR REPAIR** picked up and delivered every Monday at Parish's Cleaners, 113 Park St.

**GET YOUR POOL READY** for summer. Complete line of swimming pool chemicals, 10% discount on all over \$10.00. Underground pools installed, complete. Prices start at \$3,200. Hilltop Plumbing, Inc. Ph. 475-2949.

**HOME-SITTING** — Do you need a responsible married couple to take care of your home this summer? Please call 475-8857.

**HOME SITE**, 145 by 338 feet on north side of Old US-12 in first block east of Main St. A. Pommerening, phone 475-2787.

**FARM, FARM FARMS**

**GREGORY AREA** — 154 acres on blacktop road, remodeled farm house, new pole barn. LF1150.

**STOCKBRIDGE** — 78 acres, 4-bedroom home with two baths, many outbuildings. LF1349.

**NORTH OF PLAINFIELD** — 97 acres, on country road, 1/2 mile road frontage with older farm house. LF1327.

**PINCKNEY** — 5 acres, with new 3-bedroom home, family room with fireplace. Call for more information.

**CHELSEA** — 2-bedroom, on 1/2 acre land with large country kitchen, and paneled living room, \$18,000.

**DUPLEX** on M-36. Each unit rents for \$165 a month. LF1383.

**Howell Town & Country, Inc.**  
CARLIE WIEDMAN  
Local Representative  
Phone 878-3177  
426-3755 evenings

**DANCE**  
Sponsored by  
Chelsea Rod & Gun Club  
Saturday, May 5  
9 p.m. to 1:30 a.m.  
Music By  
JOE PRATER  
and  
"THE HURON VALLEY BOYS"  
Snacks - Set-ups - Ice  
and Lunch Furnished  
\$8 per couple  
For tickets and information  
call 475-7187

WANT ADS

**FOR SALE** — '69 Mustang Mach 1, 350, 4-speed, p.s., p.b., good condition. 475-3045.

**SPRING SPECIALS**

1964 VW	\$399
1964 Chevy 2-dr.	\$299
1965 Chevy convertible	\$299
1967 Dodge convertible	\$499
1968 Plymouth, automatic	\$749
1970 Nova, 4-cyl. stick	\$1395
1971 Ford Bronco	\$2495
1971 Dodge van	\$1995
1972 Chevrolet wagon	\$2895
1972 Blazer 4-speed	\$3695

**Lloyd Bridges Chevy**  
Chelsea  
QUALITY - SERVICE - PRICE

**BLEMISHED DOOR SALE!**

**C&C SALE**

14"x6"x1"x1" Birch int.	\$12.75	\$6.88
18"x6"x1"x1" Birch int.	\$13.45	\$6.73
20"x6"x1"x1" Birch int.	\$13.95	\$6.98
20"x6"x1"x1" Lauan int.	\$9.70	\$4.85
22"x6"x1"x1" Birch int.	\$15.00	\$7.50
22"x6"x1"x1" Lauan int.	\$10.95	\$5.48
24"x6"x1"x1" Birch int.	\$15.00	\$7.50
24"x6"x1"x1" Lauan int.	\$10.95	\$5.48
26"x6"x1"x1" Birch int.	\$15.00	\$7.50
26"x6"x1"x1" Lauan int.	\$10.95	\$5.48
28"x6"x1"x1" Birch int.	\$16.20	\$8.10
30"x6"x1"x1" Birch int.	\$17.30	\$8.65
32"x6"x1"x1" Lauan int.	\$12.10	\$6.05
34"x6"x1"x1" Birch S.C. ext.	\$29.75	\$14.88
28"x6"x1"x1" Birch S.C. ext.	\$27.75	\$13.88

**Chelsed Lumber Co.**

**FOR SALE** — Cornet (musical instrument) good condition, \$100. Call 475-3562 after 4 p.m.

**SECURITY GUARDS**  
Chelsea, Manchester  
Whitmore Lake areas.  
Phone 761-5315  
for appointment,  
or apply at  
290 S. Wagner Rd.  
Ann Arbor.

**SANFORD SECURITY SERVICE, INC.**

**LOST DOG** — Reward for information about miniature, apricot poodle, 4 months old. Yellow collar with 2 bells. Disappeared from Buchanan St. April 19, about 4 p.m. Phone 475-7476.

**ALCOA ALUMINUM SIDING** specialist. Michigan since 1938. All exterior wood covered. Beautiful look - Insulation - Maintenance free. William Davis, 683-6855.

**APARTMENT FOR RENT** in Chelsea. One bedroom, carpeted, stove, refrigerator, central vacuuming, air conditioning. No pets, no children. Phone 1-474-8552.

**SPECIAL** — Ceramic tile bath, 4'x8', 4 high, materials and labor. \$179. (1) 488-4615.

**REDUCE** excess fluids with Fluidex. Lose weight with Dex-A-Diet capsules, at Chelsea Drug.

**SKIN DISORDERS?** Try Toco-Derm Vitamin E cream, 1260 IV per tube, at Chelsea Drug.

**FOR SALE** — 16 cu. ft. General Electric upright freezer. 217 South St., Chelsea. Ph. 475-8107.

**See Us For Your Power Equipment**

**SIMPLICITY** —  
—Lawn Tractors  
—Lawn Mowers  
—Rototillers

**GARDEN MASTER** —  
—Lawn Mowers  
—Rototillers  
—Riding Mower

**CLYCLONE 8 h.p. RIDER**  
Special \$339.95

**BLACK & DECKER** —  
—Electric Mowers  
—Hedge Clippers  
—Grass Trimmers  
—Cordless Grass Trimmers

**DISSTON** —  
—Cordless Hedge Clippers  
—Cordless Grass Trimmers

**ROCKWELL** —  
—Cordless Hedge Clippers  
—Cordless Grass Trimmers

**Chelsea Hardware**

WANT ADS

**WILL DO BABYSITTING** in my home. Day shift. Have references. 475-3045.

**USED THROMBONE** for sale. In good condition. Reasonable. 475-3045.

**WANTED** — Live, mature night-crawlers. Must have Clitellum (band around body about 3 in. from head). Will pay 75¢ per 100. Call Ann Arbor Biological Center, 9790 Jackson Rd., Ann Arbor, Mich. 48106. Ph. 761-9800.

**THROMBONE FOR SALE**, in good condition. Phone after 4 p.m. 475-3045.

**HELP WANTED** — Female. GFI Friday to do general office work. Rockerete Products, M-52, 475-2848.

**1978 HOOVER**, \$22.50 — Nice 2-tone Hoover cleaner used just a few times. All cleaning tools included. Only \$22.50 cash. Call Ypsilanti collect 482-8822 9 a.m. to 9 p.m. Electro Grand.

**GERT'S** a gay gal — ready for a whirl after cleaning carpets with Blue Lustre. Rent electric shampoer, \$1. Dancer's.

WANT ADS

**TV** — G.E. black and white, 16 1/2" picture. Re-conditioned, \$60. 475-7015, evenings.

**WANTED** — Bantam hen and rooster. Young. Phone 475-1111.

**LOST** — Chelsea High School class ring. Blue stone with white stripes. MW initials. Class of '75. Lost in high school boys rest room on April 13. Please call 475-2835. Reward.

**FOR SALE** — Sofa, \$250; swivel rocker, \$100. Both new in January. 475-1849 after 4 p.m.

**MEN'S FULL SIZE BICYCLE**, good running condition, \$80 or best offer. 475-2228 after 5 p.m.

**BIKE FOR SALE** — Girl's 1971 Honda running 1 year old. Good condition. 475-2387.

**FOR SALE** — 12'x50' trailer, 2-bedroom, all carpet. 456-2719.

**GARAGE SALE** — Bargain prices! 3050 McKinley Rd., Friday thru Sunday, 9 a.m. to 8 p.m. Ph. 475-1793.

**MORE CLASSIFIEDS ON PAGE 6**

**TODAY'S THOUGHT**  
By LOUIS BURGARDT

Our bodies are well fed, but our souls are underfed when we fail to say, "We Thank Thee for our food." Even with the prayer at meal time, our souls starve from malnutrition when we ignore the constant hunger pangs, the silent suffering of starving multitudes.

Indisputable sad statistics show 4 out of 5 people on earth are underfed. Two out of three people on earth have constant, horrible hunger. They NEVER have had enough or get enough to eat. Unlike many of us who despair when food wants, likes and dislikes must be changed to overcome an overweight problem, these starving people have other reasons for despair. They have never once enjoyed the luxury of snitching snacks between meals. They can not even find the snacks and dare not mention meals. They have good reason to agree with Sophocles who wailed, "Better never to have been born at all."

Their predicament is by far the most serious problem in the world today. Proof will be shown here next week. Watch for it. **BURGARDT FUNERAL HOME**, 214 East Middle St., Chelsea, Mich. Phone 475-1551.

**SPECIALS**  
10-OZ. BOTTLES  
**Coca-Cola . . . . 8 pac 59c**  
Case of 24 \$1.69 plus deposit

**ECKRICH ALL-MEAT**  
**Hot Dogs . . . . 1-lb. pkg. 83c**  
NO. 303 CAN DEL MONTE

**Peas . . . . 2 for 45c**  
25-OZ. JAR MOTT'S

**Applesauce . . . . 2 for 71c**  
NO. 2 CAN DEL MONTE

**Crushed Pineapple . . . . 33c**  
We Have Bulk and Package Garden Seeds

**KUSTERER'S**  
FOOD MARKET  
DIAL 475-2721 WE DELIVER

**Safety**  
Your account insured  
to \$20,000.

**Availability**  
Get your money when you  
want or need it.

**Peace of Mind**  
Rest assured . . . with  
a growing Savings Account.

**Growth**  
With our earning power  
working for you.

**Open your account now!**

**CHELSEA STATE BANK**  
Member  
Federal Reserve  
System  
**FDIC**  
Member  
Federal Deposit  
Insurance Corp.

**You and Your Family...**

... one of the reasons we're in business  
... with life insurance that helps your family when you die, you and your family in financial emergencies or you when you retire. Check the facts with Charlie Foster or ...

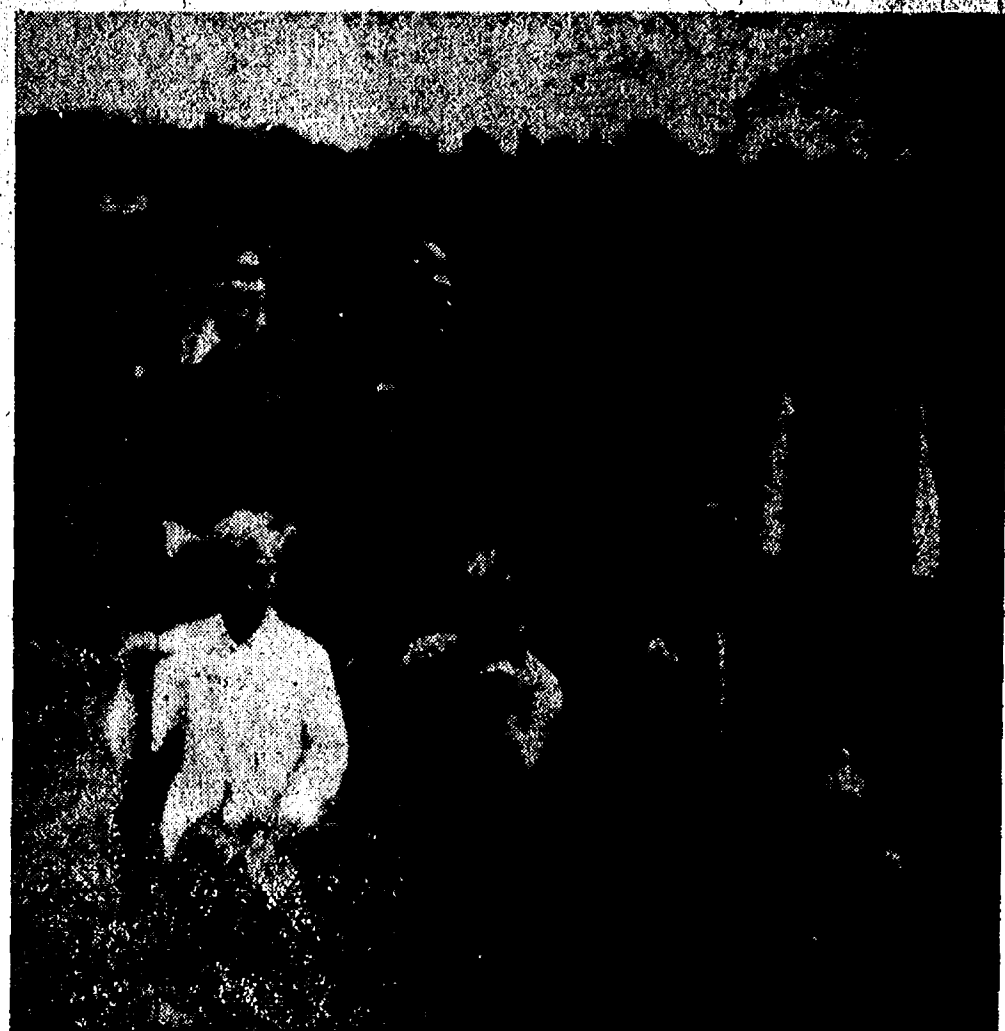
**DAVE ROWE**  
475-8065

**DOUG ROBESON**  
475-7389

**FARM BUREAU INSURANCE GROUP**

Farm Bureau Mutual - Farm Bureau Life  
Community Service Insurance - Community Service Acceptance





LITTLE LEAGUE WOLVERINES, pictured here, came out on top when battling with the other team from Mrs. Papowski's fourth grade for rule of the roost. The North school showdown ended in a 13-6 victory for the Wolverines over the Little League Muskies. The winners are shown here, standing, from left to right, David Parks, Jon Riemschneider, Mark Steinaway, Troy Hossailier and Niel Koch. In front are Kenny Elliott, Chuck Lane and Eric Picklik.

## WANT ADS

**YARD SALE**—Furniture, dining room set with table and 6 chairs; china cabinet with glass doors; large buffet; Magnavox color TV and stereo combination; beds, kitchen table and chairs; lots of small items. 142 South St., Chelsea, 475-1503. Sale starts Thursday at 12 noon and goes until Saturday at 12 noon. x45

**YOUNG MARRIED COUPLE** looking for country home or farm. 971-1559. x46

**FOR SALE**—12-string guitar, \$40. Call 475-1762, anytime. x46

## WANT ADS

**CLARINET** for sale. Good condition. For more information call 475-8910. x45

**DEPENDABLE TREE SERVICE**—Pruning, cutting and removal. Reasonable estimates. 426-4110. x48

**HOUSE FOR SALE**—Suitable to be moved. 2-bedroom. 525 N. Main, Chelsea. Phone owner 1-474-8552. x45

**HELP WANTED**—Truck driver preferably with transit mix experience. RockCrete Products, 475-2848. x45

### AFTER SCHOOL

"Mom, I'm hungry!" When you hear those familiar words, delicious milk is the best answer. It's a satisfying, healthful treat, and the youngsters love it. Be sure to keep plenty of milk on hand.

**HICKORY RIDGE FARM DAIRY**  
Stockbridge, Mich.  
Phone (517) 851-3000

## WANT ADS

**GARAGE SALE**—Friday and Saturday, April 27, 28, 8 a.m. to 5 p.m. at 222 Washington, Chelsea. Baby equipment, Kenmore sewing machine, wicker furniture, fabric shutters 11x36, and miscellaneous. x45

**250 ACRES** of farm ground for rent. Call (813) 475-8708. x45

**BEE-LINE** fashion manager needs assistant. Call 475-7075. x48

**FULL-TIME OFFICE GIRL** wanted for general office work with long-established local firm. Typing required. Good wages and fringe benefits. For appointment call 665-8811. x45

**\$50 REWARD**—"Snoopy" female beagle, black, white, and brown. Plain collar plus flea collar. Lost Jackson and Baker Rd. area Friday, April 13, 426-4832, or (1) 229-0787. x45

**BEDROOM SUITE** complete (light gray); console sewing machine, \$25; telephone bench; 2 children's desks; odd chairs; kidney shaped dressing table; strato lounge. Ph. 475-2105. x45

**RUMMAGE SALE**—Friday, May 4, 9 a.m. to 7 p.m. at Sylvan Town Hall, 112 W. Middle. Sponsored by Spaulding for Children. Donations received at the hall Thursday, 11 a.m. to 6 p.m. x46

**WOLVERINE PICK-UP** camper for sale. One year old. Sleeps two. Fully-equipped. 426-4559. x45

**LOCAL FIRM** needs person to drive truck for deliveries. Call 426-4683. x46

**HELP WANTED**—Man between 20 and 35 years of age to learn well drilling. No experience necessary. Cribble Drilling Co., Inc., Dexter, Mich. 426-4720. Call for appointment. x46

**FOR RENT**—Extra nice 3-room upper. Very clean, fully carpeted. Nice for quiet refined lady or couple. 475-7638. x45

**FOR SALE**—2 Early American chairs; 20" girls bicycle. Phone 475-1477. x45

**SPRING LUNCHEON**—Wednesday, May 3, 11:00 to 1:00, St. Barnabas church, Old US-12 West. Tickets \$1.50 available at door or call 475-8806. Delicious salads and casseroles. x45

**THANK YOU**  
We want to thank all of you who were so kind to us during the illness and following death of our brother and uncle, Alfred W. Titus. A special thank you to the doctors, nurses and staff of the Chelsea Community Hospital; to the Rev. Richard Clemans and the Staffan Funeral Home; and to our friends and neighbors for the food, calls and cards of sympathy and the beautiful flowers.  
Mrs. Frank Reed and family.

**THANK YOU**  
I would like to thank my friends and relatives for the visits, cards, phone calls, flowers, plants and fruit during my stay in the hospital and since my return home. It will always be remembered and appreciated.  
Jan Green.

**1000** personal address labels  
\$1.50

**The Chelsea Standard**

## THANK YOU

I would like to thank all my friends, neighbors, and relatives for the visits, flowers, cards and gifts. Special thanks to Rev. Schwarm and my daughters and their families for standing by me during my stay in the Community Hospital and my convalescence at home. Also to the Policeman and fireman for their help. Thank you.  
Faye Schiller.

## CARD OF THANKS

We wish to extend our heartfelt thanks and appreciation for the acts of kindness, messages of sympathy and beautiful floral offerings received from our kind friends and neighbors during the recent bereavement in the loss of our beloved husband, father, grandfather and great-grandfather. We especially thank the Chelsea Community Hospital, doctors, nurses, and aides and the Staffan Funeral Home for their services. A special thanks goes to Mr. and Mrs. Doug Carpenter, Mr. and Mrs. Leona Risner and Mr. Dorsie Carpenter. We also wish to thank the pallbearers who were so kind. May God Bless.  
The family of Dewey Salyer.

## IN MEMORIAM

Dear Charles and Son Albert, Daughter Mae Irene  
Some say time heals an aching heart.  
But no, it is not true.  
Eight long years have passed,  
Dear  
And our hearts still ache for you.  
Sometimes by your grave we wander,  
as we stand there alone;  
In our hearts there comes a longing.  
If only you could come home.  
He little thought when leaving home,  
He would return no more;  
That he in death, so soon would sleep,  
and leave us here to mourn his loss.  
He left a beautiful memory,  
a sorry too great to be told.  
But to us who loved and lost him,  
His memory will never grow old.  
Sadly missed by his wife, Mrs. Ova R. Slane, and nine children and relatives. Eight years March 6. Also we miss Albert J. Slane and Miss Mae I. Slane, eight years, Nov. 8, and Sept. 16, 2 years and 6 months.

## Girls Will Model Garments Friday At Weber's

It's one thing to model in front of parents and fellow 4-H members, and something else to wander through the dining room of an elegant restaurant. But for the poised 4-H girls who were among the 20 top Senior Miss models at Spring Achievement, it will be just another experience.  
Karen Kennedy and Lynette Schiller are the two Chelsea girls included in the exclusive group who will be modeling at Weber's Inn in Ann Arbor tomorrow, April 27. From noon until 2 p.m., the 14- to 18-year-olds will model two outfits they have made. One will be the award-winning garment they wore at Spring Achievement.  
The show, which may be enjoyed over lunch, is open to parents and the public. Weber's is buying lunch for the girls.

## Baseball Victory

(Continued from page one)  
The inning was closed with Ron Clark's perfectly executed suicide bunt to squeeze Nadeau home. Chelsea's final scoring flurry came in the fourth inning when the bases were loaded with walked batters. Doug Reed made it home on a wild pitch. The other two runs, Houle and Nadeau, came in on the shortstop's error.  
Chelsea's performance at bat was also noticeably improved. Monday, Daniels was good for two singles, one double and three RBI's. Houle contacted for a single and a double, for two out of three.

## GI BILL BENEFITS

When initially applying for GI Bill benefits, a veteran should include a copy of his Report of Separation (DD Form 214). This reduces processing time. Application should be made at the nearest VA office.

Napped fabrics ignite more readily than smooth finish fabrics.

## YES

WE ARE MAKING  
LONG-TERM FARM  
REAL ESTATE  
LOANS

**SEE US**

**Federal LAND BANK**  
Association

P. O. Box 1006  
Ph. 769-2411 3645 Jackson Rd.  
Ann Arbor, Mich. 48103



**POLISHED PEGGERS:** The Chelsea Area Cribbage Tournament, sponsored by the Jaycees, came to a conclusion Monday night at Beach Middle school, when these four finalists counted their cards in three rounds of three games each. Each finalist had an opportunity to test the mettle of the three others. The result was that Gary Radke, young-

est of the group, fared the best. His six wins and 295 points earned first place while Dave Reid came next. Whitey Guest took third, followed by Fremont Boyer. They are pictured here with their cribbage sets. From left, Dave Reid, Gary Radke, Whitey Guest and Fremont Boyer.

## SCHOOL LUNCH MENU

**Week of April 30 - May 4**  
Monday, April 30—Lasagna, buttered corn, bread, butter, ice cream, cookie and milk.  
Tuesday, May 1—Barbecue, buns, pickles, buttered vegetable, french fries, cherry desert and milk.  
Wednesday, May 2—Beef and shell macaroni casserole, cabbage salad, bread and butter, apple sauce, brownie, and milk.  
Thursday, May 3—Sloppy joes, buns, slice of cheese, buttered carrots, potato chips, peaches and milk.  
Friday, May 4—Oven fried chicken, whipped potatoes, country gravy, buttered spinach, tiny biscuits and butter, fruit and milk.

## Diabetes Association To Hear Representative Of Pharmaceutical Firm

The monthly meeting of the Ann Arbor Area Diabetes Association will be Wednesday, May 2, at 9:15 a.m. in the home of Mrs. Arthur Poinier, 5470 Miller Ave.  
Paul J. Lokar, Upjohn Pharmaceutical representative, Medical Science Services, will be the speaker.  
The public is invited.

## Gary Radtke Tops All Competition in Cribbage Tourney

After weeks of preliminaries, the four finalists in the Chelsea Area Cribbage Tournament got down to brass tacks Monday night. After three rounds of three games each, Gary Radke came out on top with six wins and 295 points.  
Dave Reid took second place. Although he also won six games, he slipped into the second slot because he had amassed only 274 points. Whitey Guest took third with four wins and 539 points, while Fremont Boyer was fourth after two wins and 725 points.  
Each of the finalists won a new cribbage board with a brass plate denoting their position in the finals of this year's Jaycee-sponsored event.

**LOSE UGLY FAT OR PAY NOTHING**  
Start losing weight today OR MONEY BACK. MONADEX is a tiny tablet that will help curb your desire for excess food. Eat less-weigh less. Contains no dangerous drugs and will not make you nervous. No strenuous exercise. Change your life ... start today. MONADEX costs \$3.00 for a 20 day supply and \$5.00 for twice the amount. Lose ugly fat or your money will be refunded with no questions asked by:  
**CHELSEA DRUG STORE**  
Chelsea - Mail Orders filled

## Underground Cable ...

(Continued from page one)  
passes overhead. Eventually, says Harry Kenworthy, area supervisor for Michigan Bell, all telephone lines will be out of sight, placed underground through the massive blocks of conduit one now sees by the side of the Chelsea-Dexter Rd.

**SALTY SITUATION!**  
Rivers annually carry some 4 billion tons of dissolved salt to the world's oceans.

Subscribe today to The Standard!

**Fred's Standard Service**  
889 S. Main, Chelsea  
Phone 475-2804

## Club and Social Activities

### LYNDON STUDY CLUB

The Lyndon Study Club met April 19, at the town hall, with Mrs. Sarah Shanahan, Mrs. N. Hall, and Mrs. D. Fuhrman as hostesses. The tables were decorated for Easter-keeping.  
Cup cakes, candy and other things were taken to the John George Home in Jackson on Friday. Russell Beeman received a donation of \$5 from the group to help finance his 4-H trip to British Honduras where he will be organizing 4-H clubs and acting as a good-will ambassador. He will leave June 11.  
The district meeting will be May 7 in Freedom Town Hall. Hostesses for the May meeting, May 17, will be Mrs. C. Hudson, Mrs. H. Hanewald, and Mrs. B. Boyce.  
Fifteen members and two guests attended the April meeting.

Founded in 1921, the University of Michigan's Fresh Air Camp near Pinckney offers a unique outdoor recreation and learning program for emotionally handicapped children. And it provides U-M's special education students, who serve as camp counselors, an informal setting for field training.

## Magic Mirror Beauty Salon

Open Tuesday thru Friday  
9 a.m. to 9 p.m.  
Saturday, 8 a.m. to 3 p.m.  
PHONE 665-0816

## PROBLEMS??

That's why we're here!  
Trust us. We're the guys who know the inside story ... and our shop is equipped for any car emergency. Service is our specialty. So bring your problems to us.

**TIRES - BATTERIES - ELECTRONIC TUNE-UPS**  
**BRAKE SERVICE - WHEEL ALIGNMENT - WRECKER SERVICE**

**Fred's Standard Service**  
889 S. Main, Chelsea  
Phone 475-2804

# BEEF BARN PACKING CO.

Phone (517) 782-3000

3095 COOPER ST.

JACKSON, MICH.

Monday thru Thursday

9 a.m. to 6 p.m.

Friday and Saturday

9 a.m. to 7 p.m.

Sunday

9 a.m. to 2 p.m.

## WATCH FOR EACH WEEK'S SPECIALS

WHOLE OR HALF

Slab Bacon ... lb. 69c

Pork Steak ... lb. 89c

Sliced Bacon . lb. 79c

Hot Dogs ..... 89c

BORDEN'S PRE-SLICED

American Cheese,

Hamburger

5-lb. brick .... \$4.50

10-lb. bag ... lb. 79c

## CUSTOM BEEF PROCESSING

6¢ lb.

Trucking \$5

Butchering \$5

WE SELL SIDES & QUARTERS

# JET SPRAY CARPET CLEANING\*

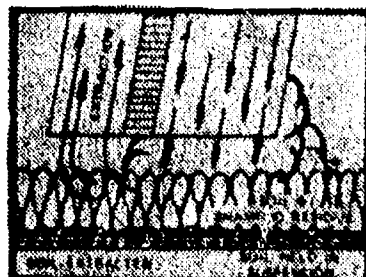
Clean your carpet the right way With the Most Modern Professional Carpet Cleaning Equipment.

*Our JET SPRAY Extraction System Will Leave Your Carpets Far Cleaner.*

## See the Soap and Soil Removed

Since we don't use detergents which trap the ground-in dirt your carpet can stay cleaner for a longer period of time.

*Remember: Good Carpeting Deserves Good Care.*



## SPRING CLEANING SPECIAL INTRODUCTORY OFFER:

### 1/3 OFF REGULAR PRICE

(FOR MONTH OF APRIL ONLY)

For A Free Estimate

Phone: 475-1509 or 761-3025 and ask for John Lixey



CHARGE IT ON BANKAMERICARD.

\*A Division of R.E.T.S. Painting, Inc.



### Jaycee Auxiliary Elects Officers For Coming Year

Maureen Lapanowski hosted the recent Jaycee Auxiliary meeting during which Vivian Yarger was congratulated for her fine presentation at the District meeting in Howell. President Judy Banks announced that Chelsea won the Travel Trophy at that meeting. The auxiliary moved to support Kirk Steinaway in the March of Dimes Walkathon, April 29. The auxiliary has given material to the Teen Center.

The Helping Hands files was divided among the members so that they may be brought up to date. New signs will be delivered. This must be done before a good program can be presented.

The members received thanks for their support of the Cribbage Tournament sponsored by the Jaycees. During the period of Sept. 1, 1972 to March 31, 1973, 1,935 meals were delivered to 34 persons through the Home Meals Service.

Elections yielded this slate of 1973-74 officers: Sue Call, president; Alberta Colby, vice-president; and treasurer; Maureen Lapanowski, secretary; and Vivian Yarger, director.

The Jaycee Auxiliary plans involvement in a horse show, youth program, the flouride program, and the state convention in the months ahead.

### GOD'S WILLING WORKERS

God's Willing Workers of the Chelsea Baptist church had their regular monthly meeting Monday night. The six ladies present worked on prizes for Vacation Bible school. Mrs. Marlene Brooks was hostess.

The group will meet again, May 1, at Mrs. Krieger's, to try to finish the prizes. They are asking all church ladies to help in the project.

Most fish and seafood contain 18 to 20 percent protein, making them an excellent alternate to meat.

### MISSIONARY GROUP

The program, "Sewing Beaten With Adam," was presented by Mrs. Blanche Pav of Grass Lake, at the April 16 meeting of the North Sharon Missionary group. The gathering was at the home of Mrs. Kaye Proctor.

As Mrs. Pav explained the need for different types of needlework through the ages, she displayed hand-made quilts.

Mrs. Nancy Patrick played her guitar and sang "Had It Not Been." The meeting ended with refreshments being served by the hostess.

May 21, the group will meet at the home of Mrs. Arthur Haab. There will be a gathering both at 1:30 and at 7:30 in the evening.

### VILLAGE BEAUTY SALON

LORETTA - SANDY - EULA  
CHERYL - JANICE - CAROL  
107 N. MAIN PHONE 475-1671

Beginning May 1, we will be closed Mondays during the summer.

OPEN TUESDAY THRU SATURDAY  
Evenings By Appointment



NEITHER RAIN NOR COLD could cool the enthusiasm at the Modern Mothers Child Study Club Easter Egg Hunt, Saturday. Club members and their families congregated in Pierce Park at 1 p.m., despite the dreary drizzle that threatened their plans. They wanted to offer a less crowded Egg Hunt than was found at the high school football field earlier in the day. While all the youngsters are winners at Easter time, the three shown here were official winners for their finds. They are, from left, Jennifer Rossi, Susan Riemschneider and Tylene Greenleaf.

### Club and Social Activities

**CHILD STUDY CLUB**  
Chelsea Child Study Club met Tuesday evening at the home of Mrs. Fritz Weber. Guests for the evening were Mrs. Duane Branch and Mrs. Ralph Owings.

The program for the evening was a panel entitled "Values." Members of the panel were Mrs. Art Steinaway, Mrs. Lynwood Noah, and Mrs. Charles Cox.

Following the panel discussion, members filled out a survey to discover their most important values.

Refreshments were served by the co-hostesses, Mrs. Robert Robb and Mrs. Arden Musbach.

The next meeting will be at the home of Mrs. Art Steinaway with a program entitled "Learning Difficulties."

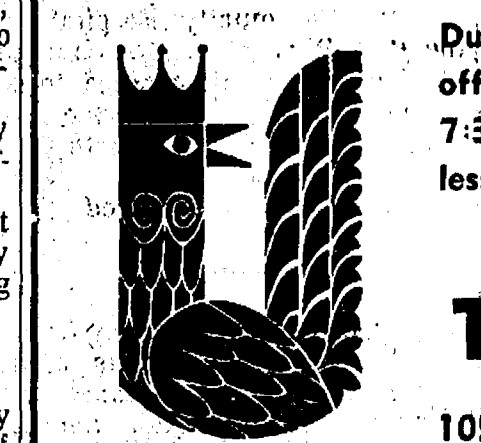
### MODERN MOTHERS

Modern Mothers Child Study Club met April 24 at the home of

Mrs. Vernon Otto with Mrs. Randall Johnson as co-hostess. "Introducing Children to Nature" was the topic of the program presented by Tom Hodgson, Waterloo Naturalist.

The next meeting will be May 8, a fun night, at the home of Mrs. Basil Greenleaf. Guests are invited.

**BIG BUSINESS!**  
The U. S. produces 32.5 percent of the world's automobiles.



Due to the great success of our last needlepoint class, we are offering it again. Classes will start May 3 (Thursday evening) 7:30 to 9:30 p.m. Fee is \$15.50 which includes six weeks of lessons and all supplies.

PLEASE CALL US FOR RESERVATIONS - 475-2512

### TAILFEATHER BOUTIQUE

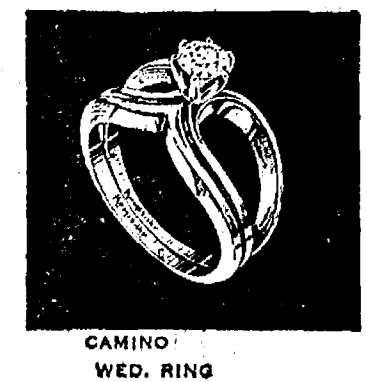
A FUN PLACE TO SHOP  
105 N. Main, Chelsea Phone 475-2512

You can't buy a finer diamond ring



Keepsake... a perfect diamond of pure white color and precise modern cut. See our beautiful collection of Keepsake rings, each hand-crafted in luxurious 14K gold.

**Keepsake**  
REGISTERED DIAMOND RINGS



### WINANS JEWELRY

Rings enlarged to show detail. Trade-Mark Reg.

You have more than one "mother"

Your grandmother, a favorite aunt, your godmother, your wife... or anyone who holds a special place in your heart. Remember each one with a thoughtful card on Mother's Day, May 13.

**CHELSEA GARD & GIFT SHOP**

116 S. Main Ph. 475-7501

## GAMBLES

110 N. MAIN ST.

PHONE 475-7472

# TRUCKLOAD SALE!



MORE OF ALL THE BIG THINGS YOU WANT!

**BIG SIZE!** Huge 224-Lb. Top Freezer—14.8 Cubic Ft. Refrigerator

### BIG FEATURES!

- Giant 21-cu. ft. space
- Completely frost free
- Thinwall foam cabinet
- Separate cold controls
- Meat keeper, 2 crispers
- Cantilever shelves
- 31" cabinet on wheels
- Magnetic door seals

SAVE \$81.95

**\$318**

Reg. Price \$399.98

COLOR COSTS NO MORE! Choice of avocado, harvest gold, copper-tone, white — all at one low price

Take home in the carton



GIANT 545 POUND SIZE

Full-Feature 15.28-Cu. Ft. Freezer for less money than any we've ever sold!

Reg. Price \$199.95

**\$158**

Take home in the carton

- Space-saving thinwall insulation
- 31.9-lb. storage basket, divider
- Convenient built-in defrost drain
- Adjustable cold control



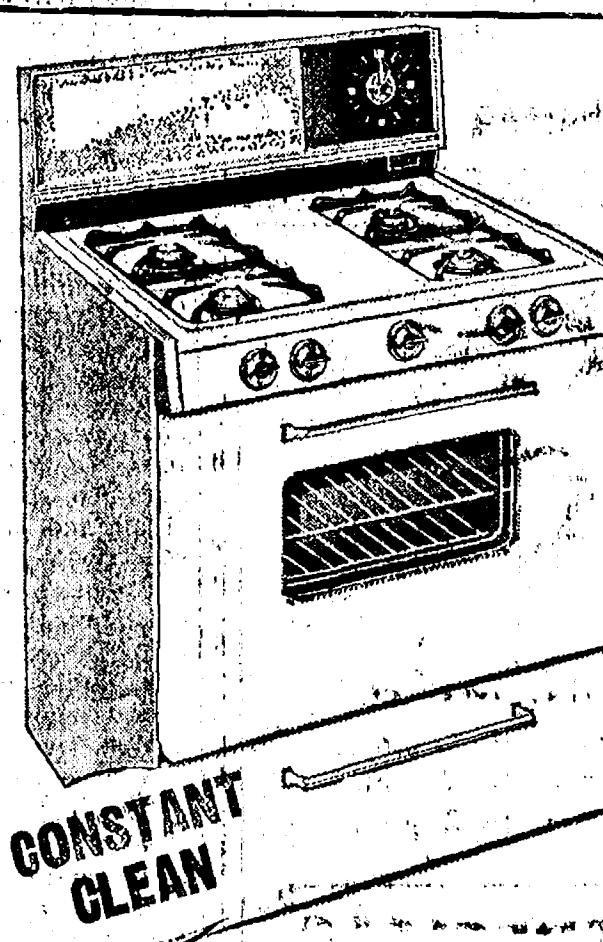
**CORONADO'S FINEST MICROWAVE OVEN**

Reg. \$379.95

**\$349.95**

Choice of Avocado, White, Harvest Gold

- Cuts your cooking time up to 75%
- Food gets hot—Kitchen stays cool
- Food splatters just wipe away
- 15-minute timer • 115V operation



### DELUXE 30" RANGE

GAS or ELECTRIC

With Constant Clean Oven

Lift-Off Top.

Cook 'N' Keep Warm

White, Avocado, Harvest Gold

**\$259.95**

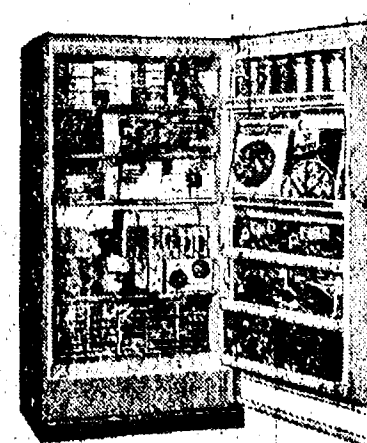
Reg. \$279.95

SAVE \$20.00

20" APARTMENT RANGE... **\$139.95**

30" GAS RANGE, Constant Clean **\$189.95**

30" ECONOMY GAS RANGE, Save \$20.00... **\$199.95**



**CORONADO 16 cu. ft. UPRIGHT FREEZE**

**\$188.88**

Reg. \$199.95

16 cu. ft. Frost Free **\$269.95**



**CORONADO REFRIGERATOR SPECIALS**

24 cu. ft. Side By Side

Reg. \$499.95 **\$449.95**

16 cu. ft. Side By Side

Reg. \$329.95 **\$289.95**

15.5 Refrigerator

2 Door Reg. \$279.95 **\$259.95**

### SHOP NOW and SAVE

Truckload Buying Power Makes Lowest Prices of the Year Possible

Save on RCA Color TV—Model Close-Outs

Save on SPEED QUEEN Washers and Dryers

QUANTITY PURCHASES MAKE THESE GREAT SAVINGS POSSIBLE — 3 DAYS ONLY!



## Community Calendar

The FFA will hold its annual slave sale, Tuesday, May 1, 8 p.m. in the high school agricultural room.

Dance sponsored by St. Mary's high school students, 7:30 p.m., Saturday, April 28, at St. Mary's school hall. Students 8th through 12th invited. Admission 75 cents. Live rock band. adv45

High school baseball District Tournament, here in Chelsea, June 2. Games begin at 10 a.m.

Regular meeting of Olive Chapter No. 103 on Wednesday, May 2, at 7:30 p.m.

Cavanaugh Lake and North Sylvan Grange with Mr. and Mrs. Lyman Adams, 114 N. East St., May 1, at 7:30 p.m. Bring cake, Jell-O, or sandwiches and your own table service.

Still time to order Community Band Calendars and listings by contacting Mrs. Kermit Sharp, 475-8744, or by stopping at the F & M Restaurant. Deadline is May 10. adv45

Friends of Library House Tour, Friday, April 27, 10 a.m. to 4 p.m. Luncheon 11 a.m. to 2 p.m. St. Andrew's church. Combination lunch and tour for senior citizens, \$3, tour and lunch for others, \$4. Baby-sitting sponsored by Marthas of St. Joseph church, 50 cents per family. Take-out luncheons. For reservations call 426-4442. All proceeds go to Friends of Library for 1972 addition. xadv45

Ray Spear, superintendent of the Northville Public Schools will speak on the "Year-Around School" April 26, at 7:30 p.m., in the high school library. You are encouraged to attend.

Trashathon, sponsored by St. Paul United Church of Christ Junior High Youth Fellowship, April 28, 10 to 4 p.m.

OES Rummage Sale, Masonic Temple, April 27, 9 a.m. to 8 p.m.; April 28, 9 a.m. to 12 noon. For pick up, phone 475-1141 or 475-1803. adv45

Saline Art Fair, May 6, from noon until 6 p.m., at the Community Center, Monroe St. If you are proud of your work and would like to sell some of it, contact Alice Walters, 319 Pleasant Ridge, Saline, for an application blank. Forms must be returned by April 21. The fair will be out-of-doors unless it rains. Sponsored by Saline Jaycee Auxiliary.

The non-denominational "Light of the World" prayer and healing crusade, every Friday night, 7:30, at the Rebekah Hall on Main St. Everyone welcome.

Chelsea Community Chest budget hearing, May 21, 22, in St. Paul United Church of Christ on Old St. at 7:30 p.m. The public is urged to attend.

Limoneers at the home of Mrs. Isabel Broderick on Thursday, May 3, at 12:30. Pot-luck dinner.

American Legion Auxiliary Mother-Daughter Banquet, Tuesday, May 1, at 8:30. Bring dish to pass and your own table service. Regular meeting will follow at 8 p.m.

Chelsea varsity baseball, Friday, April 27, with South Lyon, at home; Tuesday, May 1, with Milan, away.

Chelsea varsity track, Saturday, Albion Relays at Albion; Tuesday, May 1, Dundee, away; Thursday, May 3, South Lyon, home.

Young Homemakers at Chelsea Lanes, 9 a.m., Thursday, April 26. Regular Communication of Olive Lodge, 156 F&M, Tuesday, May 1, 7:30 p.m.

Sylvan Township Board meeting the first Tuesday of the month, at 7 p.m. at Sylvan Township Hall.

Washtenaw County March of Dimes Chapter's first annual Walkathon, Sunday, April 29, Register at 9 a.m. at Huron High school, Ann Arbor. Walk begins at 10 a.m. The 16-mile walk will be staged to collect money for the fight against birth defects. xadv45

Ann Arbor Saturday Night Singles Club dance for single adults 25 years and over, held at the YM-YWCA, 350 S. Fifth Ave., Ann Arbor, 9 p.m. to midnight, every Saturday. Live music, mixers and refreshments. For more information call 663-6068.

Singles 25 and Up: Join the Tuesday Night Singles Club at the YM-YWCA in Ann Arbor on May 1, for their Maypole Dance. Music by Frank Venice. Dancing from 9 to midnight.

Rogers Corners Farm Bureau Group Friday, May 4, at 8:30 p.m., at the home of Mr. and Mrs. Loren Koeniger. Please note date change.

Pap tests are free for all area women, Tuesday mornings, at St. Joseph Mercy Hospital, Ann Arbor. Call American Cancer Society office, 688-8857, for appointment.

May Fellowship Day, May 4, with a pot-luck dinner at 12:30 at the North Lake United Methodist church. Nursery will be provided. Those bringing children should provide a sandwich for them. Milk will be provided by the North Lake

## DEATHS

**Mrs. Harry Vickers**  
Methodist Home Resident  
Dies Friday at Age 90

Mrs. Harry (Jesse) Vickers of the Chelsea Methodist Home died April 20, at the age of 90. She was born in Holyoak, Mass., April 5, 1883, the daughter of Robert and Lucy Mitchell Sargent.

She was married to Harry Vickers Oct. 11, 1904. He died Dec. 11, 1933, and she came to the Methodist Home in May of 1971 from Belleville.

She is survived by two sons, Ellsworth of Ft. Lauderdale, Fla., and Robert of Walled Lake, and one grandson.

Funeral services were Monday, April 23, at 1 p.m. at the United Methodist Home Chapel with the Rev. Richard L. Clemens officiating. Burial was at Leonardson Cemetery, Pittsford. Arrangements were by Staffan Funeral Home.

**Henry M. Williams**

**Chelsea Woman's Father**  
Dies Tuesday in Indiana

The father of Chelsea's Mrs. Carolyn Williams, Henry Murrell Hughes, died Tuesday, in Memorial Hospital, Logansport, Ind. He was 74.

Surviving in addition to Mrs. Williams are two sons, Kenneth Hughes of Winamac, Ind., and Harry Hughes of Kittery, Me.; another daughter, Mrs. Betty Schodroff, Jr., of Logansport; one sister, Mrs. John Talbot of Buffalo, Ind.; and one brother, Ted Hughes of Monticello, Ind.

Three brothers and four sisters preceded him in death. Also surviving are three grandchildren and one great-grandchild.

Services were held at the Fisher Funeral Home in Logansport before burial at Buffalo Cemetery, Buffalo, Ind. The Rev. Carl Roark officiated.

Mr. Hughes, who was born April 7, 1899, in White County, Ind., was a retired employee of the General Telephone Co., in Logansport. His wife, Ruth Richcreek, died March 22, 1954.

Mr. Hughes was a member of the Fraternal Order of the Eagles and a 50-year member of the Electrical Workers Union.

**Euriskon...**

(Continued from page one) ministry also includes a column, "The Bible for Today," which he writes in the Michigan Christian Advocate.

He is the secretary of Evangelism in the Detroit Conference Board of Evangelism and chairman of the Conference Program Committee. He also serves as a board member on the Board of Directors of the Wesley Foundation, Eastern Michigan University, and as Euriskon Associate Program Director.

church. The program, featuring speakers from various volunteer programs, will start at 1:30.

American Legion and Auxiliary hospital equipment available by contacting Don O'Dell at 475-8249. Senior Citizen Run Nite every Friday evening at 7:30.

Lima Township Board meeting the first Monday of the month, 8 p.m. at the town hall.

Hot meal service brought to home of elderly or disabled. Available seven days a week to people living in the Village of Chelsea. For more information call 475-2923 or 475-8014.

Humane Society of Huron Valley has dogs and cats for adoption and to be reclaimed by their owners. Phone 682-5585, or go there from 9 a.m. to 5 p.m., daily; Sundays, 1 p.m. to 5 p.m., 3100 Cherry Hill Rd., 1/4 mile south of Plymouth Rd. at Dixboro.

Inquiries regarding the Chelsea blood bank may be directed to Harold Jones in the event that Mrs. Dudley Holmes is unavailable, or to Mrs. Pauline McKenna, American Red Cross in Ann Arbor, 871-5300.

Telephone Your Club News To 475-1371.

**Mrs. William Baxter**  
Dies Last Wednesday  
At Home in Lima Township

Mrs. Ida E. Baxter of 596 S. Steinbach Rd., Lima Township, died Thursday, April 19, at her home. She was 93.

Mrs. Baxter was born Nov. 15, 1879, in Whittaker, and was the daughter of Charles and Christine Zeeb Doss. She had been a resident of Ypsilanti since 1912, moving to Chelsea in May, 1972.

On Dec. 10, 1902, she was married to William Baxter in Stony Creek; he preceded her in death on Dec. 14, 1941.

Mrs. Baxter was a member of the First United Methodist church in Ypsilanti and a member of the Deborah Circle of the ESCS.

Survivors include: one son, Charles E. of San Bernardino, Calif.; one grandson, Richard W.; two great-granddaughters, Miss Clara Doss of Stony Creek and Mrs. Davi (Florence) Sundstrom of Saginaw. Several nieces, nephews and cousins also survive. Five sisters preceded her in death.

Funeral services were held at 1:30 Monday from the Moore Memorial Chapel with the Rev. Joseph J. Bistayl officiating. Burial was in Highland Cemetery.

**Mrs. Glenn Mathes**

**Former Rochester Resident**  
Dies at Methodist Home

Mrs. Glenn (Dorothy) Mathes of the Chelsea United Methodist Home died April 22. She had been born 69 years ago in Clinton, Ind., the daughter of Robert and Elyzula Harrington Gosnell.

She married July 16, 1925. Her husband, Glenn Mathes, died May 3, 1967. She came to the Home on April, 1968, from Rochester. She had been a teacher in the public schools in the Detroit area for many years.

Funeral services were Wednesday, April 25, at 11 a.m. at the Chelsea United Methodist Home Chapel with the Rev. Richard L. Clemens officiating. Burial followed in White Chapel Cemetery, Troy. Arrangements were by Staffan Funeral Home.

She is survived by two sons, Roger of Detroit, and Robert of Sunnyvale Calif., and one daughter, Mrs. Ruth McDonald of Rochester.

## Chest Fund Campaign Head Named

Mrs. Robert Riemenschneider of 125 E. Middle St., has agreed to take on the responsibilities of Chelsea Community Chest Campaign chairman this year. She accepted the position at the last Community Chest Board meeting, April 18.

Also at that meeting, James Liebeck reported on his two-day trip to Lansing where he attended budget hearings for the United Fund of Michigan. The Community Chest is interested in the organization's budget because local funds are contributed to it.

Liebeck was chairman of the finance committee before moving to the vice-presidential position vacated when Paul Frisinger became president. Now Bob Gaiser is the newly-appointed finance committee chairman. Jerry Susselhouse been appointed to the Chelsea Community Chest Board to fill Conrad Hafner's place.

Bob Kozma represented Chelsea at the District Red Cross budget hearing March 28. The Red Cross is another recipient of Community Chest funds.

Chelsea Community Chest budget hearings have been scheduled for May 21 and 22, in St. Paul's United Church of Christ on Old St. at 7:30. Community residents are encouraged to attend.

Decorator pillow styles with a casual look are popular. Tweedy looks, textured fabrics and modified stripes are all selling well. Top color choice in decorative pillows is gold. Green, browns, champagne and beige are big-sellers too.

## Penn Central Fined \$300 in District Court

Representatives of Penn Central Railroad came to 14th District Court, Wednesday, for one of its periodic court cases brought by the Village of Chelsea. The railroad was fined a total of \$300 for obstructing the flow of traffic through the village.

At issue were five tickets the railroad had accumulated in the last six months. The rail line is in violation of the law everytime it allows a train to block the village streets for more than five minutes.

The railroad pled guilty to three of the violations. Two others were dismissed on grounds that the trains had mechanical difficulties at the time.

The village is entitled to one-third of the fine levied by the court.

## Baseball Team

(Continued from page one) from its mistakes so that never again will it bring home a one run, six hit, two error score sheet. The irony of Tuesday's ifasco is that Dundee was not much better. They had two runs, three hits and one error.

Goose eggs showed up in all but the third inning for Chelsea. Dundee's two runs came in the second when Chelsea's right fielder dropped a fly ball. A man, who had walked to base, and the batter came in as a result of the error.

Chelsea's one score also came from a player who had walked originally. After stealing a base, a single by John Houle allowed him to go ahead home.

Both of Chelsea's pitchers, Howard Haselschwardt and Perry Johnson, who came in during the fourth, did a respectable job, according to the coach. "It was our mental errors that beat us," he repeated.

The coach predicted some shuffling of players before Wednesday's game. His hope was that those who had been sitting on the bench had learned more than those who had been on the field.

## Commendation

(Continued on page eight)

Specialist Five Gordon J. Beeman, United States Army, for meritorious service. Specialist Five Gordon J. Beeman distinguished himself by exceptionally meritorious service during the period Oct. 1970 to Nov. 1972.

"During this period he displayed a dedicated devotion to duty which, combined with his mature judgment and professional skill, contributed immeasurably to the accomplishment of the mission of the United States Army Courier Station, Washington.

"Specialist Beeman possesses leadership traits uncommon to a person of his grade and time in the service. The manner in which he demonstrated these principals, together with his expertise in every facet of his job, made him an invaluable asset to his activity.

"His quest for responsibility gained for him the assignment to the duties of Assistant Shift Supervisor. He performed the complex duties inherent in this position in an outstanding manner, always obtaining maximum efficiency and performance from his subordinates. This was a direct result of his exercise of sound judgment, initiative and his ability to supervise men.

"His professional excellence and significant achievement during the cited period were in the finest traditions of the military service and reflect great credit upon himself, the United States Army Courier Service and the United States Army."

Gordon is now employed at Farmer's State Bank in Munnith. He knew that he was being considered for the citation when he left the army, but he did not know the outcome of the deliberations until last week.

In lieu of the ceremony he would have had were he still in the service, Gordon received congratulatory letters from Major General Browers, the adjutant general, and his commanding officer at the courier station in Washington D.C.

## HELLER ELECTRIC & INSULATING

Now  
**Edison Trained**  
**Electric Heat**  
**Dealer**

Call us for estimates on all types of wiring.

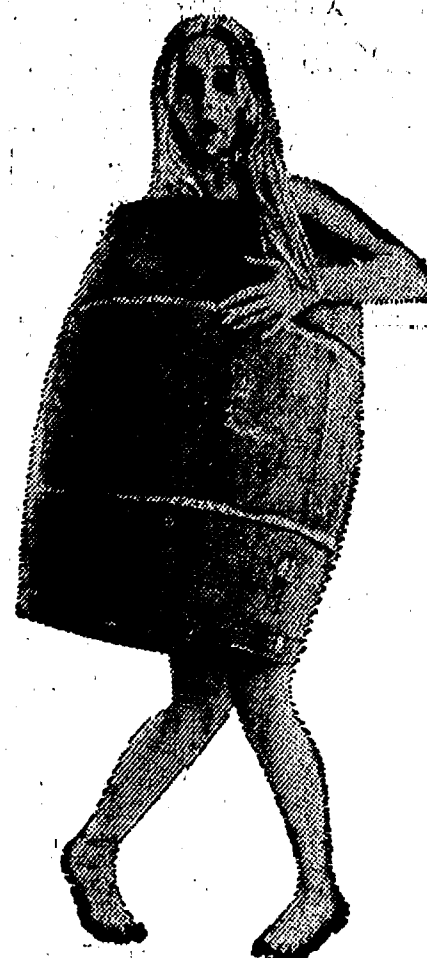
We insulate old or new homes with Thermatron insulation and install electric heating systems.

**CALL 475-7978**



**TOYMAKERS:** Smiley-faced pillows and small fabric mice surround these busy toymakers of Girl Scout Troop 442. To earn their Toymaker badge they must not only learn the art of making toys, they must give them away, and the troop decided Mott Children's Hospital in Ann Arbor would be a worthy recipient. They will travel to the hospital, April 30, bearing their toys, to take a tour and see slides of the facilities there. Shown here with the finished products are Julie Luck, Candy Walz, Lee Anne Owings, Patty Luck, Christine Kvarnberg and Ronna Trachet, co-leader.

## Standard Want Adds Get Results!



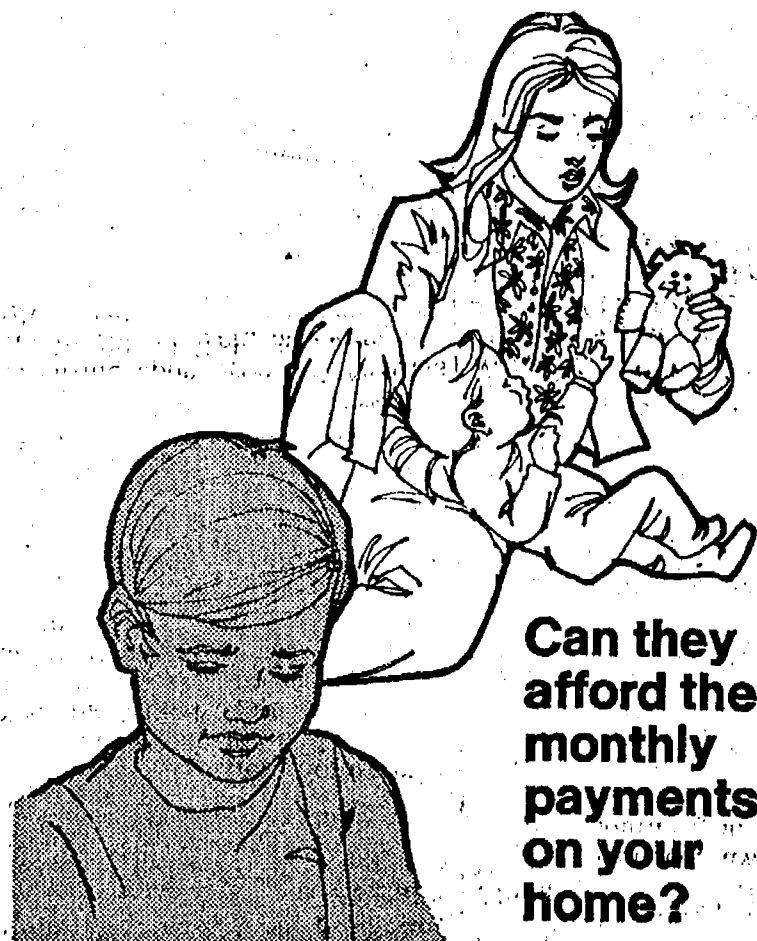
**WE'RE CAUGHT!**  
— WITH A DOZEN  
"LAST-YEAR" MODEL  
**POWER TOOLS**

Slight modifications in the latest models make the following units obsolete from a sales standpoint — But they're beautiful tools by a top manufacturer —Rockwell.

## BUY'EM NOW AT THE BOTTOM DOLLAR!

QUANTITY	ITEM	PRICE	
		SALE	REG.
1	NO. 60 SABRE SAW	<b>\$14<sup>19</sup></b>	\$19.99
1	NO. 106B BELT SANDER	<b>\$38<sup>73</sup></b>	\$59.50
1	NO. 75 PORTABLE SAW	<b>\$21<sup>50</sup></b>	\$29.99
1	NO. 5056A SHAPER Table Attachment - Your Power	<b>\$29<sup>59</sup></b>	\$39.95
1	NO. 31-200 DISC - SANDER Double-Arbor, w/o motor (makes perfect mitres) The handiest woodworking tool you can buy!	<b>\$29<sup>59</sup></b>	\$39.99
1	NO. 37-110 4" JOINTER With Stand & Dust-Chute and 1/2 H.P. Motor	<b>\$104<sup>39</sup></b>	\$159.98
1	NO. 43-111 SHAPER With Stand & 1/2 H.P. Motor	<b>\$166<sup>29</sup></b>	\$214.99
1	NO. 596A PORTABLE SAW	<b>\$63<sup>39</sup></b>	\$89.50
2	NO. 35 HEDGE-TRIMMERS	<b>\$14<sup>19</sup></b>	\$19.99
1	NO. 11-269 32" DRILL PRESS With Motor	<b>\$148<sup>99</sup></b>	\$199.98
1	NO. U-203 B & D DRILL 1/4" 2-speed	<b>\$10<sup>69</sup></b>	\$12.99

## CHELSEA LUMBER



Can they  
afford the  
monthly  
payments  
on your  
home?

Suppose your wife had to do it on her own. Chances are she couldn't afford those monthly payments and preserve your estate as well. Unless, of course, you plan for it now — with our "altogether" mortgage insurance. Because it has a fixed term and covers only the amount of your mortgage, it won't cost as much as you might think. Give us a call now. You don't have to buy a new house to be eligible. You're eligible anytime. Altogether Insurance — to help the family stay all together.

it's better  
**altogether**

**A. D. MAYER AGENCY, INC.**  
115 PARK ST., CHELSEA  
BOB BARLOW, AGENT  
PHONE 475-2030

**Auto-Owners Life Insurance Company**

## STEEL TOE WORK SHOES

6- and 8-inch  
By



**WOLVERINE**

**STRIETER'S MEN'S WEAR**

"The Place To Go for Brands You Know"





**1101 M-52 CHELSEA**  
**OPEN DAILY 7 a.m. to MIDNITE**  
**OPEN SUNDAYS 7 a.m. to 7 p.m.**

U. S. GRADE A WHOLE

**FRYERS** . . . . . lb. **49¢**

GRADE A <b>CUT UP FRYERS</b> . . . . . Lb. <b>53¢</b>	FRYER <b>DRUMSTICKS</b> . . . . . Lb. <b>79¢</b>
FRYER <b>THIGHS</b> . . . . . Lb. <b>79¢</b>	FRYER <b>BREASTS</b> . . . . . Lb. <b>79¢</b>
FARM-HOUSE SLICED <b>BACON</b> . . . . . Lb. <b>89¢</b>	HYGRADE REG. OR HOT ROLL <b>SAUSAGE</b> . . . . . 1-Lb. Roll <b>78¢</b>
HYGRADE LINK <b>SAUSAGE</b> . . . . . 12-Oz. Pkg. <b>88¢</b>	HERRUD JUMBO ALL MEAT <b>BOLOGNA</b> . . . . . Lb. <b>89¢</b>
CHOPPED SIRLOIN <b>STEAKS</b> . . . . . Lb. <b>\$1.29</b>	PARTS MISSING <b>CORNISH HENS</b> . . . . . 16-Oz. <b>69¢</b>
HYGRADE DRY SALT <b>BELLIES</b> . . . . . Pkgs. <b>89¢</b>	ALL-BEEF <b>HAMBURGER</b> 3 Lbs. or more Lb. <b>99¢</b>
MR. BOSTON <b>FISH STICKS</b> . . . . . 2 Lb. Pkg. <b>89¢</b>	FRESH FROZEN <b>TURBOT</b> . . . . . Lb. <b>79¢</b>

HERRUD SMOKED

**SEMI-BONELESS  
HAM**

Whole  
or  
Half Lb.

**\$1.09**

DOLE **FRUIT COCKTAIL** . . . . . 17-Oz. Can **29¢** SAVE 4c

HUNT'S **KETCHUP** . . . . . 32-Oz. **44¢** SAVE 13c

CHOCOLATE **NESTLE'S QUIK** . . . . . 2-Lb. Can **79¢** SAVE 6c

CARNATION INSTANT **BREAKFAST** . . . . . 6 Pak **59¢** SAVE 8c

APPIAN WAY **PIZZA MIX** . . . . . 4 13-Oz. Pkgs. **\$1** SAVE 32c

PURINA **DOG CHOW 50** . . . . . Lb. Bag **\$6.39** SAVE 90c

SWEETHEART LIQUID LIME **DETERGENT** . . . . . 32-Oz. **29¢** SAVE 30c

### ELF ECONOMY SALE

15-OZ. CAN <b>CUT GREEN BEANS</b> . . . . . <b>19¢</b>	15-OZ. CAN <b>PORK 'N BEANS</b> . . . . . <b>16¢</b>
15-OZ. CAN <b>CHILI STYLE BEANS</b> . . . . . <b>17¢</b>	WHOLE IRISH <b>POTATOES</b> . . . . . 2 15-Oz. Cans <b>39¢</b>
15-OZ. CAN <b>DARK RED KIDNEY BEANS</b> . . . . . <b>19¢</b>	SLICED IRISH <b>POTATOES</b> . . . . . 2 15-Oz. Cans <b>39¢</b>

### FRESHER PRODUCE BY FAR

DELICIOUS <b>APPLES</b> . . . . . 3-Lb. Bag <b>69¢</b>	FLORIDA VALENCIA <b>ORANGES</b> . . . . . Doz. <b>69¢</b>
VINE RIPE <b>TOMATOES</b> . . . . . Lb. <b>39¢</b>	MICHIGAN <b>POTATOES</b> . . . . . 10 Lb. Bag <b>99¢</b>
NON-PATENTED HYBRID <b>TEA ROSE</b> . . . . . <b>\$1.49</b>	NON-PATENTED <b>CLIMBER ROSE</b> . . . . . <b>\$1.49</b>

MICHIGAN

**PEAT  
MOSS** . . . . . 50-Lb. Bag **79¢**

WHITE GEORGIA

**MARBLE  
CHIPS** . . . . . 50-Lb. Bag **\$1.89**

U.S.D.A. CHOICE  
GRADE BEEF

Number of Cuts	NAME OF CUTS	NO. OF LBS.	PRICE PER LB.	TOTAL
8	3/4" SIRLOIN STEAKS	11.72	\$1.89	\$22.15
8	3/4" PORTERHOUSE STEAKS	8.07	2.09	16.86
4	3/4" T-BONE STEAKS	3.2	1.99	6.36
5	1" N. Y. STRIPS	4.6	2.99	13.75
	WASTE	10.24		
		43.90 lbs.		\$67.55

THIS IS WHAT YOU  
WOULD PAY AT  
REGULAR PRICES

**\$67.55**

THIS IS WHAT  
YOU PAY AT OUR  
SALE PRICE

**\$54.89**

## WHOLE BEEF LOIN SALE

**\$1.25**

**YOU SAVE**

**\$12.68**

**OR A WHOPPING**

**23.10%**

SEALTEST 1%

**LO-FAT MILK** . . . . . Gallon **88¢** SAVE 11c

BORDEN'S LITE LINE

**ICE MILK** . . . . . 1/2 Gal. **55¢** SAVE 12c

ASSORTED BANQUET FROZEN

**COOKIN' BAGS** . . . . . 4 5-Oz. Pkgs. **\$1** SAVE 16c

KRAFT PURE

**ORANGE JUICE** . . . . . 1/2 Gal. **69¢** SAVE 18c

16-OZ. MINUTE MAID FROZEN

**ORANGE JUICE** . . . . . **65¢** SAVE 14c

9-OZ. AUNT JEMIMA ORIGINAL

**WAFFLES** . . . . . **39¢** SAVE 10c

ELM TREE

**WHITE BREAD** . . . . . 2 pak **39¢** SAVE 14c

14-OZ. SEA PAC FROZEN

**FISH STICKS** . . . . . **19¢** SAVE 14c

BORDEN'S ELSIE

**STIX, 12-pak** . . . . . **59¢** SAVE 10c

SEALTEST LIGHT AND LIVELY

**YOGURT, pkg.** . . . . . **25¢** SAVE 10c

### NABISCO TRISCUITS

**49¢** SAVE 5c 8-Oz.

**PEPSI**  
**\$1.09**

8 Pack  
16-Oz.  
Bottles

### ALPINE BAKE HAUS SPECIALS

**ROLLS** . . . . . 6 for **39¢** SAVE 20c

**BUNS** . . . . . 8 for **39¢** SAVE 20c



52-OZ. VAN CAMP'S  
**PORK 'N BEANS** . . . . . **49¢**

100-CT. TENDER LEAF  
**TEA BAGS** . . . . . **89¢** SAVE 30c

48-OZ.  
**CRISCO OIL** . . . . . **99¢**

13c OFF LABEL, 22-OZ.  
**LIQUID JOY** . . . . . **39¢**

25c OFF LABEL  
**TIDE** . . . . . **\$1.14**

FRESHLIKE Cream or Whole Kernel  
**CORN** . . . . . 5 12-Oz. Cans **\$1**

FRESHLIKE  
**PEAS** . . . . . 4 14-Oz. Cans **\$1**





## LAFF OF THE WEEK

5% PER ANNUM

5% PER ANNUM

NO MINIMUM DEPOSIT

**MINIMUM**  
at Rate 5.35%  
**CERTIFICATE**

**WITHDRAW ANYTIME**  
With Interest Paid From Date of Deposit  
Effective Annual Rate 5.00%

**PASSBOOK SAVINGS**

*Specialists*





# BOWLING NEWS

## Senior House League

Standings as of April 23

Nam Quad Enterprises	88 1/2	43 1/2
Lloyd Bridges Chevrolet	82	50
Seltz's Tavern	81 1/2	50 1/2
Jim's Taxidermy	78 1/2	53 1/2
Chelsea Grinding	73	59
Sylvan Center	69	63
Robards Trucking	67 1/2	64 1/2
Mark IV Lounge	68	64
Schneider's Market	67	65
Massey-Ferguson	66 1/2	63 1/2
Chelsea Cleaners	66 1/2	63 1/2
Murphy's Barber Shop	59	63
Wolverine Race Club	58	74
Polly's Market	58	74
Ben's Arco Service	55	77
Bestline	53	79
Schneider's Builders	52	80
Holsworth Drive In	49	83

## Rolling Pin League

Standings as of April 24

Mopper Uppers	81 1/2	46 1/2
Spooners	80 1/2	47 1/2
Grinders	71 1/2	56 1/2
Dish Rags	69	59
Egg Beaters	67 1/2	60 1/2
Coffee Cups	58	70
Brooms	56	72
Kookie Kutters	54	74
Jolly Mops	49 1/2	78 1/2
Kitchen Kapers	46 1/2	81 1/2

## Guys & Gals

Standings as of April 19

Elliott's Milk Hauling	84	44
Halfmoons	80	48
Halfmoon Lakers	75	53
Village Motor Sales	70	58
Team No. 90	63	65
Grass Lake	59	69
Team No. 10	58 1/2	69 1/2
Team No. 11	54	74
The Downers	53 1/2	74 1/2
The Joneses	47 1/2	80 1/2
Team No. 9	45	83

## Junior Swingers

Standings as of April 21

Return of the Bully Bros	92 1/2	31 1/2
Hot Shots	84 1/2	39 1/2
The Rods	83	41
"74" Strikers	87	37
The Fancy Five	80	64
Spectacals	58 1/2	65 1/2
Revolutions	51	73
YBA Scorers	48 1/2	77 1/2
Team No. 8	45	79
The BBA's	28	96

## Chelsea Women's

Bowling Club

Tournament

High score in doubles event was 1,206 by Gail Kuhl and Doris Trachet.
450 series and over: R. Hummel, 552; P. Shoemaker, 539; P. Poertner, 523; N. Kern, 497; G. Kuhl, 491; J. Schleede, 484; S. Klink, 478; B. Fritz, 470; A. Bucholz, 470; D. Alber, 468; M. Sutter, 464; A. Fahrner, 460.
150 games and over: R. Hummel, 189, 192, 171; P. Shoemaker, 163, 220, 156; P. Poertner, 190, 173, 160; N. Kern, 177, 171; G. Kuhl, 156, 179, 156; J. Schleede, 198, 153; S. Klink, 170, 165; B. Fritz, 152, 154, 164; A. Bucholz, 191; D. Alber, 150, 168, 150; M. Sutter, 168, 166; A. Fahrner, 154, 159; T. Kenney, 166; D. Eisenman, 164; S. Ringe, 156; A. Boham, 154; P. Fitzsimmons, 150, 158; A. Eisele, 159; G. Penhallengon, 187; H. Morgan, 155, 158; A. Alexander, 161; R. Luto-vsky, 151; J. Salver, 178; J. Mont-gomery, 158; L. Behnke, 153; L. Bradbury, 151; B. Bush, 161; J. Rowe, 166; D. Verwey, 166; N. Kennedy, 172.

## Nite Owl League

Standings as of April 23

Steele's Heating & Cool.	82 1/2	49 1/2
Dault & Le Van Building	79	53
Cavanaugh Lake Store	77 1/2	54 1/2
Wahl's Oil Co.	74 1/2	57 1/2
Mark IV	71	61
Ted's Standard	67	65
Foster's Men's Wear	67	65
McCalla Mobile Feeds	66 1/2	65 1/2
Heller Electric	65	67
Chelsea Finance	64 1/2	67 1/2
Jack & Son Barbers	64	68
Ann Arbor Kirby Co.	63 1/2	69
Smith's Service	63	69
Pump & Pantry	61	71
A.M. Corp.	60	72
Stocum's Construction	55	77
Team No. 14	54	78
Spoilers	50	82

## Leisure Time League

Standings as of April 19

Unpredictables	81 1/2	46 1/2
Three Stooges	74 1/2	53 1/2
Misfits	72	56
Rug Rats	69 1/2	58 1/2
Mishaps	69	59
Elm Leaves	65	63
Bumps & Grinds	59 1/2	68 1/2
Ding-a-Lings	45	83
Moppetts	37	91

## Chelsea Finance Corp.

\$25 to \$1,500

For Any

Worthwhile Purpose

See or Call

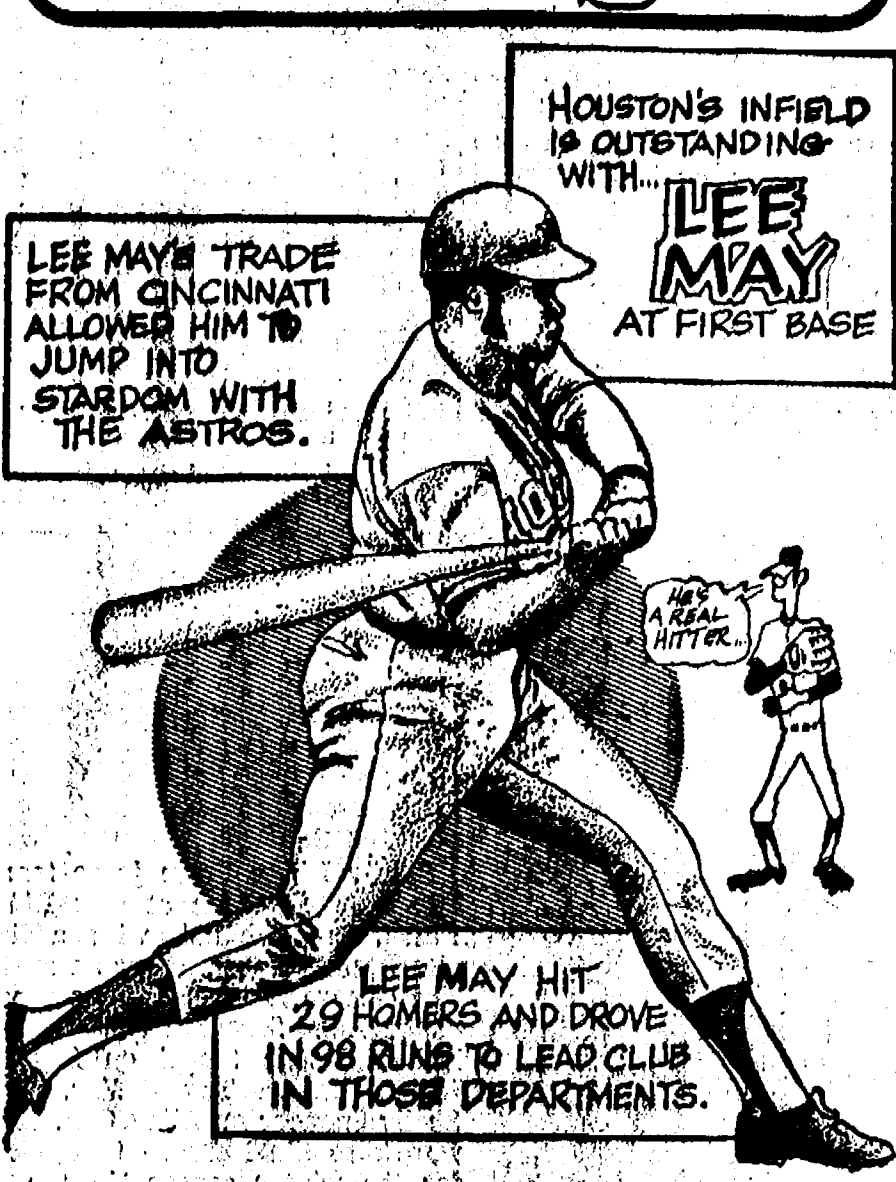
FRANK HILL

at 475-8631

111 PARK STREET

CHELSEA, MICH.

# SPORTS CORNER



## Junior House League

Standings as of April 19

Chelsea Lanes	144	80
A. A. Building Supply	135	89
Wolverine No. 2	132	92
Inverness Inn	127	97
Washenaw Engineering	124	100
Wolverine No. 1	117	107
3-D Sales & Service	116	108
Boyer Automotives	116	108
Smith's AAA Service	113	111
N. American Rockwell	108	116
Michigan Bell	103	121
Jiffy Mix	94	130
Dana No. 3	84	140
Frisinger Realty	83	141
Cavanaugh Lake Store	83	141

## Hi Point Mixed

Standings as of April 17

ZAP	714	71
Guess Who	701	72
Flat Tires	628	80
River Rats	590	87
Moving Violations	588	89
Alley Katz	571	96
Ding Bats	567	100
Ding A Lings	566	101
Holy Terrors	558	109
Cheetah Weat'h's	526	141

## Leisure Time League

Standings as of April 19

Unpredictables	81 1/2	46 1/2
Three Stooges	74 1/2	53 1/2
Misfits	72	56
Rug Rats	69 1/2	58 1/2
Mishaps	69	59
Elm Leaves	65	63
Bumps & Grinds	59 1/2	68 1/2
Ding-a-Lings	45	83
Moppetts	37	91

## Leisure Time League

Standings as of April 19

Unpredictables	81 1/2	46 1/2
Three Stooges	74 1/2	53 1/2
Misfits	72	56
Rug Rats	69 1/2	58 1/2
Mishaps	69	59
Elm Leaves	65	63
Bumps & Grinds	59 1/2	68 1/2
Ding-a-Lings	45	83
Moppetts	37	91

## Chelsea Finance Corp.

\$25 to \$1,500

For Any

Worthwhile Purpose

See or Call

FRANK HILL

at 475-8631

111 PARK STREET

CHELSEA, MICH.

## Charlie Brown & Snoopy's Friends

Prep Division

Standings as of April 21

Bulldogs	54	8
Good Guys	44	18
River Rats	35	27
Green Hornets	32	30
Pink Panthers	27	35
Wolverines	25	37
Woldcats	23	39
Red Barons	18	46

## Old Timers League

Standings as of April 20

Sanford Security Service	78	54
Nelson Realtors	75 1/2	56 1/2
Hartman Insurance	75	57
Sperntall's Marathon	72 1/2	59 1/2
Sportsman's Tavern	73	59
Bob & Otto Standard	72	60
Milan Screw Products	70	62
Deno's Pin Room	70	62
Colonial Lanes	68 1/2	63 1/2
Cloverleaf Lanes	68	66
Hotel Service	63	69
Team No. 18	62	70
Has Beens	61 1/2	70 1/2
Elms & Son	60	72
Merkel Furniture	57 1/2	74 1/2
Team No. 16	56 1/2	75 1/2
Team No. 14	55	77
Stein & Goetz	52	80

## Hi Point Mixed League

Final Standings, April 25

ZAP	741	71
Guess Who	719	72
Flat Tires	654	80
Weber Construction	638	87
Moving Violations	612	94
River Rats	608	98
Ding Bats	583	105
Alley Katz	581	107
Holy Terrors	576	112
Ding A Lings	575	113
Cheetah Weat'h's	546	141

## GIRL SCOUT NEWS

TROOP 98—

For Keep America Beautiful Week seven troops are going to be cleaning cemeteries. Then afterwards, our Troop 98 is going to Thompson's Pizza. We picked a camping committee to plan our trip. We also talked about fixing the Girl Scout tents. To end the meeting we played fruit-basket upset.

## TROOP 689—

We collected dues. Then we had treats Linda Durgon brought. We made flowers for our mothers and invitations for them to come to the Mothers Tea, May 9. Then we closed with taps.

### FISHERMAN'S CALENDAR

**APRIL 28**  
General trout opener.

**MAY 26**  
Black bass opener in all waters except Lake St. Clair and the St. Clair and Detroit rivers.

**MAY 31**  
Archery-spearfishing season on rough fish closes in certain streams throughout the state.

**JUNE 2**  
Muskegon fishing opens in Lake St. Clair and the St. Clair and Detroit rivers.

**JUNE 23**  
Black bass season extended to Lake St. Clair and the St. Clair and Detroit rivers.

**MAY 15**  
Opener for fishing northern pike and walleye in muskellunge except in Lake St. Clair and the St. Clair and Detroit rivers. (Muskellunge season in those waters gets under way June 2).

### TEACHER TOPICS

The year-round school—a controversial concept that is being tried in a small but growing number of school systems—has some advantages. For districts like Chelsea, which have an increasing enrollment and no space to put the incoming students, the year-round school might be the answer.

One plan, called the 45-15 plan, sends pupils home for vacations for at least 15 school days after 45 days of school. This seems to work in schools that have tried it. With pupils being in four staggered groups, 25 percent of the pupils would be on vacation, requiring less new facilities for the entire system. Also, many educators feel that the learning loss suffered by children over the long summer vacations would be greatly reduced.

An alternate proposal breaks the year up into five nine-week terms where both teachers and students are required to be in school for any four of the five terms. The advantages here are similar in relation to use of space, but this plan still allows for a summer vacation for those who desire it.

Some other advantages are: (1) the opportunity for families to take vacations in the season of their choice, (2) the chance for fathers to take their sons on lengthy hunting trips in the fall, and (3) the availability of a steady supply on teen-age babysitters who can stay out later on week nights.

There are disadvantages to this concept, such as installing air-conditioning in the buildings. However, with our system bulging at the seams for nine months and then being almost empty for three months, perhaps the year-round school is worth some consideration.

Chelsea Education Association.

### Mobil-Toons

By GLENN

"Wasn't he courteous . . . I can still hear his voice!"

We are always courteous!

### GLENN'S MOBIL SERVICE

1629 M-52 & I-94  
CHELSEA, MICHIGAN  
Phone 475-1767  
GLENN HEIM PROP.

### JOIN BOB LYONS at the Organ

### MARK IV LOUNGE

### Spring and Summer BOWLING LEAGUES NOW FORMING

WOMEN'S • MEN'S • MIXED

Call or stop in for reserved spots.

18 Astroline Lanes • Billiards & Air Hockey

MICHIGAN STATE LOTTERY TICKET AGENT

### CHELSEA LANES, Inc.

PHONE 475-8141

1189 M-52 CHELSEA

### STEEL SALE

### 4 STEEL BELTED

### For Only

### WHITE WALLS

### \$109<sup>95</sup>

Plus \$2.87 Fed. Tax on each G78x15 or \$2.85 Fed. Tax on each G78x14.

We Honor

BankAmericard, American Express, Discover, MasterCard, Visa, Club, Carlo, Blanche

### 2 Sizes Only

### G17x15 and G7814

### Free Mounting

Fully Guaranteed\* First Line Tires. Save \$37.85 over our Regular Discount Price.

for your convenience

AND Standard Oil Credit Cards

\*If failure occurs during the first 50% of original tread depth, the tire will be replaced FREE OF CHARGE for failure of tire construction OR road hazard.

### PALMER

222 S. MAIN, CHELSEA

PHONE 475-1301

### STEEL SALE

### 4 STEEL BELTED

### For Only

### WHITE WALLS

### \$109<sup>95</sup>

Plus \$2.87 Fed. Tax on each G78x15 or \$2.85 Fed. Tax on each G78x14.

We Honor

BankAmericard, American Express, Discover, MasterCard, Visa, Club, Carlo, Blanche

### 2 Sizes Only

### G17x15 and G7814

### Free Mounting

Fully Guaranteed\* First Line Tires. Save \$37.85 over our Regular Discount Price.

for your convenience

AND Standard Oil Credit Cards

\*If failure occurs during the first 50% of original tread depth, the tire will be replaced FREE OF CHARGE for failure of tire construction OR road hazard.

### PALMER

222 S. MAIN, CHELSEA

PHONE 475-1301





## NORTH ELEMENTARY SCHOOL NOTES

**FIRST GRADE—**  
Teachers: Mrs. Peebles, Mrs. Steln, and Mrs. White  
Our first grades are excited about springtime. Mrs. Winkle's 5th grade has had an incubator full of eggs and five of them hatched this week. The first graders enjoyed seeing the new baby chicks. We are going to start a unit on seeds.  
Mothers—watch for a special invitation coming soon.  
March birthdays were: Robin Solystiak and Carine Brown.  
April birthdays were: Jamie Cameron, Steve Kapolka, Billy Milkey, Charles O'Bryan and Keny Smith.

**SECOND GRADE—**  
Teacher: Mrs. Walton  
Amy Hume is the only April birthday in our room.  
Now that spring is here some of us are riding our bikes to school. Our weather has been very unpredictable, we don't know what to wear for recess.  
We are learning how to carry and borrow in our math class. We are also learning cursive writing. We are planting seeds now that we hope will be pretty flowers some day.

We are looking forward to the Easter Bunny's visit.

**Teachers:**  
Mrs. Bower, Mrs. Michelson, Mrs. Packard, Mrs. VanBlaricum  
Easter is Here!  
Did you see the kindergarten children in the Easter Parade? They wanted to show you their lovely creations.

We are looking for signs of spring; the maple trees are flowering, Kelly brought cray fish and minnows, Beth brought in a garter snake, Phoebe brought in a baby lamb, Tonya brought in some caterpillars. Mrs. Cianciola brought in her nanny goat and three kids.  
We won't be going to a farm this year so we are hoping that you will bring in animals to us. Notes will be sent home.  
We hope to be walking to the library this week. It is always fun to have a story there with our friends!  
We took a big bag of Easter things home. Many thanks to the mothers for all of their help and contributions. The egg tree that Anton and his mother painted for us was covered with decorations. Happy Spring!

## Lyndon Board Okays Plan for Subdivision Maps

Thomas Lewis, Nancy White, Doris Fuhrmann, Norman Kaiser and Thomas Lancaster attended the regular Lyndon Township Board meeting this month. After the notes from the previous meeting were read and approved, Supervisor Lewis requested that subdivision maps be made available. They may be obtained at the Register of Deeds for a price of \$18.

The board decided to set up a Federal Revenue Sharing file at the clerk's home. It was also decided that aerial maps of the township are not necessary.

Payment of the mileage was discussed and it was decided that the mileage will be turned in on a monthly basis.

After it was moved to pay the March 27 bills, amounting to \$2,379.79, the board discussed the advisability of securing a safety deposit box. Certificates of deposit were also discussed.



## CUB SCOUT NEWS

### DEN 1, PACK 415—

The cubs of Den 1, Pack 415 held their regular meeting, Thursday, April 19, at the home of their Den mother, Mrs. George E. Atkinson. All the boys were present.

The meeting opened with the flag ceremony. Mrs. Atkinson had an Easter basket and colored eggs for each of us. Mike Bice and Jeff Ratzloff told a folklore story while we worked on the marble bags we started at the last meeting. We are all looking forward to the Pinewood Derby race that will be held soon.

John Greene, scribe.

Telephone Your Club News To 475-1371.

## Baseball Team Trampled By Lincoln, Novi

Defeat, as bitter as the taste of chewing tobacco, stayed with the Chelsea varsity baseball players last week. Both games, April 17 and April 20, were lost before they were begun.

Tuesday's contest, which was not cancelled after all, saw Lincoln jam six runs down Chelsea's throat in the top of the second inning. Chelsea's one run in the first and a second one in the bottom of the sixth constituted feeble challenge. Lincoln added four more in the fifth and an additional two for good measure in the sixth. The Raisers' 12 runs, nine hits and one error put Chelsea, with two runs, six hits and four errors, to shame.

The key error came in the second inning, compounding the embarrassment of four consecutive walks. The error came on a double which was followed by yet another walk and then Ben Arheim's grand slam brought every-one home.

"We had a hard time finding the plate," said Coach Carl Genske, describing the pitching that walked 13 Lincoln batters.

Doug Reed started on the mound and was replaced in the second inning by Perry Johnson. Howard Haselschwardt came on in the fifth and Glenn Alber played out the sixth and seventh innings.

The only lot of pride Chelsea could squeeze out of the experience came from John Mann's two-for-four and Jeff Daniels' two-for-three at bat.

The Bulldogs were ready to give it another go, Thursday, only to be stood up by Novi. The tardy team added injury to insult by arriving Friday and humiliating Chelsea, 16-7.

Nearly two-thirds of Novi's runs came in the top of the first. "The first three batters should have been out," said the coach, pointing to the error during the first play and the slow fielding of the second and third. The second and third batters drove the ball right at the pitcher who got it off too late in each case to make the out.

"Then the bottom fell out," said the coach. Five straight hits followed making the score 10-0 before Chelsea even got up to bat.

Chelsea was given momentary relief when back-to-back homers brightened the bottom of the first inning. Mike Nadeau and Craig Alter were responsible for that display which unfortunately fizzled all too soon. Ron Clark was a good for two-for-three at the plate but everyone else had little luck.

Novi notched three more runs in the second while Chelsea countered with one. Novi scored once again in the third and brought two more men home in the fifth. Chelsea's remaining runs were in the fourth (two), the fifth (one), and the bottom of the seventh (one).

The game concluded with 16 runs, 17 hits and one error for the winners, and seven runs, seven hits and nine errors for the Bulldogs. Pitching for Chelsea were Doug Reed, Perry Johnson in the first inning with John Tandy replacing Johnson in the sixth. Craig Alter was catcher until Mike Nadeau replaced him in the fourth.

Needless to say, the coach is not happy with the losing streak, but by his own admission, he's optimistic. "We're a young team and we make mistakes, but hopefully we'll keep learning from our mistakes," he said. "It's hard to come back after 10 runs in the first inning, but we're young and learning."

Michigan leads the nation in number of state parks and prepared campsites. Michigan has 75 state parks, three national forests and more than 150 municipal camping parks. Altogether, they have more than 15,600 prepared campsites.

Last year, 1,225 outstanding Michigan high school graduates who entered the University of Michigan were honored as Regents' Alumni Scholars for their superior academic achievement and potential contribution.

## Four CHS Debaters Win Certificates

Four students from Chelsea have been awarded Certificates of Merit by the Detroit Free Press for having distinguished themselves as outstanding debaters.

The students are: Carol Fairbrother, Elizabeth Belser, David Klemmer and Jennifer Lane from Chelsea High school.

The students participated during the 1972-73 season in the Michigan High School Forensic Association debate series, sponsored by the Free Press and the University of Michigan Bureau of School Services.

The topic debated was: "Resolved: That governmental financial support for all public elementary and secondary education should be provided by the federal government."

## Stoney Ridge Riders Finish Season With Many High Winners

Stoney Ridge Farm jump teams finished the season at Oak Ridge Farm, in Highland, with a first place for the day. It was won by The Generation Gap team composed of Rae Sorensen on Sunday Driver, Dottie Sippel on Skyline, Liz Conlin on Tug O'War, and Shelly Spencer on Alley Oop. They were also the Reserve Champions for the winter season, in the C Division.

Individual Reserve Champion for the winter season, C Level, was Kelly Alder riding War Dance. On April 7 and 8, Stoney Ridge Farm riders showed at Centaur Farms in West Bloomfield. The placings were: Patti Wallace on Irish Coffee, 3rd in Green Working Hunter, 4th in Equitation 15-17 over Fences, 5th in Warm Up, 5th in Equitation 15-17 not to jump, and 6th in Green Working Hunter under Saddle.

Sue Gates on Alley Oop; 3rd in Working Hunter over Fences, 4th in Limit Equitation over Fences, and 6th in Intermediate Junior Hunter over Fences. Sue also placed on Evermore Ruler; 2nd in Limit Equitation not to jump, 4th in Intermediate Junior Hunter under Saddle and 4th in Working Hunter under Saddle.

Joy Gillett on Alley Oop received a 5th in Intermediate Junior Hunter over Fences. Kim Alder on Bacardi; 2nd in Equitation 15-17 over Fences, 3rd in Warm Up, 5th in Junior Working Hunter over Fences and 4th in Equitation 15-17 not to jump.

## CONSUMERS' CORNER

### Airline Ticket Costs

The dollars you pay for your airline ticket, where do they go? First thing to be said is that they stretch farther than they do for almost anything else you buy these days. Over the past 10 years the cost of living index has gone up 35 percent. But the air fare index, as measured by yield to airlines, has actually gone down 3 percent. Many individual fares have risen, of course, especially those for short trips. But we're talking average fares for all the 200 million passengers who'll fly U. S. scheduled airlines this year.

The largest single item of expense is employment costs. 39 percent of the price of an airline ticket covers these costs. Next comes depreciation and amortization of aircraft and equipment, taking 13 percent of the ticket price. Fuel and oil accounts for 10 1/2 percent. Taxes and other expenses take 9 1/2 percent. The Federal tax on airline tickets is another 8 percent. Materials, supplies and maintenance cost 7 1/2 percent of the ticket price. Sales commissions and advertising expenses account for another 4 percent. Interest and profit each take 2 1/2 percent. Landing fees charged by airports take another 2 percent. The final 1 1/2 percent of your airlines ticket cost goes for communications and utilities.



SWEET VICTORY IS PAINFUL in the mile Beeman show that the end is as welcome as a winning. The expressions of Bruce Vail, the Dexter man, John's 4:56.6 mile earned second place, who won the event in Monday's meet here, and John

## Personal Notes

Pearlie Patrick spent the Easter week-end in Kentucky after leaving Thursday morning and picking up her sisters Lena Harbor and Laverne Burker in Bellfountain, O. They visited their mother in Royalton, Ky., as well as Phyllis at Gypsy, Ky., Mr. and Mrs. Dave Bailey at Royalton, Ky., Mr. and Mrs. Amos Auxier in Gapville, Ky., Mr. and Mrs. Oakie Shepherd at Gunlock, Ky., Mr. and Mrs. Ray Patrick, and Mr. and Mrs. Oscar Summi who are very ill. They spent two days shopping in Salsville, Ky., and visited the livestock sale in Paintsville, Ky. They also visited the cemetery and placed flowers on the graves of loved ones. On the way home they visited Mrs. Patrick's sister and family.

## Kalamazoo College Sophomore Working At Chelsea Hospital

Most Kalamazoo College sophomores are not at the college during the spring. Instead they are participating in the Career-Service program, part of the college's unique educational plan which features off-campus assignments as well as on-campus academic offerings.

It is understandable, then, that though Jill Kipmiller is a student enrolled in Kalamazoo, she is here in Chelsea this semester working for Chelsea Community Hospital. She is the daughter of Mrs. Joan E. Kipmiller of 11960 Jackson Rd.

Students make their own selection of jobs, rather than being assigned to specific positions.

A collection of the world's rarest stamps would have an estimated value of half a million dollars or more, and yet the entire accumulation would easily fit in a man's wallet.

One of the most tragic diseases of children—and adults—is leukemia. The Foundation conducts research and offers medical aid, counseling and blood for children and adults victims of the United Way of Michigan supported through contributions to local united campaigns, the Foundation conducts research and offers medical aid, counseling and blood for children and adults with leukemia.

## — OFFICIAL NOTICE — MEETING OF THE

## DEXTER TOWNSHIP BOARD

will be held

**TUESDAY, MAY 1, 1973 - 8 p.m.**

at the Township Hall, 6800 Dexter-Pinckney Rd.

### AGENDA:

Discussion of North Lake Farms, II

**WILLIAM EISENBEISER**  
Dexter Township Clerk

CALL OR STOP IN

## CHELSEA GLASS WORKS

WORKMANSHIP AND MATERIALS FULLY GUARANTEED.

Open Daily 8 a.m. to 5 p.m.; Sat., 8 a.m. to 1 p.m.

140 W. Middle, Chelsea

Phone (313) 475-8667

### WE REPAIR AND REPLACE:

- ★ STORE FRONTS
- ★ FURNITURE TOPS
- ★ SHOWER DOORS
- ★ THERMOPANES
- ★ AUTO GLASS - Including Windshields
- ★ MIRRORS
- ★ PATIO DOORS
- ★ TUB ENCLOSURES

Free Pick-up and delivery on auto work.

### Storm Door & Window Reglazing & Screens

COMMERCIAL BUILDINGS OR RESIDENTIAL  
PROMPT SERVICE REASONABLE PRICES

personalized

# MATCHES

with name or initials  
imprinted

48-HOUR SERVICE

When Requested

Yellow - Green - Blue

Reg. \$3.00 Value **\$2.00**  
50 Books

## METALLIC

Gold - Silver - Light Green

Reg. \$3.50 Value **\$2.50**  
50 Books

## NAPKINS

Personalized with  
your name or initials.  
(Makes a nice gift, too!)

100 for \$3.25

Luncheon or Beverage sizes.  
Choice of several colors.

## The Chelsea Standard

300 North Main Street  
PHONE 475-1371

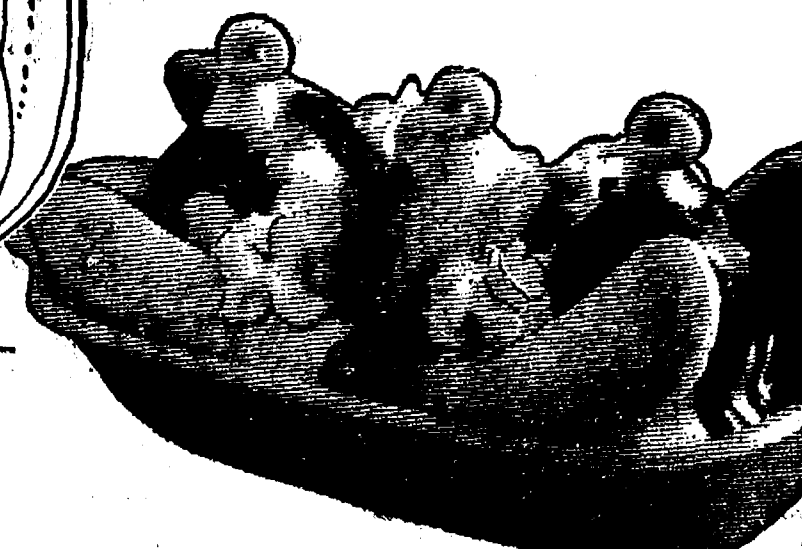
social printing

# Scrumptillyishus! Banana Split Sale 39¢

THERE'S MORE/IN ONE WAY TO SPLIT A BANANA



Save!  
Thurs. and Fri.  
April 26-27



You'll go bananas for this great sale on the famous DAIRY QUEEN® banana split. Two fresh-cut banana slices and America's favorite treat, topped with chocolate, strawberry, pineapple and whipped topping. It's "scrumptillyishus"! Treat the whole gang during this special offer at participating DAIRY QUEEN Stores. It's "scrumptillyishus"!

**Dairy Queen**

\* "Let's all go to the DAIRY QUEEN"

SOUTH MAIN STREET - CHELSEA

\*Reg. U.S. Pat. Off., Am. D.Q. Corp (C) Copyright 1973, AM. D.Q. Corp.

## FOR PROFIT

# FEED

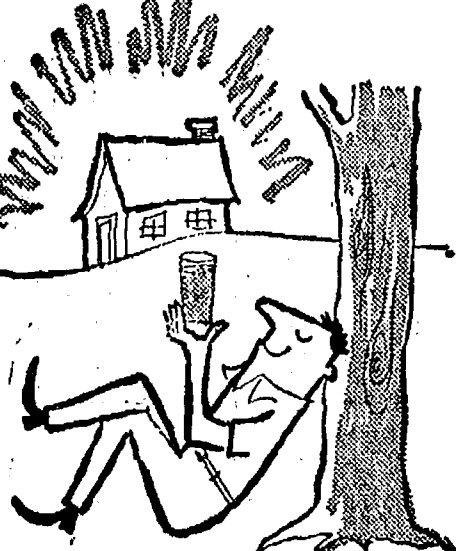
**Profit-Producing Feeds For Livestock, Poultry**

In our complete line of Fortified Feeds, you'll find the right feeds to keep livestock and poultry growing, gaining and producing.

## Farmers' Supply Co.

Phone GR 5-5511

## Do the job in half the time



## with Dutch Boy Latex House Paint

- Excellent color retention.
- Glides on easily.
- No lap marks—stop & start when you please.
- Dries in only one hour.
- 100% pure acrylic latex.
- Protects for years.



**MERKEL BROS.**

Phone 475-8621



## Girl Scouts Registering For Camp

Area Girl Scouts are now registering for resident camping sessions at Camp Linden in Livingston county, according to Mrs. Louis Galan, president of the Huron Valley Girl Scout Council.

Four two-week sessions will be held from June 27 to Aug. 22, with places for 131 girls in each. Enrollment for the only one-week session, June 20-27, is now closed, says Mrs. Galan.

Just as it has for the past 10 years, Camp Linden this year will feature programs tailored for three age groups, Junior Girl Scouts, 4th to 8th graders; Cadettes, 7th to 9th graders; and Seniors, high school age. Although all programs are girl-directed with the girls themselves deciding how they will spend their time, special opportunities are presented to each group.

Junior Girl Scouts may elect a broad program featuring swimming, boating, hiking, bicycling, and cook-outs, as well as short term projects in crafts and other skills.

In a Wider Opportunities program, Cadette Scouts can frame more complicated projects such as taking overnight bicycle or canoe trips from Louis Lake to Twin Lakes and Green Lake, all within Camp Linden's 430 acres.

Some Cadettes elect to pursue major ecology projects such as correcting drainage problems or reforestation. Subjects as diverse as drama and building tree houses may be pursued in depth.

Both Junior and Cadette campers always have the option of not participating in group projects. "For many just the experience of getting away from home and city life to enjoy the out-of-doors, is all they ask or need of camp," Mrs. Galan says.

Senior Girl Scouts attend Camp Linden as aides, assisting camp counselors in areas of special interest, such as water sports, outdoor activities, or crafts, writing, music, and other Girl Scout program areas.

All campers sleep in four-man tents mounted on platforms, unless they elect to go primitive camping in round-up tents that are erected on bare ground and sleep two.

Fees for the two-week camp sessions are \$60 for all ages. Camper scholarships are available. Registration and campership application forms are now available from Huron Valley Girl Scout Council, 19 N. Hamilton St., Ypsilanti 48197 or phone 483-2870.

**FUTURE POWER**  
By the year 2,000, 75 percent of the total energy consumed in the United States and half of the electric power will still come from whatever fossil fuel reserves have not been exhausted.

## Soil Conservation District Plans Tree Distribution

Lloyd Braun, of the Washtenaw County Soil Conservation District Board of Directors has announced that the Soil Conservation District will hold its annual "Tree and Shrub Distribution Day" on Saturday, April 28. The event will take place from 8 a.m. to 4 p.m. at the Farm Council Grounds on Ann Arbor-Saline Rd.

All persons who have placed an order for tree and shrub seedlings will receive their planting stock at that time. According to Braun, about 750 persons have ordered seedlings this spring.

The April 28 date set for "Tree Day" by the Washtenaw County Soil Conservation District this year also marks the conclusion of Arbor Week and Keep America Beautiful Day, both of which are recognized as National events.

## What's Cooking In Michigan

By Larrestine Trimm  
Michigan Dept. of Agriculture  
Marketing Information Specialist

Bedding plants will appear on the market in increasing numbers in weeks to come. You'll find annual flower and vegetable plants in garden centers and supermarkets a refreshing change of pace from your usual shopping.

Michigan produces 10 percent of all bedding plants grown in the United States, according to Michigan Department of Agriculture officials, and is tied with California for first place among the states in total production.

Plants are grown from seed in greenhouses during January and February, then transplanted to flats and grown under cover until the beginning of the selling period in April. Flowers account for nearly 85 percent of bedding plant sales; vegetables, about 15 percent.

Michigan's three largest production centers for bedding plants are the Kalamazoo-Calhoun county area, Detroit's tri-county area and the Ottawa-Muskegon area. Some 300 growers produce an estimated three million flats. Petunias, most in demand, account for almost half of all bedding plants produced by the industry. Other common varieties are alyssum, begonia, coleus, impatiens, pansy, marigold, salvia, vinca and zinnia. Seed-type geraniums are also sold as bedding plants.

Bedding plants make colorful displays on lawns and in patio flower boxes. They're always attractive as edging for shrubbery and walks. Also available are flats of young cabbages, green peppers, onion set tomatoes and other vegetables which give home gardeners a head start each spring.



**NATIONAL CHERRY QUEEN** Trudy Yarnell of Battle Creek samples a forkful of Michigan cherry pie dished up by U. S. Senator Robert P. Griffin. Through Griffin's efforts, cherry pie was served in the Senator's dining room during the recent Cherry Blossom festival in the Nation's Capital. Trudy, who doubled as Michigan's Cherry Princess in the Cherry Blossom Festival was chosen Miss Congeniality by participants from other states. The daughter of Mr. and Mrs. William Yarnell of Battle Creek, Trudy is a senior at Central Michigan University.

## Major Social Problems Traced to Family Trouble

Michigan's major social problem is family trouble. All the other social ills either flow from family trouble or bear a direct relationship to it.

That is the belief of Phyllis Cornell, an executive with the state's largest voluntary agency dealing with family and individual problems.

Miss Cornell is director of services for Child and Family Services of Michigan (CFSM). From its headquarters in Farmington and 17 branches throughout the state, CFSM handles more than 10,000 cases involving troubled families each year. The office serving this region is in Ann Arbor.

CFSM, a member agency of the United Way of Michigan, is supported by donations to Chelsea Community Chest.

In addition to the family problems, CFSM handles problem pregnancies, adoptions and foster child-parent cases.

Nearly 2,000 children were in the care of CFSM during 1972. Of these 1,109 were placed, 835 through adoptions.

The agency handled 2,166 problem pregnancy cases from around the state. Of these, 2,061 involved unmarried parents and 105 married parents.

CFSM also placed 870 children in 316 foster homes and recruited 118 new foster homes for the program.

"Just about all of our work results from family troubles," says Miss Cornell, "and most family troubles result from an inability to cope with the stresses of life."

She agrees that there is more disruption in family life these days and attributes it to five basic reasons:

1. Increased mobility. "People get around a lot more than they did even a few years ago. They don't live and die on the same block—or city—any more."

2. Changing moral standards. "Infidelity, or cheating, is now condoned in many quarters."

3. A more complex world. "It just gets tougher for everybody to cope every day. These stresses operate in the home."

4. Less emphasis on religion. "Not as many people look upon the church as the central influence in their lives."

5. More alternatives. "This is particularly true of women. A generation ago, women didn't have the freedom to choose alternatives to marriage. They do now. Consequently, there is an entire culture developing for the formerly

married and it is recognized and accepted."

Miss Cornell feels that CFSM, and other similar agencies, are striking directly at the heart of social ills by helping families.

"If you cure a family ailment, it follows that all of that family will be helped."

While she believes there are more family problems these days, Miss Cornell feels that the difference isn't as great as it appears to be. This is because problems are being identified quicker and more accurately today.

"And that's a good thing," she said. "As in many health problems, early diagnosis and treatment can be the difference between life and death for a marriage. That's one reason our agency and others are so important. If people know we're here and want to help, they will come to us."

Miss Cornell is a social worker as are 147 others on the CFSM staff of 195. In her 15 years of service, she has worked on thousands of family problems. Is the most critical one money? Or children? Sexual incompatibility? Alcohol?

"None of those," she says. "It's poor communication. And that doesn't just mean verbal communication. Sometimes there's too much of that."

"Communication has to be least partly, maybe mainly, verbal, but it is really understanding, an awareness of needs and desires. It is openness to new ideas, new feelings; a willingness to adapt. 'Receiving messages is an important as sending them in any communication system. Married partners should listen carefully; be sensitive to each other's wants and sympathize.'"

Miss Cornell emphasizes the danger of generalizing about problems and at CFSM there are no generalities. Each case is researched, studied and worked over with great care. There are so many things to be considered in family troubles that CFSM does not look for quick or easy solutions, she said.

"There's no such thing as 'the same old story' at Child and Family Services of Michigan," said Miss Cornell. "Even if the problem is familiar, we realize that the people are entirely different. So, even to us, it's an entirely new situation every time."

However, as hard as they work at CFSM and as skillful as they may be, Miss Cornell knows that they can never be 100 percent successful.

## The Safety Value

**Question:** Quite often in this country you refer to the Michigan Vehicle Code. What is it?  
R. M. R., Freejap.

**Answer:** Excellent point! We get so involved and accustomed to the bible of our trade that we tend to overlook the point that everyone doesn't have that vested interest. So here goes. The Michigan Vehicle Code is

"An act to provide for the registration, titling, sale and transfer, and regulation of vehicles operated upon the public highways of this state; to provide for the licensing of vehicle dealers and wreckers; to provide for the examination, licensing and control of operators and chauffeurs; to provide for the giving of proof of financial responsibility and security by owners and operators of vehicles; to provide for the imposition, levy and collection of specific taxes on vehicles, and the levy and collection of sales and use taxes, license fees and permit fees; to provide for the regulation and use of streets and highways; to provide penalties for violation of any of the provisions of this act; to provide for civil liability of owners and operators of vehicles and service of process on nonresidents; and to repeal all other acts or parts of acts inconsistent herewith or contrary hereto."

**Question:** What are some of the behavioral symptoms a law enforcement officer observes and considers in judging whether to arrest a driver for being under the influence of liquor? C. O. S., Midland.

**Answer:** Generally a police officer's attention is attracted by some type of erratic or unusual manner of driving. If, when the vehicle is stopped, the driver appears to be under the influence, i.e., slurred speech, fumbling fingers, etc., the officer should after observing and considering all factors arrest for Driving Under the Influence of Liquor.

The law provides that anyone who operates a vehicle upon the public highways of this state is deemed to have given consent to chemical tests of his blood, breath, or urine for the purposes of determining alcoholic content.

**Question:** Why are so many people arrested for driving under the influence of liquor or drunk and disorderly conduct, but not given a test? C. O. S., Midland.

**Answer:** The law provides that when arrested for DUI or Driving While Intoxicated a person may refuse a chemical test. However, this means the person's license may be suspended for up to two years, in addition to any penalty which may be incurred for conviction of the original offense.

**Question:** What are some of the behavioral symptoms a law enforcement officer observes and considers in judging whether to arrest a driver for being under the influence of liquor? C. O. S., Midland.

**Answer:** Generally a police officer's attention is attracted by some type of erratic or unusual manner of driving. If, when the vehicle is stopped, the driver appears to be under the influence, i.e., slurred speech, fumbling fingers, etc., the officer should after observing and considering all factors arrest for Driving Under the Influence of Liquor.

The law provides that anyone who operates a vehicle upon the public highways of this state is deemed to have given consent to chemical tests of his blood, breath, or urine for the purposes of determining alcoholic content.

## GOP Leaders Will Gather for Legislative Dinner

An impressive array of prominent Michigan political leaders will gather in Lansing on May 16 to attend the Michigan Republican Party's annual Legislative Dinner.

Among dignitaries planning to be on hand for the event are Governor William G. Milliken, United States Senator Robert Griffin, Lieutenant Governor James Brickley, Senate Majority Leader Robert Vanderlaan, Senate Assistant Majority Leader Gilbert E. Bursley of Ann Arbor, and Republican members of the Michigan State Senate and House of Representatives.

Guest speaker for the state GOP's most prestigious function of the year will be Senator Charles H. Percy of Illinois. Senator Percy, former Bell & Howell Corp. board chairman and a prospective presidential candidate in 1976, is one of Washington's most prominent political figures.

The Legislative Dinner will be held at the Lansing Civic Center, Wednesday, May 16. Cocktails will be served beginning at 6:30 p.m. Dinner is scheduled to begin at 7:30.

**CALIFORNIA CARS**  
California leads the nation in new vehicle registration with nearly 938,000 passenger cars and 200,000 trucks.

## Thought For Food

In an age when power counts, nutritionally-conscious consumers are beginning to turn to those protein foods that can give them the needed nutrients for fast-paced modern day living. Peanuts are loaded with protein power.

Peanuts have been called "Nature's Masterpiece of Food Values" and no wonder. Besides carrying 26 protein grams, peanuts contain many of the essential B vitamins (Thiamin, Riboflavin, Niacin), fats — the polyunsaturated kind — and carry a balanced share of calories. The balance is an important thing to remember. Calories properly balanced with energy-giving proteins are not only good for you, they are essential.

Those who worry about their weight should not fret about eating peanuts because they create quick energy. This abundant energy burns up the calories and builds muscle. Appreciable amounts of calcium, phosphorus, potassium, iron and magnesium also are found in peanuts.

For a firm figure, for loads of energy, and for good health, consumers can count on peanuts and peanut products.

## Dairymen Turn To Off-Farm Jobs

Nearly one-third of Michigan's fluid milk dairymen and their wives work a few days or full-time off the farm, according to a recent Michigan State University dairy employment study.

The highest percentage of dairymen who work off the farm 100 or more days a year are those with gross annual sales less than \$10,000. Only five percent of dairymen with gross sales of \$40,000 or more spend 100 or more days in off-farm employment.

MSU Dairy Economist Ray Hoglund cites the need for increased income as the major reason for off-farm jobs. Farm income of less than \$20,000 annual gross sales usually is not adequate for family living, education and debt retirement expenses. Many sons work off the farm to build savings for future farm partnerships, Hoglund adds.

About eight percent of dairymen in the \$20,000 to \$40,000 gross sales bracket report off-farm employment of 100 or more days. The percentage of wives with off-farm jobs is nearly the same as their husbands.

## If you love horses, you'll love Pine Ridge Country Estates Florida's newest Mackle-planned community

Now you can saddle up and hit the trail from your own little "ranch" in the heart of Florida's lush, beautiful country. Where? At new Pine Ridge Country Estates, a totally planned community, created by The Deltona Corporation. The Mackle brothers, renowned Florida builders, have masterplanned the community for shops, recreational center, golf course and country club (for horse lovers area, stables, tack room, show ring, 28 miles of equestrian trails). Homesites are generous in size — from one (1) to five and one half (5 1/2) acres. There's nothing like Pine Ridge Country Estates in all Florida. Get full information now — just phone or fill out coupon below.



**FLORIDA'S MACKLE BROS. INC.**

2306 WEST STADIUM BOULEVARD  
ANN ARBOR, MICHIGAN 48103  
769-0580 — 769-0541  
I would like full information on new Pine Ridge Country Estates without obligation.

Mr. \_\_\_\_\_  
Mrs. \_\_\_\_\_  
Miss \_\_\_\_\_  
Address \_\_\_\_\_  
City \_\_\_\_\_  
State \_\_\_\_\_ Zip \_\_\_\_\_

## The Farmer's Best Friend

D. R. ELWART, D.C.

The modern day farmer is exposed to more causes of serious illnesses than ever before. Through every part of the farmer's day he is constantly exposed to causes for aches, pains, stresses, headaches, and many other symptoms. Most of the causes of these serious, disabling ailments can be corrected by your family chiropractor. AN UNHEALTHY FARMER IS A POOR FARMER, since illness and disease prevent him from his everyday productivity. Have you ever stopped to think of the hundreds of ways each day that a farmer subjects himself to the possibility of serious disorders. How many times each day does he scoop feed, stoop to milk cows, fall or slip from machinery, carry heavy sacks, stoop to pick up heavy equipment, stretch to reach tools in the barn, twist his neck while driving the tractor, strain his back from heavy lifting, or by being pushed and jolted by livestock and bumping up and down on tractor seats all day long?

High speed and long working hours, taut nerves and incidents like those described above, result in weakening muscles to such an extent that the whole skeletal framework sags, causing nerve pressure and the usual train of symptoms — headaches, insomnia, stiffness of the neck, numbness and pain in the arms and hands, pain between the shoulders, pain in the lower back, swollen joints, and numbness and pain in the legs. Heavy lifting often produces nerve interference, cutting off the VITAL supply line from the brain to tissue cells.

CONSULT YOUR FAMILY CHIROPRACTOR . . . Your family chiropractor is the man to have confidence in for results. Chiropractic adjustments through expert spinal analysis can mean the difference between good health and disease. Your family chiropractor should be consulted now! Gentle spinal adjustments can correct these conditions quickly and effectively. REGARDLESS OF THE HEALTH PROBLEM . . . you or any member of your family may have, it is entirely possible that your family chiropractor can replace despair and sorrow with glowing health and happiness.

SEE YOU SOON

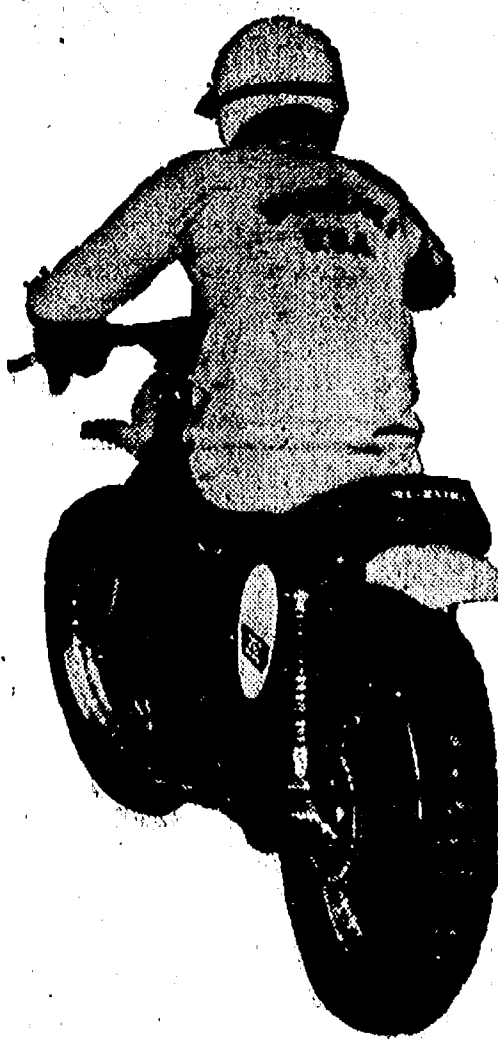
HOURS: Mon., Wed., Fri., 9-12, 2-5, 6-3; Sat., 9-12.  
CLOSED TUES., THURS., SUN.

**CHIROPRACTIC FOR LIFE**  
CHIROPRACTIC CENTER

7970 CLARK LAKE RD. CHELSEA, MICH. 475-7633

We're across the road from Clark Lake on M-52, 1/2 mile north of Waterloo Rd.

IF LOST, 475-7633



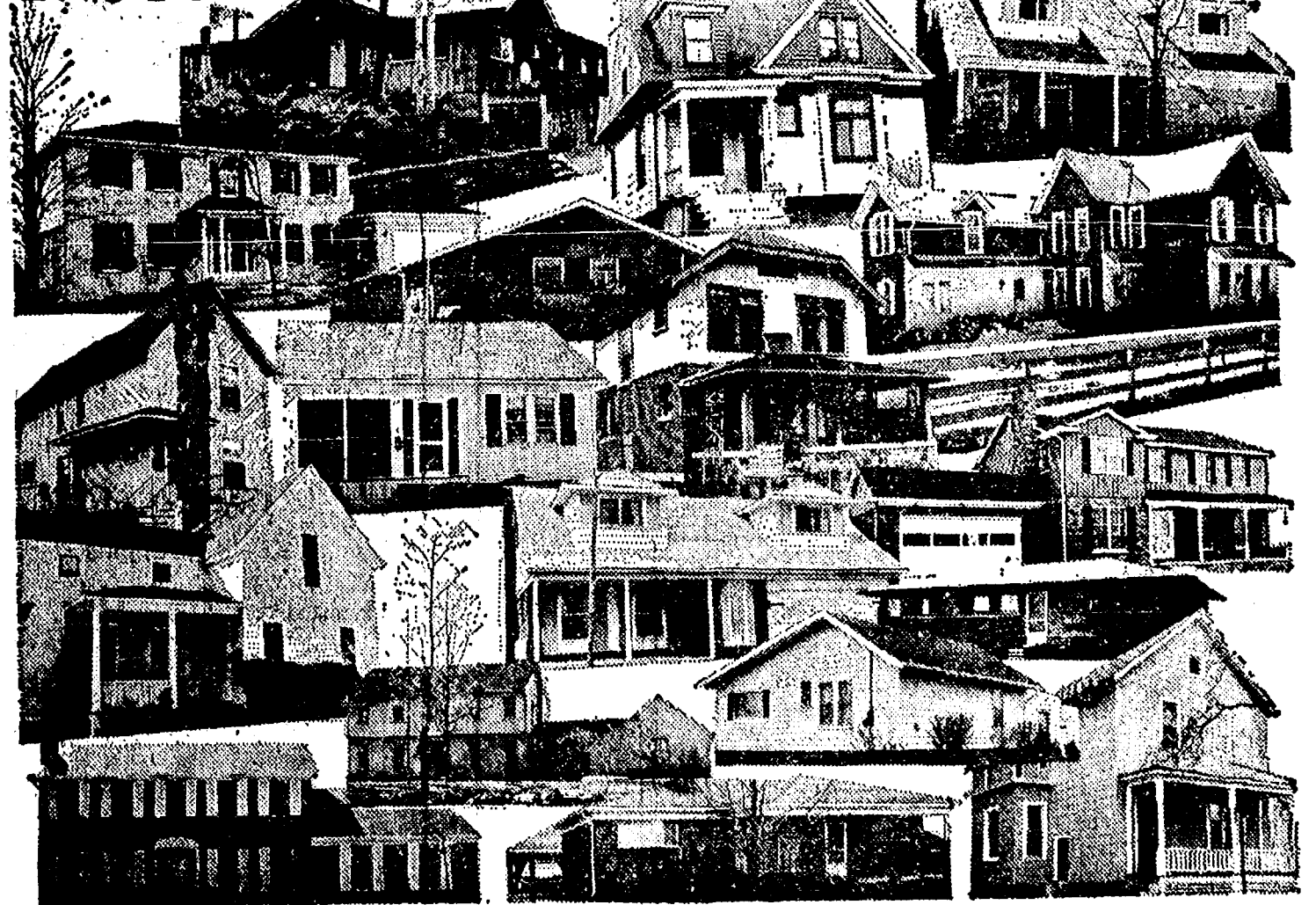
If you aren't driving Suzuki, this is probably the only view of one you've seen.

Why not visit us and see the whole thing. Washtenaw near Carpenter - right next to the Texaco station.

**SUZUKI-ANN ARBOR**

4040 WASHTENAW NEAR US-23 (313) 971-4210

## There are over 60,000 houses in Washtenaw County. About 600 of them are for sale.



Close-to-campus-and-downtown bungalows. Subdivision split-levels. Country-gentleman estates. It's a pretty big and diversified market to compete in.

If you're planning to enter your home in the competition, see your Realtor.

Realtors know the marketplace. Your Realtor knows what properties comparable to yours are selling for, and he can help you establish a selling price which will return the maximum value for your home and yet be attractive to prospective purchasers.

Also, he knows which of his clients are looking for a home like yours, and which can meet your selling terms. When he brings prospective purchasers to see your home (at your convenience, of course), they really are potential purchasers.

Finally, your Realtor participates in a multiple listing service, which means that you'll have 300 salesmen working for you. They're all pros at the business. . . and their record is impressive.

See a Realtor.  
The professional who displays this seal.







IT'S DIFFICULT TO TELL whether it's the kids or the parents who get more involved in the Easter Egg Hunt at the high school each year. This little participant is getting a helping hand from his mother. The Jaycees once again arranged for the Easter Bunny to leave his eggs for Chelsea's younger set. The hunt, well-attended as usual, went as planned at 11 a.m.

## Beach Track Team Defeats Tecumseh in Season Opener

Beach junior high track team opened its season not only with a win, but with a new look. Among the ranks of lithe young men are four fast young women, Sue Frisbie, Leigh Hafer, Kathy Treado and Carolyn Schardein.

They are the hearty remnant of a corps of 10 or 12 girls who went out for track this year, now that recent court cases have opened non-contact sports to women. Tecumseh, who also sports 16 squaws among the braves, lost the opener, 73 1/2 to 53 1/2. While taking more firsts than Chelsea on the strength of three outstanding men, the Indians fell to the depth of Chelsea's field.

One of two heroes of the day was Mark Smyth who took firsts in both the 100-yard dash with a :11.9 time, and the shot put. The winning toss was 41'11". Randy Sweeney earned laurels for breaking the school record in the high jump. He cleared 5'7" which smashed Rick Slane's 1966 record of 5'2".

The turning point in the meet was the 880-yard run. As the runners prepared for the gun, the teams were tied. The deadlock was sprung when Chelsea men, Dean Thompson, Todd Weber and Dave Dawson swept all three places. Dean's first-place time was 2:24.6 while Todd came in less than a second later at 2:25. Dave took third with 2:26.

Shortly thereafter, Mark Smyth, John Toon and Jerry Armstrong sewed up the competition by bagging three places in the 100-yard dash. Smyth's winning time of :11.9 was followed by Toon's :12 flat and Armstrong's :12.3.

Chelsea took firsts in both relay events with Jerry Armstrong, Richard King, Joe Branham and Barry Hagen recording a 1:50 in the 880 and Mike Check, Dan Cobb, Dave Hendricks and John Toon covering 440 yards in :55.8. Coach Pat Clark dubbed that time "excellent for anytime of year."

A third relay, an exhibition event for the girls, was also taken by Chelsea athletes. Chelsea's four females broke the wire at 57 seconds flat, after covering 440 yards. The coach considers that a fairly

good showing considering the girls had never before run together.

Anthony Houle was the only other first-place runner for Chelsea. A time of :9.6 earned him the first in the 60-yard high hurdles.

Chuck Minix earned a third place in the shot put, following Smyth's toss, with a 38'5" throw of his own. Matt Heydlauff was awarded a second place for his 8' pole vault. Both second and third places were Chelsea's in the long jump with Anthony Houle taking the second best slot with a leap of 16'4", Barry Hagen was third with 15'7" behind him.

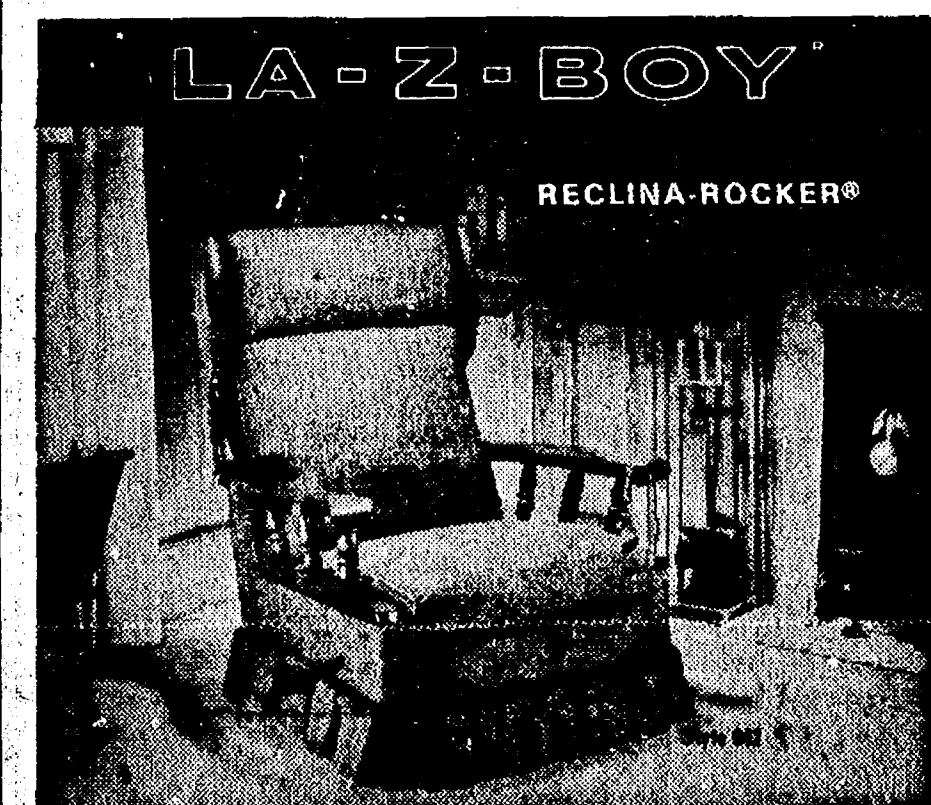
The 60-yard dash was another event that saw Chelsea men in both the second and third places. Mark Houle, with a :7.6 time, took second while three Bulldogs, Dave Hendricks, Mike Check and Sue Frisbie, earned third with a time of :7.7. Second and third places were also Chelsea's in the 75-yard dash in which Mark Smyth's :9.2 and Barry Hagen's :9.5 took the honors. The same situation occurred in the 440-yard run. Tony Roberts was second with a time of :60.7, and Jeff Peterson was third with :61.8. Morris Johnson also clocked a good time, :62.4, in this event, but no points were given for the fourth place he earned.

Rick Davis ran the mile in the best time of his life, 5:34.8, but that was only worth a fourth place in the field. Rick Haller's 5:32.9 was the third-place time and Chelsea's George Menge took second with a time of 5:31.

Although Tecumseh took first in the 220, Chelsea again was seen in the other two places. Mark Houle was second with :27.3 and Matt Heydlauff was third with :28.1.

Before the Pinckney meet, Wednesday, Coach Clark was unwilling to put a label on the team's potential. "If we make it past Pinckney," he said, "I'll say we have a good team."

Next Wednesday Chelsea faces Dexter at a home meet.



This chair is destined to be sought after by every member of your family. The generous proportions are enhanced by the burnished dark pine finish of the wood accents. It is fully reclining. It's the rocker that doesn't look like a rocker. La-Z-Boy's exclusive Comfort Selector's three-position

leg-rest can be easily adjusted with or without reclining the chair. This gracious styling is certain to add charm and warmth to your home. A selection can be made from hundreds of attractive decorator colors and fabrics, most of them treated with Scotchgard fabric protectors.



**Merkel Home Furnishings**

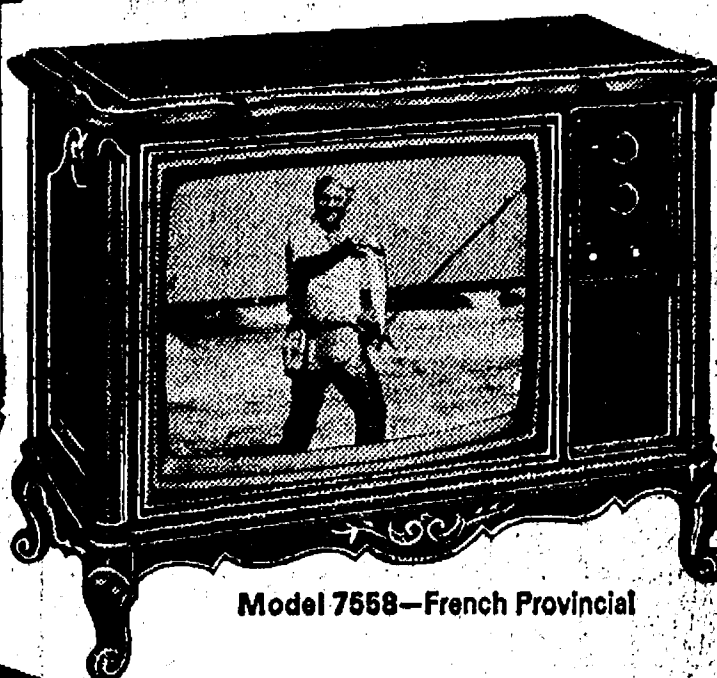
Open Mon. & Fri. Until 9

Ph. 475-8621

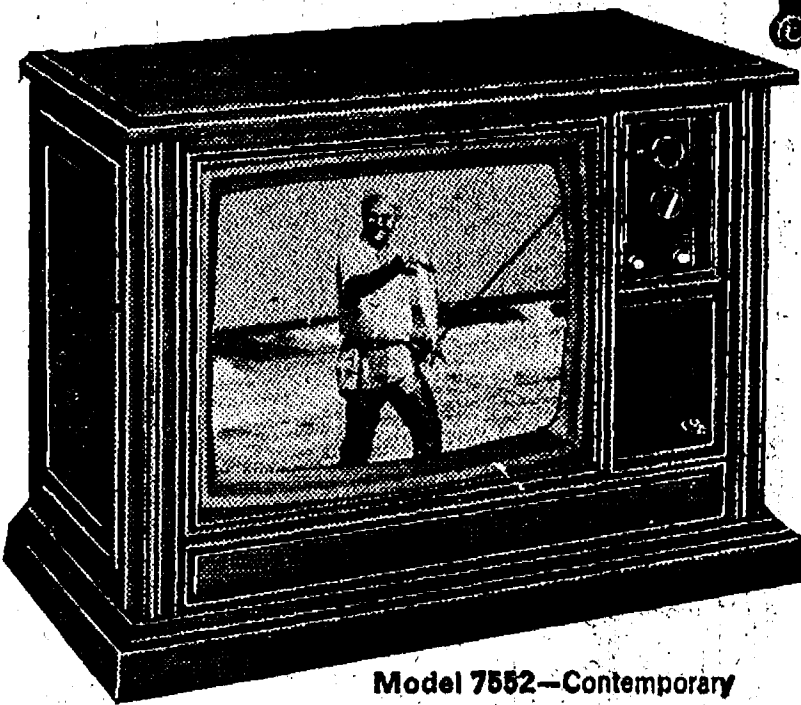
# Magnavox "Haul in a Big One" Days!



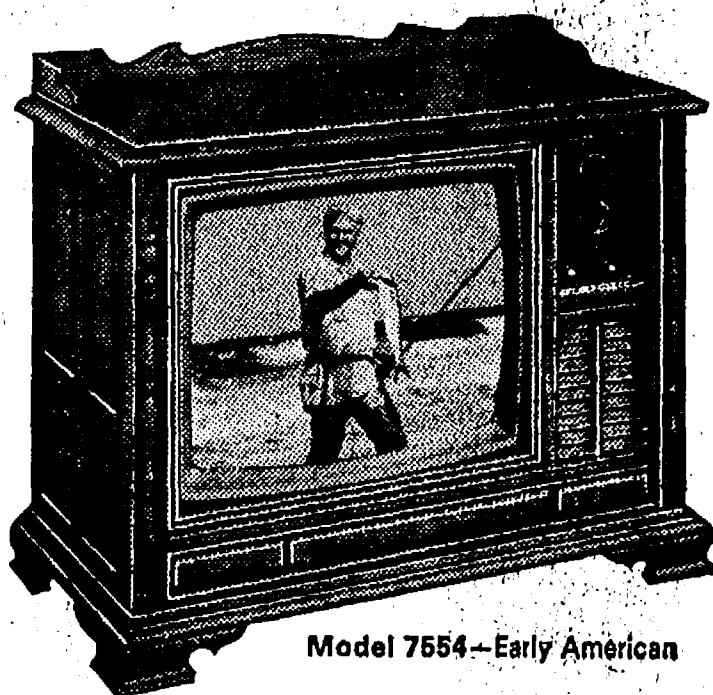
Model 7560—Italian Provincial



Model 7558—French Provincial



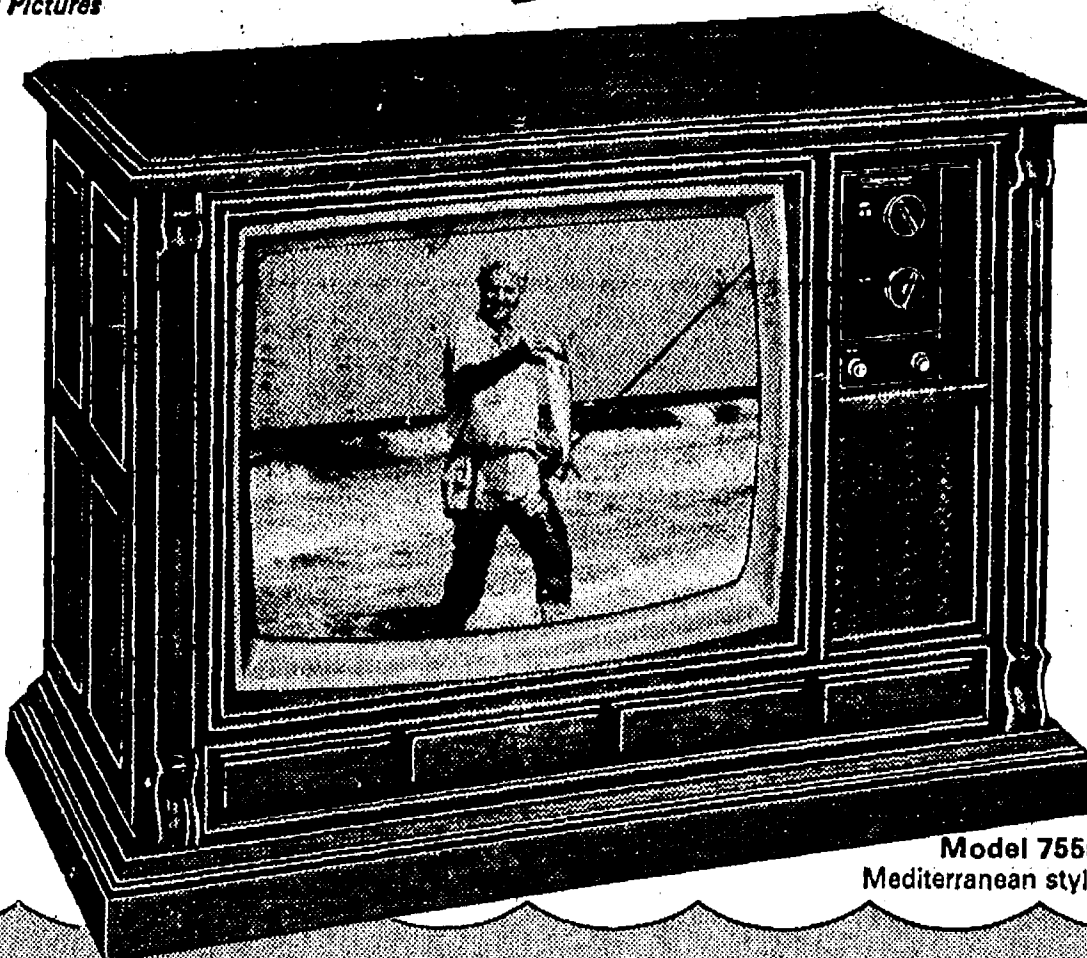
Model 7552—Contemporary



Model 7554—Early American

Simulated TV Pictures

With the Magnavox Total Automatic Color System you get perfectly-tuned, color-right pictures with natural flesh tones... automatically—when the scene changes... or when you switch channels. And, these "prize catches" also have a Matrix Picture Tube for clear, sharp, brilliant color pictures... and the SS-85 predominantly solid-state chassis for great reliability! In addition to these outstanding features for your viewing enjoyment, each model also offers fine furniture craftsmanship with authentic styling... to add beauty to your home!



Model 7556—Mediterranean styling

**WIN  
\$1,000  
EVERY SPRING FOR LIFE  
OR  
\$20,000  
CASH**

... OR ONE OF 1,075 OTHER PRIZES... with a total retail value of over \$20,000! Yes, besides giving away \$1,000 every Spring for the life of some lucky person (or \$20,000 in cash)... Magnavox will be giving away 15 deluxe 25" diagonal Color TV consoles, 25 complete stereo component systems, 35 black and white portable TV's and 1,000 portable radios! Come in today for your official entry blank and complete rules (no purchase is necessary)... or write for the official entry blank and rules to Magnavox "Haul in A Big One" Sweepstakes, P. O. Box 532, New Canaan, Connecticut 06840.

**25" Total  
diagonal  
Automatic  
Color consoles  
Your Choice  
\$549.00**

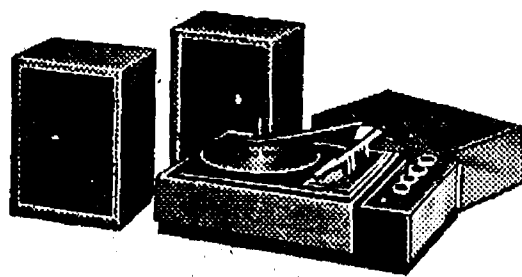
### Portable TV with cart

Model 5052, with 19" diagonal screen, has a predominantly solid-state chassis for great reliability and ease of serviceability! In addition, it has 70 Detent UHF Tuning, Keyed AGC, plus telescoping antenna. Simulated TV Picture.



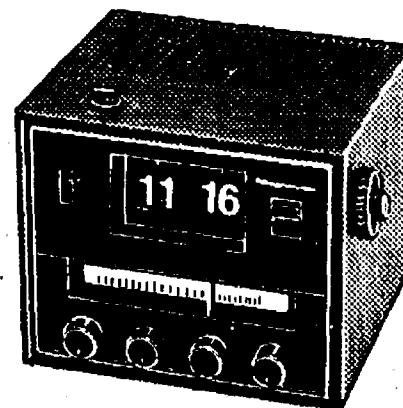
### Stereo Phono Music System

Compact in size, small in price—model 9280 is big in performance—offering great Magnavox sound. It includes an automatic 4-speed Micro Changer, two 6" speakers, even a jack for optional headphones.



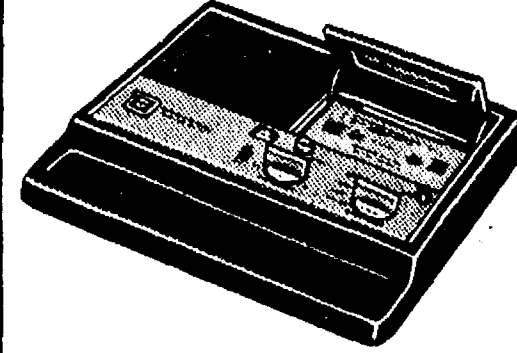
### FM/AM Digital Clock Radio

Model 1782 is complete with private listening earphone. It includes illuminated flip digital clock, slide rule dial, plus a 3-hour Slumber Switch and 24-Hour Alarm set, too!



### Portable Cassette Tape Recorder

AC/DC model 9029 offers superb recording and playback functions with such quality functions as Cassette Eject button, Record Monitor and Battery Meter. Complete with batteries and a blank cassette. Take it anywhere!



# HEYDLAUFF'S

113 NORTH MAIN ST., CHELSEA

PHONE 475-1221